

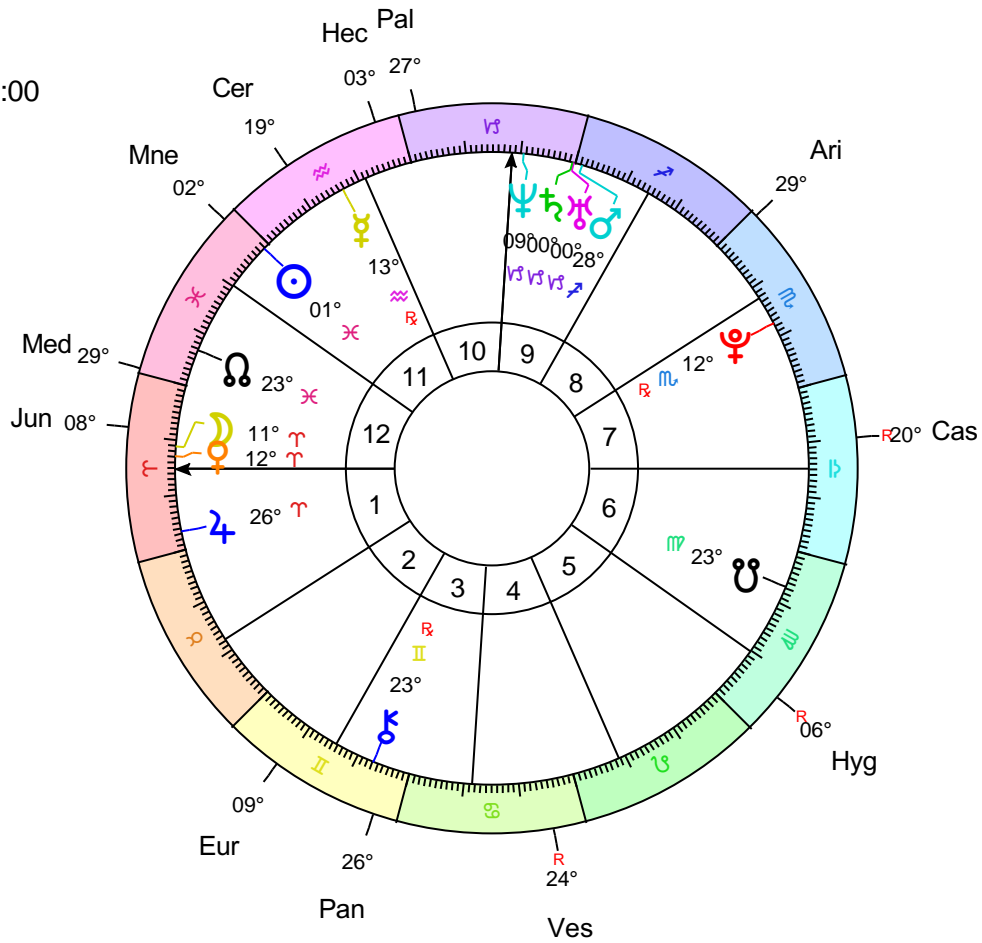
Inner Goddess Report for Rihanna

*Compliments of
Stella Starwoman*

www.stellastarwoman.com
stella@stellastarwoman.com

Stella
Starwoman

Rihanna
Natal Chart
 20 Feb 1988
 8:50 am AST +4:00
 Bridgetown
 13°N06'
 059°W37'
Tropical
Placidus



Key

Abbr	Asteroid
Cer	Ceres
Pal	Pallas Athena
Jun	Juno
Ves	Vesta
Hyg	Hygieia
Ari	Ariadne
Eur	Europa

Abbr	Asteroid
Pan	Pandora
Mne	Mnemosyne
Hec	Hecate
Cas	Cassandra
Med	Medea

Astrological Summary

Chart Point Positions: Rihanna

Abbr	Asteroid	Sign	Position	House	Comment
Cer	Ceres	Aquarius	19°Aq15'	11th	
Pal	Pallas Athena	Capricorn	27°Cp15'	10th	
Jun	Juno	Aries	8°Ar37'	12th	
Ves	Vesta	Cancer	24°Cn50'	4th	
Hyg	Hygieia	Virgo	6°Vi24'	5th	
Ari	Ariadne	Scorpio	29°Sc01'	8th	
Eur	Europa	Gemini	9°Ge05'	2nd	
Pan	Pandora	Gemini	26°Ge12'	3rd	
Mne	Mnemosyne	Pisces	2°Pi08'	11th	
Hec	Hecate	Aquarius	3°Aq46'	10th	
Cas	Cassandra	Libra	20°Li03'	7th	
Med	Medea	Pisces	29°Pi12'	12th	

Introduction



The Goddess is the custodian of life's mysteries and the primal world of archetypal forces. As representative of the world soul she engages us in the sacred rites of nature and reanimates life through the cycles of birth and death. Goddess culture flourished in the prehistoric period when magical consciousness prevailed, supernatural forces were deified and natural forces were revered. As consciousness developed through its phases the wisdom of the goddess was buried beneath the rational constructs of a scientific knowledge that erased the mysteries from life and excluded the magical processes.

With the advent of the asteroids the wisdom of the goddess is once again available to consciousness. Goddess wisdom reveals in the ancient wisdom of cycles, the intelligence of the inner life, the sanctity of divination, the mystery of healing and the necessity for sacrifice and ritual. The ancient feminine wisdom of the goddesses embraced all phases of life, celebrated its mysteries, ritualized its passages and knew the power of the natural world. The Solar Writer - Goddess report celebrates twelve goddesses and heroines and seeks their wisdom and guidance.

The maxim 'as above, so below' underpins the philosophy of astrology. Inner and outer lives are woven together through investing the celestial sphere with meaning. Therefore when astronomical discoveries are made astrologers find new meaning and revelation in them. Astrological tradition suggests that with the major discovery of a planet the collective is confronted with the conscious awakening of an archetypal force that may have previously lain dormant or been repressed. As the 19th century dawned a discovery of a small planet would be made, heralding the reawakening of feminine power and the wisdom of the Goddess.

Late in the 16th century Johannes Kepler first suggested that there might be a planet between the orbit of Mars and Jupiter. Nearly two centuries later the publication of Bode's Law reiterated this possibility. Based on the theory that all the planets were in a harmonic distance from the Sun the law suggested there should be a planet orbiting between Mars and Jupiter. When Uranus was discovered in 1781 its distance from the Sun conformed to the law giving greater weight to the theory of the missing planet. Finally on New Year's Eve 1800 a Sicilian astronomer spotted a new body in the region and named it Ceres after the patron goddess of his homeland. To the Sicilians Ceres favored their island and it was here they claimed Hades abducted her daughter.

One year later its orbit was confirmed and although small in comparison to the other planets the missing planet had become visible. But early in 1802 another body was sighted between Mars and Jupiter and named Pallas Athena. Astronomers wondered if a planet had exploded in this region and therefore more would be discovered. And they were. More than four hundred of these small planets had been named as the

19th Century drew to a close.

It was not until the early 1970's as the woman's movement began to accelerate that astrologers began to take note of the significance of these new bodies, which were named asteroids. In 1973 an ephemeris of the first four discoveries was printed and the astrological community began to experiment with these new archetypes. The first four asteroids were named after the Olympian goddesses who had been previously unnamed in the astrological planetary pantheon: Ceres, Juno and Vesta were the three sisters of Jupiter while Pallas Athena was his daughter. All four were prominent in Greek myth and their cults predated their male counterparts. Previously in the astrological pantheon only the Moon and Venus were available to represent the lineage of the feminine traditions. Renewed images of the feminine had now appeared in the astrological tapestry. As astrologers began using these potent images of the asteroids the cults of the ancient goddesses were rediscovered, paralleling the cultural reclamation of feminine power. With the discovery of the asteroids and their use in astrology the ancient feminine wisdom of the goddess was brought to consciousness.

Each goddess in your personal Solar Writer - Goddess report has a specific function, being emblematic of an important sphere of your life. Every one embodies a different aspect of the Goddess herself. However, all twelve are involved in the handiwork of the Goddess. Therefore underlying each individual goddess is the sanctity of being, the awareness of the seasonal cycles of our life cycle and the acceptance of inner intelligence, signs, symbols and dreams. All twelve honor the instinctual wisdom of nature and follow her guidance.

These twelve goddesses preside over the three spheres of Heaven, the Earth and the Underworld. Being Olympians the goddess Ceres, Pallas Athena, Juno and Vesta are the goddesses of heaven who oversee the important initiations and transitions of the life cycle. These four goddesses were also the first named asteroids and the ones most frequently referred to in contemporary astrological literature. They personify four potent feminine functions or orientations to life. The goddesses of the underworld are powerfully insightful and understand the deep waters of the unconscious, the complexity of feelings, the power of mystery and magic and the uncertainty of life. These goddesses may reveal themselves through a healing crisis, the psychic senses, loss, betrayal or a myriad of other mysteries that arise in our lives. Hygieia, Cassandra, Hecate and Medea are the four goddesses who plunge the depths of the unconscious realm. Finally the goddesses who rule the Earth symbolize our worldly concerns and attitudes. Ariadne, Europa, Pandora and Mnemosyne are the influential representatives in the world who watch over our loves and labors, as well as our trials and triumphs.

The Solar Writer - Goddess report is a celebration of twelve of the numerous asteroids. Below the asteroid goddesses and heroines have been listed by their order of discovery. Each asteroid has its unique cycle and position in the horoscope. Keywords are listed below to introduce you to the meaning of each goddess as well as other astrological correlations that have a similar essence to the asteroid archetype. Each goddess will be explored through her myth and cult to appreciate her ancient role and contemporary meaning. The oracular meaning of the asteroid goddesses and heroines is based on the individual cult of the goddess. Once familiar with the presence of each goddess or heroine we will petition them for an oracle based on their position by sign and house in your horoscope.

Ceres, Asteroid No 1, was discovered in 1801. Ceres is closely aligned with the archetypes of Pluto and the Moon and especially strong when the Moon aspects Pluto. Her process may enter our lives when Pluto transits the Moon or the 4th house.

Pallas Athena, Asteroid No. 2, was discovered in 1802. Athena is sympathetic to the air signs especially the justice and strategy of Libra and the intelligence and objectivity of Aquarius. She is aligned with the masculine archetypes of Mars and Uranus and close to Jupiter, her father's realm.

Juno, Asteroid No. 3, was discovered in 1804. Juno is the goddess of marriage and social customs. She

reverberates with Libra and the 7th house. Her passionate side is reflected through the 8th principle of Scorpio and interchanges between these two astrological principles reflect the goddess.

Vesta, Asteroid No. 4, was discovered in 1807. Vesta is the spirit of the 6th house, the domain of the sacred in the everyday, the rituals of work and well being. Planets in Virgo respond to the archetype as do inner planets aspecting Saturn, the need for authenticity.

Hygieia, Asteroid No. 10, was discovered in 1849. The axis of health in the horoscope is the 6th-12th polarity. The Sun symbolizes the vitality and the ascendant suggests how we conduct that vital life force. Chiron is the archetype of healing. Hygieia is very much concerned with these principles.

Ariadne, Asteroid No. 43, was discovered in 1857. Ariadne's story plumbs the depths of the water houses. She leaves the familial terrain of the 4th house to be abandoned by her lover in the labyrinth of the 8th but awakens to her divine connection in the 12th. Neptune aspects to Venus or Mars may highlight these themes. Ariadne's process is revealed with transits to planets in the 8th house or Pluto transiting Venus or Mars.

Europa, Asteroid No. 52, was discovered in 1858. Taurus, Virgo and Capricorn and their rulers Venus, Mercury and Saturn represent the earth instinct. Of all three signs Taurus is the sign most closely aligned with Europa's passions and power. Planets in Taurus or the second house constellate the mythic pattern while transits through the second house or to Venus may evoke issues concerning values and resources

Pandora, Asteroid No. 55, was discovered in 1858. Pandora is a change agent and therefore may be sudden and unexpected like Uranus. Her curious nature and marking of threshold change is Mercurial, linking Mercury and Uranus. As an agent of transformation she has a Plutonic essence as well. Planets in Gemini or Mercury aspects to Uranus or Pluto highlight the nature of Pandora.

Mnemosyne, Asteroid No. 57, was discovered in 1860. The Moon records, reflects and reveals every heartbeat, breath and nuance of primitive life. Therefore the progressed Moon evokes memory as it progresses through the horoscope. Aspects between the Moon and Mercury as well as other planets aspecting these planetary archetypes reveal the process of feeling and rational memory.

Hecate, Asteroid No. 100, was discovered in 1868. Aspects to Mercury may signal how we might manage crossroads, our facility for change and adaptability. Crossroads in the life cycle are mapped out by the cycle of the slower moving planets while personal crossroads are reflected in the transits of the transpersonal planets to the personal ones. Note the South Node of the Moon.

Cassandra, Asteroid No. 114, was discovered in 1871. Cassandra revels in the world of Neptune - the archetype of the medial woman. Aspects between Mercury and Neptune, or Mercury in Pisces reflect Cassandra. Interconnections between Jupiter and Pluto may also ignite a similar pattern.

Medea, Asteroid No. 212, was discovered in 1880. Medea is similar to the archetypes of Pluto and Scorpio, as she understands the process of metamorphosis. Planets in the Eighth House or in aspect to Pluto may conjure up the potent magic of Medea.

Goddess Mythology



Mythology serves as a psychological record of human development recording the imagination and symbols of the culture. Mythic stories speak to the inner life as they deal with universal themes and truths illustrating the archetypal forces that influence the course of the human drama. In archaic societies myths offered an explanation of the world and its creation, the cycle of birth, growth and death, how things came into existence as well as how they disappeared. In contemporary times we have scientific explanations for many of the ancient mysteries, but myth is just as valuable to help us to imagine our own origins and invest our lives with meaning. Mythic themes stir the imagination and broaden the horizon of the individual's story placing it in a context of a larger story.

Mythology is the link between the magical phase of being when consciousness participates in nature and the rational phase when we are separated from the natural world. The magical phase embraces the culture of the Great Goddess when life is full of mystery and wonder and we are one with the natural order, not separated or expelled from it. In this phase all nature is sacred as all life is invested with the divine. The asteroids are surrogates of the Great Goddess and reconnect us to her culture. As emissaries the asteroid goddesses and heroines invest life with the sacred, value imagination and mystery and inspire ritual and sacrifice in order to reconnect to the wellsprings of her magical forces.

Following is a summary of their genealogy and mythic tradition. Let the myths resonate with your imagination and speak to you in their own way.

The Roman goddess Ceres is also known as Olympian goddess, Demeter. She is the daughter of the Titan Cronus and Rhea and mother of Persephone. She is the Corn Goddess who personifies the agricultural cycle of fertility and harvest, as well as loss and renewal through her daughter Persephone.

The Olympian goddess Pallas Athena was a daughter of Zeus, born from her father's head after he had swallowed Metis. The Romans referred to her as Minerva. She is revered as representing the wisdom of reflection and strategy.

The Roman goddess Juno is also known as the Olympian goddess, Hera. She is the daughter of the Titan Cronus and Rhea and mother to Ares, Hephaestus and Hebe. She is the goddess of Marriage and Social Customs who oversees the seasons of a woman's life.

The Roman goddess Vesta is also known as the Olympian Goddess Hestia. She is the daughter of the Titan Cronus and Rhea and is the goddess of the Hearth who embodies sacred space.

Hygieia was the daughter of the Greek god of healing, Asclepius and the beloved goddess of Health. She is the sister of other minor healing deities and heroes including Panacea, Machaon and Podalirius. As the goddess of Health, Hygieia is the giver and preserver of well being whose function is to maintain a healthy relationship between body and soul.

The Cretan goddess Ariadne was from the Minoan dynasty. She is the daughter of King Minos and Queen Pasiphaë, granddaughter of Helios and Zeus. She is sister of Phaedra and half-sister to the Minotaur. As the wife of Dionysus, Ariadne embodies the sacred marriage having endured the trials of betrayal and abandonment.

Europa was a Phoenician princess, sister to Cadmus and matriarch of the Minoan dynasty, mother to King Minos and grandmother of Ariadne and Phaedra. She represents the creative and earthy process that supports and guides worldly success.

Pandora was the first woman, shaped by Hephaestus, to be the harbinger of a new age. She was married to Epimetheus and was the mother of Pyrrha. As a representative of the ancient ways of the goddess, Pandora brings the gift of hope.

Mnemosyne was a Titaness, a daughter of Gaia and Uranus, known as the goddess who personified the faculty of memory. As the mother to the Nine Muses she represents enchantment, inspiration and the power of remembering.

The goddess Hecate was the daughter of Perses and Asteria, the granddaughter of Phoebe, and a powerful goddess revered by all the gods. Later she became an attendant to Persephone. As an underworld goddess she was represented in her three-fold nature and was worshipped at the crossroads and as the guardian of transitions.

Cassandra was the daughter of Priam and Hecuba, the regents of the powerful dynasty of Troy. She was the twin sister to Helenus and sister to seventeen other siblings including Paris and Hector. From an early age she had oracular ability, yet no one believed her. Cassandra carries the feminine mysteries of divination even in a contemporary world that devalues the sacred tradition.

Medea was the Princess of Colchis, granddaughter of the Sun god, Helios and niece of the sorceress, Circe. Medea is the great witch of the Greek myths, knowledgeable in herbs, healing and the art of metamorphosis.

Ceres - The Earth Mother



*'I died to mineral and plant became
Died from the plant and took a sentient frame
Died from the beast and donned a human dress
When by my dying did I ere grow less?'
Rumi*

Ceres is the Roman agricultural goddess whose gift of grain, 'cereal', was distributed to mankind as thanksgiving for the release of her beloved daughter from the underworld and also as an eternal symbol of the continuity of life. Ceres is the goddess of agriculture who instinctually knows the cycle of loss, death and rebirth through her attachment to her beloved daughter.

The Roman goddess was modeled on her Greek counterpart Demeter whose central myth focused on the loss of her daughter, Persephone. It was this myth, which inspired the greatest initiation rites in the ancient world - the Eleusinian Mysteries. These mysteries re-enacted the terrifying journey of Persephone into the underworld and through these rituals both male and female participants faced their terror of death and became thankful for the gift of life.

Ceres, corn goddess, patron of farm life and vegetation is both an agricultural and underworld deity. She is an earth mother who presides over the cycle of fertility, birth, harvest, decay, death and rebirth. From the archaic period the goddess protected and insured the fertility and propagation of the crops and livestock. Her sanctuaries were placed near arable land, outside cities, where pilgrims would come to petition the goddess for a fertile crop and feast on the abundant gifts of food that the goddess provided.

Her myth was more ancient than her male contemporaries and reached back to the epoch when deities of the underworld (death) and the earth (life) were one. Ceres represents both loss and harvest and her classical story embraces each aspect in the myth of her daughter who becomes the Queen of the Underworld.

The myth of Ceres/Demeter and her daughter is a heartbreaking narrative of closeness, separation, grief and reunion, the motivation behind the establishment of the Eleusinian Mysteries. The brutal breaking of their attachment is the impetus that allows each woman to develop independently of one another into sovereignty over their own sphere. Since antiquity this poignant portrait of the mother-daughter bond has probably been the most cherished of all the Greek myths. The classical myth is also remarkable as it places the feminine characters at the heart of the narrative with the male gods on the periphery honoring a sacred and profound feminine story. The Ceres myth was first told in a hymn to the great goddess Demeter.

Kore, the innocent maiden Persephone, was playing in a meadow gathering flowers when the earth rumbled beneath her and broke open. Suddenly from the chasm in the earth a chariot drawn by four black horses appeared. In the chariot was Hades, the Lord of the Underworld, who seized her. As she struggled to break free the chariot carrying them disappeared into the black hole. Demeter wandered aimlessly in search of her daughter. No mortal or god could help her with information about her daughter's disappearance. Finally after nine days she met Hecate, the goddess of the crossroads. Hecate heard Persephone screams, the only clue to the abduction.

Demeter raged and withdrew the gift of fertility from the earth causing a great famine. She also withdrew herself from the company of the gods and in disguise wandered amongst mortals unnoticed. Grief-stricken, depleted and withered, Demeter wandered to Eleusis where she met the daughters of the local king who pitied her and brought her home. Their mother gave Demeter the task of caring for her infant son. Demeter nursed him on ambrosia and nectar and every night she would baptize the infant in fire in order to render him immortal and safeguard him from the fate of the eternal cycle of life, death and rebirth. However, one evening the Queen interrupted Demeter in the middle of her ritual and screamed in fear for the boy's safety. At that moment the cycle of mourning was broken. Demeter cast off her old age, changing her size and appearance to reveal herself as the great goddess and commanded the king to build her a great temple and introduce her worship to the people of Eleusis.

However, Demeter was still furious at the abduction of her daughter and withheld the new crop's seed so the earth continued to be barren. Zeus intervened and demanded Demeter return to Olympus and fulfill her duties. Demeter refused. Finally Zeus in his anguish agreed to release Persephone from the underworld so the crops would grow again. Persephone was eager to be reunited with her mother. But before she left the underworld Hades gave her a pomegranate seed to ingest. Innocently Persephone took the seed and swallowed it now binding her eternally to this place. Having eaten in the underworld meant Persephone now belonged there.

Demeter and Persephone's reunion was ecstatic and both rejoiced at the sight of one another even though they knew they would not be together as in the past. As the mother, Ceres indicates the necessity to nurture a creative project even though that means letting it go. By relinquishing an attachment a phase of the cycle ends and prepares us for a new beginning.

Astrologically the goddess Ceres represents the feminine wisdom that acknowledges loss. Loss is intricately woven into the tapestry of life; attachment, separation and loss are part of life's greatest mystery. Feminine wisdom knows that grief is only one phase of the great wheel and mourning allows the process to be complete so that life may be renewed. Following is a portrayal of the goddess Ceres in your natal horoscope.

Ceres is in the 11th House

Friendships play a key role in your life. You form strong bonds with your friends, enjoying their company in the good times and caring for them in the troubled ones. You are an empathetic and caring friend, ready with advice and comfort. You are popular with people from all walks of life. At some stage during your life you may need to question your motives in friendships. Do you really see your friends, faults and all, or do you see what you want to see? Do you have the right balance of give and take? This is particularly true for your friendships with women. You may need to take a step back and reassess your friendship with a prominent woman, making sure that this friendship is based on honesty and trust, not your need to manipulate or her need to struggle. Let go of your expectations and the friendship will either flourish or fail.

You gain your greatest sense of belonging when you are involved with a group of caring people. Hence you can often be found at the center of a group, organizing events or people. However, it is important that you do not get caught up in 'mothering' the group or taking care of others who need to take care of themselves.

You are also a born humanitarian. The plight of refugees and other downtrodden members of society weigh on your mind. Your wish is to see all humanity on an equal level, and you may decide to follow your dream of working for a humanitarian cause.

Ceres is in Aquarius

The goddess Ceres was challenged to learn about true intimacy in relationships, when to be intimate and when to let go. This placement of the goddess Ceres in the sign of Aquarius indicates that this is one of your central life lessons.

You thoroughly enjoy the company of your friends. You thrive in social situations. 'The more the merrier' could be one of your personal mottoes. You are popular, the center of any party and often the organizer of social events. You may even choose to work as an events organizer, promotions officer, marketing manager or any role that involves large groups. You are very accepting of other people because you need to feel that any behavior is acceptable, both your own and other's. Eccentricity does not faze you. This adds to your popularity because your friends feel comfortable in your presence.

Your intimate relationships are another story. You enjoy the romance and excitement of the chase, but you find it difficult to commit to any one person. You are a free spirit. The process of commitment feels like an elimination process for you. In other words you feel that you lose your sense of identity once you become too close to one person. Perhaps your mother was emotionally distant when you were young. You may have learned to cope by detaching from your own emotional needs. The process of becoming involved in an intimate relationship unconsciously sparks your earlier needs and your fear of abandonment. Therefore you are unlikely to commit easily. If you do forge a relationship then it is likely to be with someone whose work demands long hours or long-distance travel or someone who shares your need for intellectual rather than emotional rapport. You are likely to encourage any children in your care to be independent and free spirits.

Pallas Athena - The Wisdom Of The Warrior



*'I celebrate the powers of Pallas Athena, the protectress of the city:
Dread, as Ares, She busies herself with the works of war,
With the sack of cities, with the battle-cry and with the combats.
It is She also who saves the fighters that go to war and come back alive.
Hail, Goddess, give us good fortune and happiness Pallas.'
Homeric Hymn 11*

The architectural masterpiece, the Parthenon, was dedicated to the goddess whom the classical Athenians cherished. Pallas Athena was their advocate for law and order, the teacher of household arts like spinning, weaving, and cooking, as well as their protector and defender.

As their goddess of war she helped the Greeks defeat Troy, the Athenians repel the Persians; as their goddess of useful and decorative arts she inspired them to build exceptional monuments and temples. The goddess of merciful justice transformed the law courts and at the dawn of the fifth century she inspired the democratic shift in Athenian politics. Athena was the revered goddess of the Athenians who celebrated her birthday each year with a great festival and procession through the Agora up to the Acropolis.

As a multi-tasked goddess many images are associated with Pallas Athena but it is the owl that reminds us of her wisdom. Her intelligence is 'bright-eyed' and sharp, focused on the immediate, located in the present, aligned with the head and not the instinct. Pallas Athena embodies the rational and encourages left-brain thinking. Her wisdom controls the instincts, learning to direct them into heroic pursuits to eradicate what is dark and primitive. She is civilizing and organizing, bringing culture and cultivation to mankind. Justice and law are part of her new order replacing retaliation and revenge.

Strategic, reflective and controlled her craft and skill is mirrored in the multiplicity of devices she offered man, the fertility of her ideas and the usefulness of her inventions and techniques. As Pronoi she is 'before knowing' embracing forethought and strategic thinking. As a warrior queen she was born from the forehead of her father Zeus, fully armored and mature, suggesting that the wisdom of goddess had been reborn into a new order. As father's special daughter Pallas Athena mirrored the rational intelligence and counsel of Zeus. Metis, the mother of Athena, was an ancient goddess of wisdom known as Wise Counsel or Cunning Intelligence. She knew the feminine mysteries, the intelligence articulated by the heart and the inner world of instinct and intuition. From her Pallas Athena inherited another kind of wisdom: the wisdom of intuitive knowing often experienced in the belly as a 'gut instinct'. It is a knowing that may speak through symptoms or disease, through creativity or craft, or radiate through stillness and tranquility or even erupt in anger or

hostility. It is a wisdom born out of an intimate connection between mind and matter, a fluid way of being that the ancient Greeks knew as Sophia.

Athena is a proud daughter born from a power struggle between her powerfully dominant father and her intuitively wise mother. Consciously Athena only knows her father's way and the new order. Born of man, like Eve, this myth is often cited when tracing the emergence of 'father-right' from the long held tradition of 'mother-right'. The daughter is now aligned with the sky father who colludes in rejecting the earth mother. The tables have turned in the familial pattern and now it is father and daughter colluding against mother, no longer mother conspiring with her youngest son against the father. When Athena emerges she reflects the need for logic and rationality rather than feeling and instinct. Her path follows the reason of the head, aligned with her father, not the impulse of the heart, the vulnerable feminine side that she has not been nurtured by.

Like Eve, Athena's feminine legacy is not so easily erased. Both their myths contain the image of the snake, a sacred symbol of their legacy of feminine wisdom, healing and regeneration. By the classical period Athena's wisdom became subjugated to Zeus. Shaped by the masculine wisdom becomes linear, logical and rational. Metis is no longer acknowledged as her other parent. The internal wisdom of cycles, intuitive knowing and the complexity of intrapsychic understanding becomes concealed under Athena's armor.

Athena is also associated with the arts of healing, health and regeneration. As Athena Nike she was the goddess of Victory, first victorious in war and later a victor on the sports field. Athena signaled victory and as a patron of heroes she was also known as the goddess of the near, as she was always close to the hero and a staunch supporter of the heroic. As the goddess of war and defender of her father's realm Athena became aligned with the hero as his guide and protector. In mythic portrayals of the hero, Athena stands behind or beside him as his staunch ally against the monstrous and dark forces. When Pallas Athena appears prominently in a birth chart she encourages us to be heroic and battle the regressive forces of our instinctual nature. It is necessary to reflect on the situation and not react emotionally, detaching enough to formulate a decisive plan of action.

In astrology the goddess Pallas Athena represents the reflection and meditation that develops out of the turmoil of chaos and uncertainty, helping us to become more strategic and deliberate in our actions. Metis is the valued intelligence that guides our instincts and plans strategically and arises into consciousness at exactly the right moment. Pallas Athena discerns and through reflecting on emotionally entangled situations allows consciousness to develop. Following are the house and sign descriptions of the goddess Pallas Athena in your horoscope.

Pallas is in the 10th House

This is a prominent placement of the goddess Pallas indicating that matters of justice play a strong role in your public life. Your career, or your choice of marriage partner, may reflect your belief in right and wrong. For instance you may choose a profession linked to law or legal rights, politics, mediation, or diplomacy. The rights of women may feature in your public life or you may also choose a career that helps women. Whatever your choice, the goddess suggests you will make an influential impact upon your world.

In a man's chart it is possible that you marry a strong-minded woman, who offers insights and useful advice on how you can shine in the world. On the other hand you may benefit from the advice of a female boss or colleague. You do well when you listen to her advice. In some cases this can indicate a man who has decided to take responsibility for the majority of child rearing. You may enjoy being the chief cook and bottle washer while your wife goes out to work. Your executive abilities around the home are excellent.

The goddess Pallas Athena in a woman's chart in this position indicates that you are strong-minded, able to carve your own path. You shine in your chosen career and in your marriage, if you choose to marry. You are committed to the rights of women, or indeed the rights of anyone to have the freedom to choose their own professional path. You may work in human resources helping others to recognize their talents and make the best of them. In some cases this can indicate that you and your husband have decided that he will take

responsibility for the majority of child rearing. You may enjoy earning the majority of the income while he is managing the home front. However, your managerial abilities around the home and work are both excellent so it is more likely that you are a modern-day superwoman, handling all of the responsibilities at home and work.

You are well organized with executive abilities. You may be promoted to a high position quite early in life. You may also be surprised to discover how often you are called up for jury duty or asked to chair committees or boardrooms and how many of your colleagues defer to you for advice. You are well able to take on this responsibility, earning respect as long as you retain your integrity.

Pallas is in Capricorn

The goddess Pallas Athena is closely linked to politics. She was the goddess of merciful justice who transformed the law courts and inspired the democratic shift in Athenian politics. Therefore you are also likely to be linked to politics in some way. This could range from taking an active role as a politician or in a political organization to working on a committee for a special interest group. You are most likely to take an executive role because your ability to work, maintain order and offer wise counsel. You are likely to be adept at making money, or at the very least at coming up with sound ideas for financial gain. This will largely depend on other aspects of your birth chart.

Nevertheless the sign of Capricorn is strongly linked to the mineral kingdom, money and the laws of supply and demand. Therefore you are likely to have a good understanding of the money market, which you may or may not use to your advantage. You are keen to see that assets and resources are not wasted. Therefore you may choose to live frugally, expending your energy on traditional family values and alternative forms of energy. Solar power is just one of the forms of energy that you would like to see more fully utilised to help protect global resources. Alternatively you may work for a charitable organization, committed to helping better disseminate the world's resources. You are efficient, and your practical skills can benefit others. World politics may also fascinate you to the extent that you study or become involved in a foreign cultural organization.

On a lighter note you may enjoy reading biographies and autobiographies about people who have achieved a prominent and respected position in society, or perhaps practical manuals. You may also enjoy problem-solving mind puzzles. As an advocate of justice and fair play you take part in creating a better world for everyone.

Juno - Socializing The Soul



*'And wheresoever we went, like Juno's swans,
Still we went coupled and inseparable.'
As You Like It, Shakespeare*

Juno Regina shares the honor of the highest deity in the Roman pantheon as queen next to her husband-brother Jupiter, king of the gods. Each woman had their own guardian spirit named Juno, who guided their transitions into the stages of motherhood and marriage. As a light bringer she was also invoked for protection during childbirth. As the goddess of marriage her Roman name Juno was the derivative of June, the season of the bride. Women celebrated her annually in the festival of Matronalia. By the Roman period Juno had become emblematic of the woman as wife and citizen presiding over social customs and duties. In earlier Greek myths Juno was a powerful goddess in her own right known as Hera, the adored feminine deity of many powerful city-states.

The derivation of Hera's name may be related to Hora or season, as she is custodian of the seasons of a woman's life. On the Olympian pantheon she was the goddess of marriage and embodied social ritual and custom. At her cult in Argos young girls ran races to prepare for their marriage and the rituals of womanhood. In the Greek myths Hera was a wife and unlike her husband Hera does not have affairs. However, in Greek myth Hera also seeks revenge upon her husbands' liaisons with others. By the classical period the tales of Zeus and Hera rival contemporary soap operas where the cycle of betrayal, outrage and revenge is the central plot. Hera consistently plots revenge against Zeus' lovers and children from these affairs. However, there was an earlier time when the Olympian couple was not always locked in power struggles or scheming and bullying each other. This was when they first fell in love in the palace of their aunt and uncle where they were being hidden, protected by their mother Rhea from the familial wars that were raging with their father. Here in the great palace beneath the sea, they consummated their relationship, a relationship that was to remain secret for nearly 300 years. Underpinning the later myths are fragments, which reveal Hera was an ancient goddess before she became aligned with her brother in a sacred marriage.

Epithets of Hera such as 'cow-eyed' refer to her earlier association with the earth and agriculture, while her epithet 'of the white arms' may link her to an association with the Moon. She is often depicted in three phases as the maiden, the fulfilled and the solitary, a trinity of aspects represented by Hebe, Hera and Hecate. Hebe was the daughter of Hera and the cupbearer to the Gods who became married to Heracles after his ascension to Olympus. In this aspect Hera is the maiden, the youth and the aspect of the feminine that retains her virginity, even in relationship. The central phase was motherhood, wifehood and a woman of

power. Local folklore suggested she bathed in the streams of Argos where she was able to regain her virginity lost in the marriage with Zeus. Hecate was associated with the final phase embracing Hera's aloneness and need for solace. At times Hera would leave Zeus to go off on her own to pursue her needs for privacy, renewal and worship.

Hera was indigenous to Greece long before Zeus was triumphant. The cult of Hera may have been so powerful that unlike the other goddesses Zeus was unable to be dominant, settling instead for an equal relationship. Her cults on Samos and in Argos are linked to the prehistorical period. On Samos one of the first mammoth stone temples of the archaic period was built in honor of Hera. Similarly her temple at Olympus predates the magnificent one built for Zeus. No doubt Hera is an older goddess like Demeter and Hestia, her sisters who were born to Cronus and Rhea before their brothers. However, to incorporate Hera into the politics on Olympus she became the wife of Zeus and mother to his children.

Another mythic fragment, which suggests Hera is a powerful ancient goddess, is her link to Heracles. Even though their relationship is estranged Heracles is named for the great goddess. His name literally translates into the glory of Hera. Hera whose name closely resembles hero is aligned with the greatest of all heroes, Heracles and plays a potent role in many heroic sagas. Their antagonistic relationship ironically spurred him on to become the greatest hero and ironically myth depicts Hera as his mother-in-law. No longer the object of her scorn Hera has challenged Heracles to become the hero. As mother-in-law she models a strong and uncompromising woman who demands the hero be the best man for her daughter.

Juno and Hera are the composite that portray the seasons of a woman's life as well as the evolution of woman's roles. The spirit of Juno in contemporary woman has new power and possibilities and the placement of the goddess in our horoscope is an invitation to challenge the constructs of the social roles that are inhibiting for us. As a partner and equal Juno is supportive, enterprising, challenging and confronting helping shape potentiality into reality.

In astrology the goddess Juno represents the status and achievement in the world that are intricately aligned with social customs and tradition. Equality in relationship is necessary at all stages of the life cycle to insure both inner and outer fulfillment. Juno's ancient legacy is equal relationship and through her archetypal experience you can become aligned with your heroic self. Descriptions of the goddess in your astrological chart follow:

Juno is in the 12th House

You are searching for a deep and meaningful union, an intimate bond with another person. This is part of your heroic journey. You seek a soul mate, someone who can help you feel like a whole person. However, you need to be careful. No other person can fulfill such a tall order. You are searching for someone who totally satisfies your needs, rather than seeking an equal partnership of give and take. As a result your marriage is likely to be unbalanced. Perhaps you have chosen a fair and decent person but have failed to acknowledge the way in which you can support your partner, thinking only of your own needs.

You may be forced through circumstances such as your spouse's ill health, unemployment or profession to accept the role of caretaker. On the other hand your need to feel the devotion of another person may cloud your vision. You are susceptible to falling in love with love or becoming romantically involved with the notion of marriage rather than the individual!

As your marriage progresses you may notice your beloved change personality and you don't know why. It is likely to take some time for you to understand this process of transformation. The karmic links between you and your spouse are intricate. Contemplation, perhaps even psychological counseling, may be required to help you understand the deep subconscious patterns that have formed in your marriage. On a more positive note once you have accepted that you are a whole person in your own right, you do have the ability to form a more positive karmic relationship with someone who shares your outlook on life. You may enjoy a reclusive lifestyle, just the two of you, perhaps you share a love of meditation and prayer, or an interest in one of the

more esoteric arts. The lesson of the goddess Juno challenges you to keep seeking your own truth which consequently can be shared with your spouse but not gained by melding with another.

Juno is in Aries

You are ardent and passionate, looking for that special someone to share your life, but not anyone who is likely to curb your independent spirit. If you are single then you are likely to be busy pursuing your own interests, aware of the benefits of sexual attraction but perhaps reluctant to sacrifice your independence. Eventually you are likely to notice more than a passing attraction to one potential mate. This person is also likely to be independent, ideally someone who can live and work side by side without making too many demands. Once in relationship, you have a fierce and protective love of your marriage partner, but you also demand your own independence. You are faithful, happy to concentrate on your love for one person but you also expect your partner to be monogamous.

You want equality in your marriage. If anyone were going to be the boss then you would prefer to take the role! You are not easily subservient to your loved one. You are at your best when working alongside your partner as an equal. Your marriage fares best when you both have your own areas of responsibility, giving you both the freedom to get on with your own tasks. You enjoy tackling new projects together; however, you also like teamwork where each person is able to pursue their own ideas. Any interference in each other's business is likely to result in clashes of will. If your spouse tries to control your activities then you are likely to withdraw your emotional support, preferring your own company rather than the stress of having to cope with your loved one's will power.

However, it is more likely that you are the perpetrator, trying to direct your marriage in ways that suit you. Has your partner ever mentioned that he or she thinks that you are stubborn, impatient and like to run roughshod over their ideas and contributions? Do you also think that this is a case of the 'pot calling the kettle black' or are you aware that you may be intolerant of your partner's needs? The goddess Juno is asking that you discover your passion, what drives you to achieve and gives you the greatest joy. You may then share this passion with another, as long as you can refrain from imposing your will and support your loved one's own interests. This helps you discover great rewards in a union with another person.

Vesta - The Inner Life



*'Leave those vain moralists, my friend, and return to the depth of your soul:
that is where you will always rediscover the source of the sacred fire which so often inflamed us with love of
the sublime virtues;
that is where you will see the eternal image of true beauty, the contemplation of which inspires us with a holy
enthusiasm.'*

Jean-Jacques Rousseau

The cult of the Roman goddess Vesta was connected to the Greek Hestia. However, the Roman archetype had considerably altered from her Hellenic counterpart. By the Roman period the sacrament of virginity was liberalized, no longer conceptualized as a psychic state but now institutionalized as a spiritual way of being. Priestesses of Vesta, known as Vestal Virgins, served the goddess for a period of thirty years. While the position was privileged it also was one of great piety, devotion and responsibility. Vestal Virgins tended the sacred flame and guarded the Palladium, the secret objects brought from Troy to preserve the memory of the ancient city and protect the new satellite city of Rome. However, in ancient Greece Hestia was the embodiment of an internal and sacred space not a religious institution. Vesta's heritage reaches back to the traditions of honoring the authenticity of the inner life as symbolized by the spirit of the sacred flame, not a system of regulations.

In ancient Greece the goddess received the highest respect. Acknowledged as the deity mankind must first honor when feasting and drinking the goddess embodied grace and virtue. Veiled and virginal her sanctuaries were places of refuge, asylum and political peace. Constant, focused and disliking change Vesta is the hearth, a symbol for both the center and the focus of the home as well as the metaphor for family life and the family circle. As custodian of the hearth she is central to psychic life representing the sacral center, the goddess who honors sacred space and protects holy images. She embodies spatiality, conferring safe places to congregate, mediating soul by giving it a hallowed place to be acknowledged. As a virgin (unto herself) goddess Vesta is the custodian of soulful space personifying the stillness at the center of our busy everyday lives. As goddess of hospitality she also welcomes travelers across the threshold offering sanctuary and hospice. Vesta is the continuity of family life and the coherence it brings to our everyday experiences. Vesta was the first-born child, the first devoured by Saturn and the last one to be disgorged from his belly. Therefore she represents the beginning and the end, the alpha and the omega, the eternal cycle. Vesta is not a part of the outer rim of the cycle but situated at its center, personifying stillness, discretion, centering and immobility, aspects of her Greek counterpart, Hestia.

Few Greek myths remain of Hestia; she is rarely personified, no statues or temples remain, yet at times in the archaic period she was the most honored goddess, worshipped at the center of the city and the center

of the Greek household. By the classical period Hestia was not included as one of the twelve Olympians having been replaced by Dionysus. Hestia and her brother Hades are the only two siblings who remain detached from the Olympian family dramas and feuds. Unlike their brothers, Poseidon and Zeus, or their sisters, Hera and Demeter, they are not identified with their family of origin or their siblings. Their places are internal, interior and introverted. Few images or alters survive as reminders of their worship or importance in cult. There were virtually no temples erected to them and they were seldom represented in art, sculpture or vase painting. Neither were they parents to heroes like their siblings. As gods of place both Hestia and Hades have been re-placed and dis-placed which are potent clues as to what we culturally and psychologically have done with these archetypal energies. In a modern context this place of Hestia, as a metaphor for the hearth of inner life, has become dis-placed, re-placed by the rush and busyness of the outer world. When the inner life is sidelined and banished to the fringes of society, anxiety, terror and panic can no longer be constrained in the community. Hestia reflects the need for solace, quiet and retreat into the inner sanctuary of the Self.

As an image of center, Hestia is not personified or remembered by statues or temples but manifests through the sense of peace. She is the central point; the meeting place the fires of the home, the hearth, the Omphalos as the symbol for the center of the Earth. In antiquity her sanctuaries were non-warring zones, places of political peace. Plato remarked, *'when the Gods warred, only Hestia did not take part'* that characterized the goddess' propensity to non-involvement. In the earlier myths of Hestia she resisted the advances of both her brother Poseidon and her nephew Apollo and was honored with remaining eternally virginal, symbolic of her attachment to the inner life. She is the aspect of self, which can never be violated or abused and always able to access the soul. Hestia is central to psychic life and expressions like 'can't settle down', 'off center', 'being off base' remind us of being out of touch with Hestia. As the hearth she is a guide to the inner life and the central image around which soulful images can constellate. She represents sacred space, the meditative moment the soul of place and the feeling of home.

In astrology Vesta is the inner instinct that honors soul by giving it a sacred place, an altar, a quiet moment. She represents hospice and offers hospitality to the aspects of self that feel displaced and dislocated. As the hearth light she offers stillness, quietude, meditation and solitude in the midst of the everyday. The inner life is the container for anxiety and despair as well as a refuge from the pollution of daily life. Below are descriptions of where Vesta is to be found in your horoscope, the spheres where she seeks to be honored in your life.

Vesta is in the 4th House

Domestic bliss is your quest. You like to keep the home fires burning and your home and family are close to your heart. The daily routines in your household provide comfort and inspiration. When all is well in your private life then you feel able to follow your true calling. In fact your passion may be for creating a family. You may marry and have children at a young age in comparison to your peers. Alternatively you may create a real sense of belonging by purchasing a lovely property. In some cases you may travel to foreign lands in search of your true home. Perhaps your parents or grandparents traveled from a different country in order to start a new life. You hear many stories of life in the old homeland and are curious to visit your ancestors. You are proud of your roots and are an inspiration to relatives, both young and old.

Your choice of career may reflect your passion for homely matters. For instance you could work in property management, real estate, interior decorating or a family business. Whatever you choose to do to support you and your family you bring an aura of authenticity and integrity to your work. Your touchstone to a sense of safety and security is creating a solid and strong family base.

Perhaps an early childhood experience has sparked your appreciation of domesticity. The loss or sickness of a close relative may have deeply affected you and sparked your quest for security and happiness. Your young life may have involved sacrifices for family members. Now you are able to throw light on past experiences, to warm the hearts of your loved ones and to support your relatives' creative urges. Your search for understanding your roots may become a spiritual quest.

Vesta is in Cancer

You are well aware of the role that families play in society as well as both the positive and negative effects that families can have on individual members. This is also true for society as a whole. You are able to unconditionally accept family members, foibles and all. However, this is not always true for other people. You may or may not have suffered at the hands of your own family, but you are aware that love not judgment is vital for the growth of human beings. Families are the building blocks of society in your opinion. Therefore it is essential that people have a firm foundation on which to build their lives.

Acceptance of other people's values and family systems is also vital. These are the matters that motivate you to right the wrongs in some area of society. You are committed to supporting your own family members, even at great personal cost to your own desires. Education for future generations is one of your catch cries; however, you also need to nurture yourself. You are also committed to helping the less privileged members of society, especially disadvantaged children or animals. You may move away from home to achieve your goals, to a different neighborhood or even another country. You need to be wary of becoming disillusioned, as your own high ideals may not always be attainable. If you work with disadvantaged animals, children or families then you may find that your enthusiasm may be dampened unless you withdraw occasionally to stoke your own fires.

You have a kind heart and true purpose to show and teach compassion. You are a real treasure for your loved ones. A foundation stone for your sense of security and well being is the time you dedicate to the sacred. Therefore in the midst of administering to family and friends it is wise to remember your need for quiet, contemplation and peace.

Hygieia - The Soul Of Health



'Health, greatest of all the blessed gods, may I live with you for the rest of my life'
Hymn to Hygieia, Ariphron

In the ancient Greek sanctuaries of healing statues of Hygieia, the goddess of health, reminded the pilgrim of the archetypal quest for wholeness and well being. Adorned with a simple garment Hygieia was often represented as youthful, radiant and smiling, attributes that are companions of health. Either she is holding or feeding a snake. Carrying a bowl of food or water Hygieia is generally represented tending the sacred snakes that were housed in the temples on the sanctuaries of healing. Sometimes she is presented holding a wreath of laurel, combining victory with health, or other plants known for their medicinal properties, a motif that links her to an ancient tradition of woman healers, herbalists and midwives.

Hygieia's intimate relationship with the serpent recalls her link to the ancient goddesses of healing and nature. Earth and Mother goddesses were accompanied by serpents and the ancient belief was that they transmitted the power of healing and prophecy. As a symbol of both regeneration and divination serpents were sacred to the goddess who gave them sanctuary in the bosom of the earth. Later the cult of sacred snake was adapted and serpents were included in the rituals at the sanctuaries that offered healing and spiritual guidance. The ancients also saw the sacred serpent dwelling in the body and when awakened it could offer illumination, vitality and the radiance of well being. As nature became less mysterious snakes became demonized, no longer transmitting the ancient wisdom of healing but transporting demonic and darker forces.

Hygieia nurtures and tends the snake revering its sacred power to rejuvenate and shed its old ways. She celebrates its dark, earthy force and recognizes the divine mystery of illness and health. Like her ancient ancestors, Hygieia honored the union between the natural and supernatural worlds knowing that health and well being depended on bringing them both into a cohesive whole. Goddess wisdom also knew that all of nature was animated by spirits that could be petitioned through magical and religious ritual in an attempt to restore equilibrium and well being. Hygieia is the modern surrogate of the ancient goddesses who honor the great mystery of healing.

To the Greeks Hygieia personified health, that mysterious amalgam of well being, wholeness and happiness. She emerged in the classical period when the cult of Asclepius became widespread and flourished throughout the Graeco-Roman world. Hygieia was mainly represented as the daughter of Asclepius, the Greek god of healing, although sometimes known as his wife. Her numerous statues equal those of Asclepius and in the cult of healing she was revered and equal to the god himself. Interestingly the

popularity of temple medicine practiced at the sanctuaries of Asclepius paralleled the growth of rational medicine that had emerged through the teachings of Hippocrates. Hygieia stands at the crossroads of magico-religious healing rituals and contemporary medical practice, holding the tension between the two but allowing each to co-exist. She embraces wholistic healing in every manifestation as she is dedicated to the pursuit of health.

In the ancient community disease was portrayed as a possession by a demon, the intrusion of a spirit or the curse of a god. In the cult of Asclepius illness was seen to be more the call of the divine, the voice that echoed the split between body and spirit. It was the illness that called the pilgrim to the temple to restore equilibrium and well being. At the temple the patient would prepare for an encounter with the god often by fasting, bathing or meditating. Then the patient was escorted into the temple where they would lie down and fall into a deep sleep wherein the god would appear to them in a dream. Once contact with the god had been made through the inner process of the dream the patient would be restored to health. In the healing sanctuaries of Hygieia health was evoked through contact with the divine in the inner sanctuary of the soul. Yet synchronous with these practices were medical doctors who suggested that disease was a natural occurrence and not of the god's making. Hence Hygieia eventually became associated with mental health and well being as rational medical doctors gained a stronghold on the health of the physical body.

When Hygieia is strong in a birth chart we are reminded that health is the alignment of body and soul, heart and mind, outer success and inner peace. One at the expense of the other constellates dis-ease in the temperament that may manifest as a physical symptom, mental anguish or emotional pain. Hygieia is the personification of Health who calls us into the inner sanctuary of the soul to restore health and regain equilibrium. On a divinatory level Hygieia will be chosen when the healing of a situation is imperative. Rational healing is not the only answer. It must be accompanied by attending to the root cause, which ultimately is the illness in the soul. In a psychological sense Hygieia is soul of health, the urge to attend to psyche and its needs by nurturing our deeper urges and impulses. Feeding the snakes is a metaphor for nurturing the dark and mysterious aspects of the soul and attending to the unconscious.

In astrology Hygieia represents health that is forged through the alliance of the natural with the supernatural, the right brain with the left, the inner world with the outer, the serpent with the soul. Hygieia reminds us that health is an archetypal image embedded in the psyche. When the soul is not nourished or attended it speaks through illness and disease. The placement of Hygieia by house and sign that follow are where the goddess seeks her expression in your life.

Hygieia is in the 5th House

The 5th house of the horoscope symbolizes the theater of the self and with Hygieia in a leading role it suggests that your well being is intertwined with creative self expression. As a child the 5th house is the playground and the park where the freedom of open spaces inspired your urge to be vital and robust. Later it was games, sports and recreation that became critical to your physical and mental health. As an adult the playhouse of the 5th sector of the horoscope is the arena where you are able to express your artistic self. Therefore with Hygieia here it suggests that your vitality, happiness and sense of feeling healthy are intimately connected with the ability to express your creativity. As a child you would have first experienced how alive and vital you felt when engaged in play and this would be an early touchstone in forging your identity. Later your identity and sense of self would have matured the more you became engaged with activities that promoted your creativeness and imagination

Besides being entertaining and amusing the sphere of creativity is therapeutic in your life. You may have recognized how essential amusement and having fun are in reconstructing a healthy lifestyle. You also are aware of how activity and play engage the individual in feeling alive and well. Therefore you might have been drawn to work in physical education or sports training or be interested in therapeutic processes like sand play, inner child work or art therapy.

Your lifeline and road to health lead through the playhouse of the inner child. Therefore if there is not enough

time for play, enough joy, or enough space for the expression of the creative self you will probably become run down, prone to feeling off-color, even sick. Hygieia will call you back into her sanctuary where it is necessary to amuse yourself and become engaged in the theatrical production of your life. To regain, maintain or improve the health quotient in your life you need to take some leisure time to explore the creative aspects of your self and risk hanging out in the playground of your life.

Hygieia is in Virgo

Hygieia finds a safe sanctuary in Virgo as the essence of the sign is like the goddess. Both revere the need to be healthy and both honor the rituals of daily life that help us to feel whole. Therefore you will feel a strong urge to ritual and devotion and be moved to follow a dedicated routine in your daily life. Your devotional urge may be acted out through meditation, prayer or other spiritual techniques that put you in touch with the quietude of your inner world. You may prefer to be more engaged in activity through movement therapies like dance, yoga or Tai Chi, or voice your commitment to the spirit through chanting, singing and communicating. Perhaps you have an altar in your home that reminds you daily of your spiritual practice; no doubt, you make your home a sanctuary where you can feel safe. Whatever form this takes it is important that you honor your need to be in tune with the essence of peace and quiet in your everyday life and find time for an uninterrupted exchange with the inner world. Hygieia may also find sanctuary in your work, which hopefully includes a wellspring of, routine and ritual. If not it is important to create a meaningful ritual in your everyday world of work. Sometimes in the most demanding and essential work it is the dedication to the simplest tasks that make our work successful. And with Hygieia in this sign your most successful tasks at work are in the form of service, be it simply getting coffee for your workmates, cleaning the workspace to make others feel comfortable or bringing flowers to brighten up the office. A simple task is the trademark of the goddess.

Hygieia reminds us of the need to find sanctuary in the chaos of our everyday lives as this will be a preventative balm against stress and disease. Part of this sanctuary may be found in your dedication to keeping fit whether this is through daily walks, at the gym, or in the swimming pool. However, it may also be in your attention to nutritious foods, vitamins and supplements to the diet that boost vitality and energy. While you may not be trained in natural medicine it is apparent you are a lay naturopath and healer, as your garden is sprinkled with herbs, your kitchen is stocked with natural foods and your home is infused with healing aromas. It is important that you find your muse of health at the hearth of the everyday world.

Ariadne - The Labyrinth Of The Soul



'To be always fortunate, and to pass through life with a soul that has never known sorrow, is to be ignorant of one half of nature.'

Seneca

Daughter of the great dynasty of Knossos, Ariadne's fate was overshadowed by the curse that plagued her family. In the guise of a great white bull, Zeus had abducted her grandmother Europa from Phoenicia and brought her to Crete. Her mother Pasiphaë had also become enamored by a great bull. Ariadne participated in the family fate: as Pasiphaë's daughter her lifeblood was impassioned and as Europa's granddaughter her destiny was to abandon her ancestral home.

Poseidon cursed Ariadne's family when her father Minos refused to sacrifice his most magnificent bull to the god. Spurned, the god aroused Pasiphaë's shameful lust for the impressive bull that became embodied in her bull-son, the Minotaur, human from the shoulders down. Banished into the labyrinthine blackness below the palace Ariadne's half-brother, the Minotaur, fed on sacrificial children sent from Athens every nine years. Heroic Theseus was one of fourteen youths sent to Crete to face death at the hands of the Minotaur.

When Theseus arrived to participate in the bull games Ariadne's passions were ignited when she saw him for the first time. Beguiled by the handsome hero, Ariadne devised a plan for Theseus to slay the Minotaur and return safely through the dark tunnels of the labyrinth. For her complicity Theseus promised he would marry her and take her away to Athens. Unconscious that her fate was enmeshed with the god Dionysus and not Theseus Ariadne set upon her course to help her lover and in turn betray her family.

Through the dark labyrinthine tunnels Theseus crawled, quietly, mindful not to make sounds that would waken the sleeping Minotaur. Wrapped around his wrist was a ball of yarn, tied to the pillar at the entrance of the maze, which unravelled as he made his way through the dangerous tunnels. Ariadne's thread was the umbilical cord that connected him to the outer world and guaranteed his return after he killed the Minotaur. That evening Ariadne escaped with Theseus. In the dark Mediterranean night they set sail for a victorious return to Athens. Leaving behind her father and sacrificing her brother she surrendered to the passion that burned inside, the rapture only Aphrodite could inspire, a similar fervor that had inflamed her mother and grandmother. The next night Ariadne and her lover reached the island Naxos. Exhausted by traveling and fatigued from the emotional turmoil that had preceded their escape they collapsed into a deep sleep. But as the rays of the morning sun lit her face Ariadne awoke to discover her lover had vanished. At the edge of the shore she saw the sails of his ship in the distance. Athena had carefully woken Theseus before dawn, setting him on his course home without Ariadne. Abandoned, betrayed and used, Ariadne descended into

her own complex world on the shores of Naxos.

Blinded by her passions Ariadne had been complicit in her abandonment. In betraying her family to follow her hero she had set the cycle of betrayal in motion. Projecting her heroic self onto Theseus had left her separated from her own center. Alone Ariadne was forced to connect with her internal world. At this threshold Ariadne experienced an epiphany of Aphrodite the goddess who ignited the passionate fires that led to her suffering. Appearing to Ariadne the goddess revealed her true fate: she would wed her real soul mate, the divine Dionysus. Dionysus celebrated their sacred marriage by offering Ariadne the crown as the symbol of their intimacy and eternal union.

Ariadne's myth portrays the heart's painful journey when connection to the inner self is severed and sacrificed to the lover. Ariadne followed her lover's course rather than her own internal labyrinthine journey, losing her genuine direction. Using the thread, the symbolic connection to her inner core, to serve the hero Ariadne lost contact with her own inner wisdom. Abandoned she was no longer able to define herself exclusively through a partner; therefore a more authentic sense of self could emerge. The painful process of confronting her naïve trust and blind faith in Theseus enabled her renewal and redemption. In psychological terms a more divine sense of union is possible when projections onto the other are consciously relinquished. Dionysus embodies a woman's masculine spirit enabling her to define herself in terms of her own needs and not through someone else.

When Ariadne is prominent in the birth chart she reveals the course of the heart encouraging the individual to acknowledge that the threads to their inner self are tenuous and must be honored in relationship. Ariadne celebrates a more intimate connection with the heart, whether that is through a personal relationship, a new creative endeavor or a new course of life.

In astrology Ariadne represents abandonment as an archetypal process that strips away the mind's illusions in order to hear the calling of the true self. Confronted by the painful reality of being left the individual is forced to relinquish their hopes and fantasies in order to awaken to the authentic path of the heart. Ariadne embodies the soul in relationship that must first experience the painful course of the labyrinth before a divine connection can be realized. Following is the astrological thread that Ariadne weaves through her house and sign in your horoscope.

Ariadne is in the 8th House

You are likely to form a profound and spiritual partnership at least once in your lifetime. However, first you have to learn from your own mistakes, particularly when it comes to the most intimate areas of relationship: sex and money. You could form a partnership with someone early in your life that costs you dearly. This could be a business liaison in which you feel used or it could be a sexual union where someone distracts you from your true purpose. You leave home seeking your fortune and have a few adventures along the way. The adventures may be described more aptly as misadventures and eventually you are forced to reassess your liaisons. Fortunately this placement of the goddess Ariadne gives you many resources to find your way through the darker patches in your life. You have a deep affinity with the natural world, an almost psychic understanding of the weather patterns, instincts and habits of all worldly creatures. In a sense you easily traverse unconscious terrain. You may even seek knowledge of the metaphysical world in your journey to self-understanding. Labyrinths, mazes, pilgrimages and other alchemical symbols may hold special meaning in your life. You love to decode the mysteries of life.

Your challenge lies in the area of intimacy. You need to make sure that you form a deep and intimate bond with one person, a person to whom you can make a profound commitment without losing your own sense of identity. Monogamy is essential so that you can pursue your soul's purpose. In some cases this placement can indicate that you are drawn to live a deeply spiritual and celibate life. Whatever your choice you are likely to benefit from incorporating spiritual practices into your daily life. You are seeking profundity. Shallow interactions are not part of your destiny.

Your management skills are outstanding, because you understand the underlying needs and motivations of other people. You need to maintain confidence in your own abilities. At some stage in your life you may be faced with a crisis of conscience or confidence. You may lose your sense of purpose. You need to take time out, to tune into your inner self. You are able to do this through remaining still in the face of deep and painful emotions. Allow these emotions to pass by facing them and accepting them and you find peace. You are a powerful force to be reckoned with both in the material and spiritual world.

Ariadne is in Scorpio

You are on a quest to understand the mysteries of life. Do we have a soul? Where do we come from before we are born? What happens to us when we die? These are just a few of the questions that play on your mind. This quest may have been sparked by difficult or dramatic childhood experiences. Perhaps you lost a much-loved pet or person when you were a youngster. This is the classic scenario of a person who studies and practices psychology in order to fully understand his or her own beleaguered childhood. On the other hand maybe you were born seeking wisdom, a naturally curious child wanting to understand the mechanics of the material world and why people behave in the way that they do. You have a tendency to ask the difficult questions, preferring to understand what makes things and people work rather than skim the surface. On a mundane level you enjoy murder mysteries, unsolved crimes and courtroom battles. On a deeper level metaphysical subjects speak to your heart.

In your journey to enlightenment a powerful bond with a lover, teacher or boss may enthrall you. You passionately pursue this person and their ideals, perhaps even following them to distant shores or becoming involved in their intrigues. If you are not careful you run the risk of becoming lost in a maze of ardor, jealousy, obsession or betrayal. Abandonment of your own ideals underlies this placement so it is important to be conscious of what you are relinquishing in the relationship. Betrayal may be the painful surgery on the heart that lets you see the truth.

The goddess Ariadne's myth portrays the heart's painful journey when connection to the inner self is severed and sacrificed to the lover. Once you have lost your way you then face a journey into the dark side of your own soul, one from which you can rise triumphant, gaining an understanding of your own divine mission. Ariadne represents the marriage to the divine after the trials of betrayal and abandonment. This rather long quote by Northern Exposure's Stuart Stevens in 1991 says it all, 'There's a dark side to each and every human soul. We wish we were Obi-Wan Kenobi, and for the most part we are, but there's a little Darth Vader in all of us. Thing is, this ain't no either or proposition. We're talking about dialectics, the good and the bad merging into us. You can run but you can't hide. My experience? Face the darkness, stare it down. Own it. As brother Nietzsche said, being human is a complicated gig. Give that old dark night of the soul a hug! Howl the eternal yes!' Then like Ariadne you may awake in Naxos ready to meet a more authentic party of yourself.

Europa - The Soul Of The Earth



*'On a beach in Sidon a bull was aping a lover's coo. It was Zeus.
He shuddered, the way he did when a gadfly got him.
But this time it was a sweet shuddering.
Eros was lifting a girl onto his back: Europa'
The Marriage of Cadmus and Harmony, Robert Calasso*

Underneath the Cretan palace of Knossos hidden in a labyrinthine chamber lived a bull-man, the Minotaur, the shameful shadow of the Minoan clan. Two generations earlier the story began when Zeus shape-shifted into a beautiful white bull to seduce a young Phoenician princess named Europa. Like the gods of the old religion Zeus took the shape of a virile and magnificent bull to mesmerize the innocent girl who was unaware that her destiny would instigate the founding of two great dynasties as well as the continent named for the virgin Zeus had abducted.

Europa had been playing in a field gathering spring flowers to make garlands when she became enthralled by a large charismatic bull that meandered into the meadow. Possessed with desire to know the bull, she moved closer. Zeus, the bull-god, knelt before her gently beckoning Europa onto his back. She dared to climb upon him, and then slowly he took her step-by-step across the meadow towards the sea. With the power of a great god, the bull strode the waves across the sea to Crete. Europa clung tightly to the powerful bull, as she rode farther and farther away from her homeland. Zeus had made his conquest. He took Europa as his lover, fathering three children by her; one was Minos the founder of the Cretan dynasty.

Europa's father summoned his sons and instructed them to search for their sister and not to return home until the task had been accomplished. Cadmus set out on the quest, eventually journeying to Delphi to ask the oracle where he could find his sister. The oracle advised Cadmus to relinquish the quest for his sister, as his fate was to found the city of Thebes, not find his sister. In order to find the location of Thebes, he must follow a cow until it came to a place where it would lay down due to exhaustion. Europa had been abducted by a god disguised as a bull; her brother Cadmus is led by a cow to his destiny. Both siblings' destiny is to found a great dynasty guided by the commanding and enterprising bovine instinct. Like the zodiacal sign of Taurus the bull symbolizes inherent resource and power and the ability to either cultivate land or build structures that create wealth.

Europa's son Minos claimed the throne of Crete with the blessing of the god Poseidon, his great grandfather who offered him a gift from the sea. A sacred white bull majestically arose out of the ocean and Minos promised to return it to the god in sacrifice. However, the bull was so regal and powerful, Minos decided not

to sacrifice the majestic bull but substitute it for a prized white bull from his own herd. Outraged at the deceit, the earth-shaker Poseidon cursed the Minoan dynasty provoking Pasiphaë, Minos' wife, to be sexually obsessed with the beautiful god-like bull. Her craving led to her becoming pregnant with her monstrous son, the Minotaur. Minos' greed and failure to respect the laws of the gods produced a monster that had to be buried beneath the surface of the family in the labyrinthine dungeons of the palace. Buried shame or repression lurking under the atmosphere of the family home eventually surfaces through the next generations. This became evident through the fate of Europa's granddaughters daughters Ariadne and Phaedra. The myth the Greeks retold was a variant of a much earlier motif when the bull was consort of the earth goddess. Europa is the ancient goddess whose earthy instinct is powerful and resourceful. Europa heralds contact with the ancient feminine instincts that generate the power to create abundance.

Throughout the myth of Europa the bull image reoccurs. It is a multi-dimensional symbol of earthy passions, desires, magnetism, wealth and potency whose shadow is greed and lust. The Great Bull of Heaven was an image of archaic power, fertility and enterprise. The appearance of the heavenly bull of Taurus heralded spring when the bountiful Earth became carpeted with wildflowers and the cycle of courtship began. The great bull is engaging and charismatic constellating the generative power of the feminine. Aphrodite who symbolizes the beauty, sensuality and attractiveness of this archetype is the persuasive erotic power that draws Europa, Pasiphaë, Ariadne and Phaedra into her domain. Europa embodies the wealth and majesty of the bull, its earthy passions and its worldly triumphs.

Europa, as the bull-goddess, reclaims the power to construct and direct the course of her own life. When she is prominent in a birth chart it suggests the individual's present course is to construct a solid foundation that will secure the rapid growth of resources.

In astrology Europa embodies the ability to ride the bull, harness its power and give birth to its resourceful creativity. Innately she is the image of feminine power, guidance and direction. Embodying earthy instincts she knows how to cultivate the earth and create abundance through her passionate, attractive and commanding nature. How she finds expression in your life is explored through the goddess Europa's placement in your horoscope, as follows.

Europa is in the 2nd House

The goddess Europa is asking that you focus on ways to nurture and sustain your self-esteem. If other aspects of your birth chart indicate healthy self-development from child to adult then you are likely to thrive with this position of the goddess - enjoying personal and monetary riches. However, if other aspects of your chart indicate that you tend to rely on others for your sense of self worth then this could be a challenge. You need to rely on your own emotional resources, ensuring that others do not have the power to challenge your self-worth. The more you try to rely on other people, the more you are likely to feel as if circumstances are forcing you to maintain your independence. Even though you would prefer to sit back and relax in a warm and secure relationship you first need to secure your own sense of self. On the other hand you may enjoy maintaining a sense of self-reliance no matter what bonds you form with loved ones.

Money is likely to play an important role in your life. From a young age you discover that wealth is desirable and attainable. You have the ability to make a good income, but you will only keep it and build on it if you keep your other strong desires in check, especially the urge to overreach or take on too much. You tend to rate your services highly, but you are also generous with your earnings. You are more resourceful than most, but that doesn't mean that you have to give away your own income. You would be well advised to decide on a proportion that you are willing to donate to good causes and then invest the rest. This is particular true in women's charts, where the desire can be to support a man financially. You need to use your discretion to choose between a healthy decision to support a lover or husband and a need to shore up an unhealthy relationship.

You enjoy exploring different ways in which to invest your money and you are never foolish. You know when to make an investment and when to bide your time. You are not necessarily materialistic. You have the

ability to earn your income from your creativity or from products of the earth. You may also enjoy studying the spiritual laws of economics. Money inspires you to see the beauty in the world. As Oscar Wilde said in 'The Soul of Man under Socialism', 'Ordinary riches can be stolen; real riches cannot. In your soul are infinitely precious things that cannot be taken from you'.

Europa is in Gemini

Appearances are important to you. It is not that you are a shallow person, far from it. You simply like to present a façade to the world, one that protects and disguises your deeper feelings. You can do this consciously by separating your public and private life, presenting different personas so to speak. On the other hand you may not be aware of the dual nature of your interactions. Either way your loved ones are likely to see beyond the social trappings to your true nature. If you are comfortable, accepting the parts of you that are hidden from the rest of the world then you can enjoy the intimacy of close friendships and marriage. You are satisfied that your private and public lives are in balance.

However, if you are uneasy with aspects of your own personality then you are likely to be challenged in your most intimate relationships. At some stage in your life a lover is likely to really rock your world, asking for a commitment that you may feel unable to make. If this is the case then it is important for you to recognize your own depths, to accept all traits, the strengths and the weaknesses.

You enjoy social occasions and all the trappings - the camaraderie of acquaintances, the stimulation of conversation, the decoration of the venue and the appearance of the food and drinks. Your keen intellect and mischievous sense of fun are engaging. As such you may also enjoy organizing events on a small or large scale. You are also likely to enjoy working with committees, and groups that are linked through technology. The internet may be your playground where you get carried away to far off places!

Pandora - A Gift Of Hope



*'Hope sole remain'd within, nor took her flight,
Beneath the vessel's verge conceal'd from light'
Hesiod*

Pandora's story was written eight centuries before Christ in the epoch when gender roles were rigidly defined. Yet the mythic plot echoes timeless motifs, even ones used in contemporary science fiction. In Greek myth Pandora is the first woman, mother of all mortal women, created by the gods to assert their superiority over mankind. Cast as a femme fatale, a 'beautiful evil', she possesses a jar filled with toxins designed to pollute the race of mankind. Alluring, yet dangerous, Pandora represents a vestige of the ancient goddess culture threatening the emergent patriarch. Yet she also transports an indelible gift from the goddess embedded at the bottom of the urn.

Three centuries later her myth was carved on the marble base underpinning the spectacular cult statue of Athena. When designing the Parthenon and its decorations the Athenians chose the myth of Pandora to be the motif at Athena's feet. On the pedestal of the colossal statue suppliants to Athena were reminded of the creation of the first woman and the plagues she brought to bear on humanity, a striking contrast to Athena who brought victory and pride to the Greeks. Like Athena Pandora's birth was unusual. Fashioned out of the earth at the command of Zeus, Pandora was the instrument designed to punish mankind for the unsanctioned possession of fire stolen by Prometheus.

Zeus was furious when Prometheus stole fire from heaven, smuggling it in a fennel stalk and distributing it to mankind. With the theft the distance between man and god narrowed, as fire was the alchemical agent that would refine raw materials and promote the development of mankind. As the human race developed there would be less need for the gods. Zeus' revenge was to send a 'gift' to man that would counterbalance the profit mankind gained from using fire. To date men had lived without evil in a golden age, which now would come to an end through the guile of a beautiful woman.

Zeus instructed the smith-god Hephaestus to fashion a beautiful maiden resembling a goddess out of clay and water. Athena was to teach the phantom how to weave a web, Aphrodite was instructed to make her seductive and Hermes, the trickster-god, was to teach her how to be deceitful. Adorned with beautiful garments from the Charities, Zeus breathed life into Pandora, who was given as a gift to Epimetheus, the brother of Prometheus. In her hands she carried an intricately designed urn, the dowry Zeus had given her. Shut inside it was all the evils, storms and plagues that bring misfortune to mankind. Instructed not to accept any gifts from Zeus, Epimetheus became enchanted by the beautiful Pandora and forgot his brother's warning. Pandora opened the jar and before she could close the lid disease, old age, pain, toil,

death and all the other ills that plague humanity spilled out. When she was finally able to seal the jar nothing remained except Hope, trapped at the bottom. In their benevolence the gods had insured an antidote for suffering. Pandora offers hope when all else has failed.

The myth of Pandora was included in Greek literature synchronous with the time that the myth of Eve appeared in Jewish writings. In both myths Pandora and Eve become the patriarchal scapegoat for all of humanity's troubles aligning feminine power with evil. This mythic misogyny defines the time when masculine values were dominant and feminine values were denigrated, even demonised. Pandora and Eve became the composite projection of evil, blamed for their lack of foresight, chaos and feelings. Underlying the mythic stratagem was a motif from an earlier period when goddess culture was dominant.

In Greek Pandora translates into 'all gifts' and her entry into Greek myth suggested this name because the gods of Olympus each gave her a gift. However, this mythic thread is probably an inversion from earlier goddess culture when Pandora may have referred to the goddess giving gifts. Gift giving became an essential component of Greek culture and this inverted fragment reminds us of the abundant side of the goddess who offers us the cornucopia of plenty. Pandora is born of the earth like Gaia, supplying the gifts of life. And the gift of life she brings that cannot be destroyed is Hope. On a psychological level hope is the mechanism that breathes life into the soul after it has been bruised and deflated.

Pandora emerges at a critical time historically and psychologically. She enters Greek myth when the goddess culture has waned and been rejected and man is no longer in favor with the gods. Psychologically Pandora appears to offer hope in devastating times. She brings a powerful gift that cannot be destroyed by life's ills. Hope is the life force that survives the disaster evoking images of healing and improvement. When Pandora is prominent in a birth chart she confronts us to delve into the deepest part of ourselves to tap the reservoir of faith. Having survived the projections and denigration of the other, Pandora resurrects life once again through the auspices of hope.

In astrology Pandora reminds us that embedded in every disaster is the gift of renewal through the auspices of faith and hope. Illness, destruction, old age and pain are part of feminine wisdom and this knowledge stands in direct contrast to masculine fantasies of a Golden Age and Garden of Eden. How she enters our life is reflected in the placement of the goddess. Descriptions of the goddess by house and sign in your horoscope are next.

Pandora is in the 3rd House

From the moment you were born you were curious about the world around you. You may have been advanced in your childhood development. If you ask your parents and mentors about yourself as a youngster they are likely to regale you with stories of your early learning abilities, your responsiveness and your ability to chatter non-stop. Your ability to ask questions has never changed. You are quite determined to learn and understand a wide range of subjects. In fact you are a living example of the saying 'curiosity killed the cat'. Your inquisitive nature has always led you into troubled waters. You just can't seem to help asking questions and making certain choices that lead you into unknown territories. As a child you may have provided many memorable adventures for you and your siblings. Your colleagues, friends and relatives may warn you but that doesn't stop you. You make up your own mind and then follow through ever hopeful of a positive outcome.

You enjoy a challenge, particularly one that stretches your intellectual ability. Mazes, puzzles and mystery books all appeal. On a larger scale psychology, psychiatry, choreography, education, policy and language may be attractive. Your intellectual responses are sharpened through lively conversation, thought-provoking discussion and stimulating debates.

The positive side of your insatiable curiosity and determination is that as an adult, you are a born advocate, speaking up on behalf of yourself, your siblings and your neighbors. You ask the difficult questions and demand the answers no matter how much trouble this may cause. You know that the short-term

consequences are likely to be difficult but you are seeking the long-term benefits. Results are what count even if the path to achieving your goals is a little bumpy. This means that you can be an inspirational advocate and public speaker, representing the less powerful members of your community. You also have the ability to be a sympathetic and wise counselor, unafraid of facing the truth no matter how traumatic other people's stories turn out to be. You are ever hopeful of overcoming intellectual hurdles and healing matters of the heart through empathy, sharing stories and offering compassionate understanding. As a result you offer hope to many people in your vicinity.

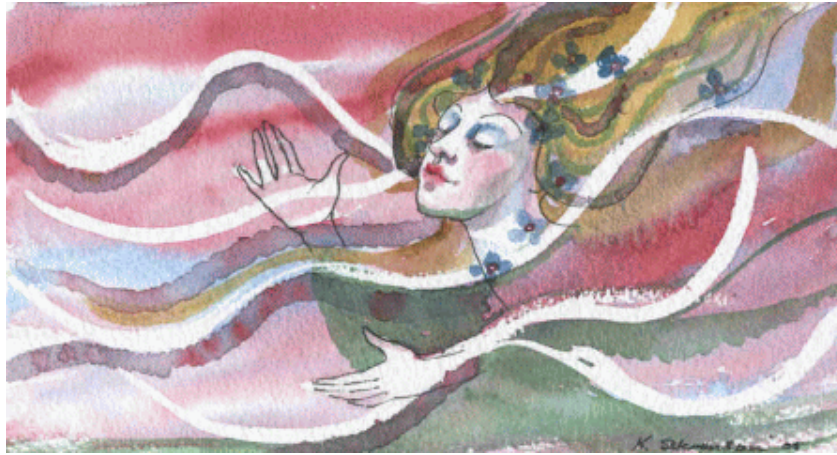
Pandora is in Gemini

You love baubles and gadgets - anything shiny, collectible, innovative and amusing. Any object that opens and shuts fascinates you. Contraptions arouse your natural curiosity. These can range from the everyday workings of a wristwatch to the more complicated machinations of computer technology. For this reason you may recognize, from a young age that you need to make enough money to help you satisfy your curiosity.

You may also be fascinated by the way money circulates in the economy. In fact you are fascinated by a variety of things, able to juggle a few things at once. Pursuing different directions simultaneously may be a bit stressful so be aware of your propensity to overtax the nervous system. People also captivate your interest. What motivates some of your friends? What are their hobbies? What are their plans for the future? And why do they make particular decisions? You enjoy gossip; however, you are also able to be quite charming and sympathetic, becoming a confidante. Be careful to keep your counsel. Otherwise your intentions may be misunderstood. You would be well advised to keep your friend's secrets, to lend a sympathetic ear but to refrain from meddling.

Offer your loved ones the message of hope. The goddess Pandora has given you the gift of humor. You can help uplift the troubles of others by taking an understanding but light-hearted approach to life's challenges. Your sense of fun can assist in lightening the load of those who cross your path.

Mnemosyne - The Soul Of Memory



*'Thou fill'st from the wingèd chalice of the soul
Thy lamp, O Memory, fire-wingèd to its goal.
Dante Gabriel Rossetti*

The faculty of memory was so important to the ancients that it was personified as a goddess. In Greek cosmogony Mnemosyne was the daughter of Uranus and Gaia, a pre-Olympian goddess who characterized Memory. Being one of the original deities Mnemosyne is the custodian of memory before the advent of writing, literacy, books, recordings and computers. She embodies the voice of an oral culture that communicates from the soul through stories, pictures, metaphors and body language. Mnemosyne finds her voice through the poetry of images revealing her memoirs through a dream, a feeling, a response, a longing or a sudden thought that darts into consciousness. Embedded in the fragments of a song, a myth, or a fairy tale linger ancient truths that awaken the goddess. Dwelling in the soul Mnemosyne unexpectedly arouses memory through our senses and bodily reactions.

To the ancient Greeks memory was a goddess residing in the heart. Memory was soulful, an aspect of psyche that was creative and evocative and the ancients also saw the goddess as mother of the Muses. Goddess culture honored her form through three phases and originally Mnemosyne was celebrated through the Muses of meditation, memory and song. In early myth the Muses were the triune aspect of memory who inspired poetry and song. As rational science and beliefs began to emerge the seat of memory began to shift to the brain, aligning memory with a more logical and calculating experience rendering Mnemosyne a passive goddess who collected and stored life's impressions. Later myth suggested there were nine muses. Zeus visited Mnemosyne for nine nights and was the father of her nine daughters, the Muses, the inspiration and manifestation of the soul of memory. As mistresses of healing and prophecy the Muses inspired and taught others to contact a deeper knowing through their imagination and creativity which guarded the wellspring of memory. As custodians of the arts each had a sphere of influence which they inspired and animated with ancient images and recollections. History, Music, Comedy, Tragedy, Choral Dance and Song, Lyric Poetry, Religious Dance, Astronomy and Epic Poetry were the personifications of the ancient goddess of memory. Apollo, lord of the rational sphere, became their guardian and leader.

Memory's daughters are the muses, the ones who inspire and enchant the soul. Through her and her daughters we are able to engage in weaving the fragments of memory together to evoke meaning. Mnemosyne reminds us to remember the ancient ways. The goddess of Memory is not just a passive recorder of experience and events but a poetic and heart-rending process that inspires the imagination. Mnemosyne re-collects the emotional experiences, feelings and impressions of our life. She is the archive of all that we have tasted, touched, wanted, smelt and felt. Her memories are stored in the psyche as

images, symbols, feelings, impressions and instincts or become imprinted in the body, in the adrenal or olfactory glands, the tension in the muscles, allergies and illnesses. Mnemosyne is rhythmic and reflective, not linear, evoking dreams, images, songs that give continuity to our life's narrative. Memory and imagination are woven together when Mnemosyne and her daughters are aroused.

To the ancients the sacred sanctuary of Mnemosyne and the Muses was the museum. These ancient shrines dedicated to the goddess ceded to the structures we know today as museums where we house the great works of the imagination. On an inner level the museum is the sphere of Mnemosyne where impressions and feelings from the past are evoked in the present situation.

In astrology Mnemosyne, the goddess, helps us remember images and impressions from previous phases of our life in order to give meaning, context and insight into these experiences. She acts as a loosening agent, allowing buried complexes, taboo feelings, repressed memories to breathe again to find some place in the sunlight of consciousness. She connects passages of time together. Links can be made back to times in the previous cycle allowing space for the process of reflection and musing. Following is a report of how Mnemosyne brings the muse into your life experience.

Mnemosyne is in the 11th House

Memory is an important part of anyone's personality and identity. As far as you are concerned it is your memory that helps bring you closer to friends, groups, organizations, and societies. You enjoy spending time with friends, and taking part in group activities because it helps you feel a sense of belonging through the memory of shared experience. In fact you may become the group historian, the scribe, the record keeper or the storyteller of the group.

Communicating with other people inspires you further in your own work. For this reason you are likely to organize social events to commemorate important dates in your own, and your friend's calendars. You particularly enjoy significant dates in your own culture like Thanksgiving, Christmas, Easter, Ramadan, Rosh Hashanah or Passover. No matter what your background or religion you like to mark significant occasions in your calendar with friends or your local community. You are also keen to ensure that your friends intermingle. You can see value in all of your friends and in all cultures. You like to hear your friends' stories and in listening you start to see the links between various people, who don't know each other. You are keen for them to meet and share their common thread. For this reason you are skilled at networking, linking people with shared interests or skills. You may also enjoy book clubs or chat groups on the internet. You are more likely to join or lead a group of similar interests rather than a random social group because you are most focused on shared interests, a common language so to speak.

Although you enjoy working with groups and perhaps on committees, you are unlikely to receive accolades and recognition for your efforts in groups. You are more likely to be the secretary or public relations officer rather than the Chief Executive of an organization. If you join a committee then you are more likely to be a hard-working member or the secretary rather than hold the prominent position of President or Chairperson. This does, of course, depend on other aspects of your birth chart. Nevertheless you are seeking shared experience of working towards a common goal rather than appreciation or accolades. You agree with author Lester J. Pourciau who says, 'there is no monument dedicated to the memory of a committee.' You are generally philosophical rather than ambitious. Your individual hopes and wishes are linked to learning about friends, groups, society and humanity rather than personal ambitions. You are aware of the fact that all people are linked at a spiritual level and that we are all striving to do our best to live successfully on planet Earth. This gift for understanding others plays a key role in your life. The goddess Mnemosyne is urging you to inspire others with your philosophical, spiritual or artistic gifts.

Mnemosyne is in Pisces

You are a muse, an artistic and poetic person with a vivid imagination. It is so important for you to find an artistic outlet for your creative vision. The goddess Mnemosyne finds her voice through the poetry of images revealing her memoirs through a dream, a feeling, a response, a longing or a sudden thought that darts into

consciousness. Embedded in the fragments of a song, a myth, or a fairy tale linger ancient truths that awaken the goddess. The goddess of Memory is not just a passive recorder of experience and events but a poetic and heart-rending process that inspires the imagination. Mnemosyne re-collects the emotional experiences, feelings and impressions of our life. All of these things she asks of you.

Perhaps you feel this yearning? Or perhaps you have buried it deep under the responsibilities of daily life? Your soul longs for expression. You must find time to express your truth, your imagination, even if only in a daily journal that you tuck under your bed. If you do not follow your heart's desires then you could feel lost, like a wanderer trying to find a safe haven. You are a gentle soul and prone to depression if your life lacks meaning. If you start to feel despondent then you need to rediscover your creative spark through spiritual or artistic means. Tell your friends about your dreams, read about other people's epic journeys, inspire yourself with beautiful artwork or watch an inspiration film. Do whatever you can to discover the wellspring of artistic talent that yearns to be free. You can express yourself through music, art, poetry, film, theater, or any form of writing. If you tune into your intuition then ideas and words will flow.

Your artistic nature and works are likely to bring joy to all who come into contact. Of all of the signs of the zodiac the goddess Mnemosyne is the most poetic in Pisces. Poetry is likely to speak to your heart. You can read other people's poetry, listen to the poetic words of songs, attend poetry readings or write your own. As English poet John Masefield wrote, 'since the printing press came into being, poetry has ceased to be the delight of the whole community of man; it has become the amusement and delight of the few.' A Poet Laureate, John Masefield was known, amongst other things, as the poet who wrote about the sea. A love of the ocean is likely to feature largely in your own life. You may spend many a moment daydreaming while soaking up the sun, smelling the salt water and feeling the wind. You recognize the importance of valuing the sacred moments in daily life, the importance of myth and magic. The goddess Mnemosyne is urging you to express these values so that you, and those who come into contact with you, can experience joy and peace.

Hecate - The Soul In Transition



*'Leave those vain moralists, my friend, and return to the depth of your soul:
that is where you will always rediscover the source of the sacred fire
which so often inflamed us with love of the sublime virtues;
that is where you will see the eternal image of true beauty,
the contemplation of which inspires us with a holy enthusiasm.'*
Anthony Robbins

Hecate became associated with the dark phase of triple goddess who embraced the spheres of heaven (Selene), earth (Artemis) and underworld (Persephone). Her initial association with the underworld was as an attendant to Persephone. It was Hecate who heard Persephone's screams when Hades dragged her down into the netherworld. Hecate was also present when Hermes escorted Persephone out of the underworld. As a guardian of the threshold Hecate witnessed Persephone's descent and release. Her cave is located between the earth and the underworld confirming Hecate's role as an intermediary, bound to neither world but in between both.

As a threshold goddess Hecate is encountered when the paths of our lives converge and we are uncertain which fork in the road to follow. Throughout antiquity she was worshipped at the intersection of roads and by Roman times she was known as Hecate Trivia, the goddess of the three ways. On the night of the New Moon pots of food were left at the crossroads as votive offerings to the goddess. 'Hecate's suppers' honored the transition of one lunar cycle to the next on the night that the old month ended. Statues with three bodies and three heads were erected at crossroads for travelers to leave offerings and say prayers to Hecate for guidance across an important threshold.

At transitional spaces where paths converged travelers would pass from one world into another, therefore crossroads became associated with spirits and shades. Hecate became aligned with ghosts and hallucinations as the ancient Greeks attributed the power to conjure up the dead and the phantoms of the imagination with her. Known as the leader of souls she was associated with magic, divination and contact with the shades of the dead. By the classical period Hecate had become affiliated with witchcraft and magic, known as the goddess of ghosts and night terrors. Her companions were dogs. As guardians of thresholds and instinctually able to trace a scent hounds represented Hecate's instinctual wisdom. By later antiquity Hecate had become the patroness of witchcraft.

Hecate's triple aspect was also reflected in the phases of the Moon. As 'Mistress of the Moon' Hecate governed its dark phase. Sappho called her the 'Queen of the Night' and as a light bearer she often carried two torches. Knowing the wisdom of cycles and their triune phases of birth, death and rebirth the lunar

goddess also represented the menstrual crossroads in a woman's life cycle. As a birth goddess she was an intermediary figure not only for souls departing their body but also for souls entering a new one. Hecate appears at the threshold of change in women's lives as she enters a new phase of the life cycle. As a lunar goddess associated with fertility rites she is aware of the richness of the dark and hidden treasures. In her dual role as guardian of the threshold and Queen of the Night she knows that every decision taken at the crossroads must come from a deeper level of soul.

Since her early depiction in epic Hecate has become denigrated, often portrayed as a negative and a dangerous demon of the dark. Disassociated from the totality of the lunar cycle she has become identified only with its dark phase. Fear of the dark, death and the underworld were projected onto Hecate who represented the dismembered connection to the feminine wisdom of cycles. Her ancient myth reminds us of her perpetual role as an intermediary and attendant at the crossroads. We meet her on the precipice of change, at crossroads, on doorways, in transition. During these times of initiation Hecate helps us to accept our disorientation between two ways of being.

When the goddess Hecate is prominent in a birth chart she depicts the area in which we are at crossroads in our lives. Time can sometimes seem suspended while we reorient ourselves to a new way of being. Confusion, loss and disconnection are natural moods during this phase as we let go of what has been in order to greet what may be. By house position Hecate would suggest where you will encounter her in your life; by sign she colors your life with magic and mystery. Following are the astrological descriptions where Hecate enters your experience.

Hecate is in the 10th House

The goddess Hecate is a powerful influence in your birth chart, indicating that an authoritative woman, probably your mother, plays a prominent role in your early life. Your father is unlikely to be the head of your childhood household, as this position suggests the prominence of feminine principles. Your mother, or another female relative, is the boss. The extent to which this influence has a positive or negative effect depends largely on other aspects of your birth chart; however, your mother does make a significant impression of your choices in your adult life.

In a positive scenario your mother is a strong woman, able to command respect in both happy and difficult periods. Her wisdom and good common sense set an admirable example. It is possible that your father is absent in your life, and that your mother has had to struggle on her own. On the other hand it may be that your connection to your mother is more evocative than your bond with your father. Positively speaking, she teaches you what to do at different crossroads in your young life, which helps you later in life. She teaches you many life skills, preparing you to leave your family as a young adult and strike out independently. She is also able, by example, to teach you how to maintain a mutually supportive bond with your spouse.

On the other hand it is possible that your mother has had a detrimental effect on your adult life. The darker side of this placement of the goddess Hecate is that your mother, or grandmother, could be too powerful in your family system, reigning like an overpowering monarch. As you are growing up you may start to feel oppressed by this woman's level of interference in your life. You feel that you are missing out on a bond with your father. As a result you are likely to want to break free, leave your family home and learn how to live your own life without meddling from others. Your adjustment to independent living may be quite tumultuous. Your challenge is to connect with your own sense of self, your own spiritual purpose, and to create a life that works for you. You need to integrate the positive lessons that have been passed down by your mother, but to break away from any manipulative tactics. Once you feel powerful in your own life, then you are more likely to see her influence in the light of another human being trying to do their best. In order to do this you may benefit from taking part in rituals whenever you make major changes in your life direction. For instance a graduation ceremony can mark the end of one form of schooling and the beginning of a new phase, and a wedding ceremony is an important statement to society of your commitment to another person, as well as your change in social status. These rites of passage can assist you at the crossroads of your life.

Hecate is in Aquarius

You are a powerful presence in groups. These could be groups of friends, family gatherings, political parties, or work-associated committees. Whatever the group you are the guiding force! The potent goddess Hecate is linked with the gregarious sign of Aquarius suggesting that you know that unity brings about change. Therefore you're likely to be at heart of transitions made by groups. This can be a force for good, or you can get caught up in nasty politics.

On the lighter side you enjoy family gatherings, social events and productive group meetings. You are aware of the undercurrents and are able to act as intermediary and advocate. The goddess Hecate helps you calm and soothe troubled times and avoid turning points that could lead your friends and colleagues down the wrong path. The only drawback is that you are such a powerful influence; you may inadvertently enforce your values onto other people. Are you really sure that you are doing the right thing for everyone involved or are you pleasing yourself? Has the group actually asked for your help, or are you interfering unnecessarily? You may be acting according to your principles but are you giving other people the freedom to learn from their mistakes? These are all questions that you need to constantly ask in order to keep your goals and dreams on track.

You are farsighted, able to see future trends. As a result you are an adept recruiter, campaigner, salesperson, and public relations manager. You may sail close to the edge in your efforts to please all parties. You need to make sure that you act with integrity. Just because everyone else is doing it, doesn't make it right. You may reach a crossroads in your own life during which you question your values, your contribution to family, friends and groups. You may be tempted to start again in a different field of interest, or in a new environment. You may welcome a 'sea change' as your hopes, dreams and wishes take a turn. You seek spiritual fulfillment and are being called on to find a more spirit-filled role with all of your social contacts.

Cassandra - The Prophetic Soul



'And though I have the gift of prophecy, and understand all mysteries and all knowledge, and though I have all faith, so that I could remove mountains, but have not love, I am nothing.'
1 Corinthians 13:2, Bible

Cassandra stood on the walls of Troy and watched Paris' ship enter the harbor. Her brother had returned from Sparta having seduced Helen away from her homeland to bring her to live in Troy as his wife. With the blessings of Aphrodite Paris and his lover Helen had snuck away from her palace undetected and sailed across the Aegean to Asia Minor. A dark cloud shrouded the ship as it anchored. When Cassandra watched her brother and Helen disembark and approach the city gates she was flooded with images of Troy's destruction, filling her with an ominous and terrible feeling. Possessed by this eerie perception she uttered a warning to the crowd that was gathered at the gates to welcome the couple. From deep inside she divined the future: Helen's entrance into the city would lead to its destruction. Ignoring Cassandra and her prophecy the crowds turned away to welcome the new royal couple into their city. Time and time again her message was rejected and ridiculed. Ten years later a similar scenario would unfold. Cassandra would warn the Trojans not to accept the wooden horse into their city. Once again no one would heed her accurate predictions. The Greeks, angry at Helen's abduction, sacked Troy and left the city in ashes.

Cassandra was one of the daughters of the royal family of Troy, a sister to both Paris and Hector and twinned to her brother, Helenus. When the twins were infants they accompanied their parents to the temple of Apollo to celebrate a festival in honor of the oracular god. During the ritual the twins fell into a deep sleep. Two temple snakes slithered into their basket as they slept and bit them on their ears injecting the gift (or poison) of prophecy into them. From that day both Cassandra and Helenus were known for their prophetic nature.

Having the gift of sight Cassandra entered the temple to serve Apollo being called to her vocation as his Pythia, the voice of the oracular god. However, Apollo fell in love with her and demanded she reciprocate his desire. But Cassandra refused to consummate the relationship preferring to worship the god in spirit, not body. Enraged Apollo found a way to avenge her rejection. Knowing he could not retract the gift of prophecy that he had given her when she was so young he cursed her so no one would ever believe her prophecies. The god begged her for one kiss and Cassandra consented. As she opened her mouth to kiss the god Apollo breathed his curse into her insuring others would no longer value her prophetic vision. He turned his back on her, condemning Cassandra to see the perilous future yet never able to be understood or believed. Cassandra, cursed by the narcissistic god for rejecting him, was later violently assaulted by Ajax upon the altar of Athena when the Greeks were ransacking Troy. After the sack of Troy the leader of the Greek fleet

Agamemnon took her as his slave back to his palace of Mycenae. As she approached the mammoth walled city her images of destruction became more and more intense. Racked by the violent visions she screamed a warning for Agamemnon to not enter the palace foreseeing his brutal murder at the hands of his wife. In her heart she also knew that entering the city with him would result in her own death.

Cassandra personifies the medial woman whose intuitive faculties and understanding of the unconscious patterns are not welcomed in an ordered rational society. She sees what others are too fearful to see and exposes the inevitable patterns that underpin the situation. In an atmosphere of control and denial Cassandra is marginalized and demeaned becoming the projective reflection of the fear of chaos and uncertainty. Disbelief and ignorance render her wisdom impotent. When dark feelings, dread or grief are repressed in the atmosphere Cassandra is the medium of their expression. Her curse is that she is not identified with her feelings leaving her misunderstood and marginalized. Her feelings, identified by others as autonomous ravings, isolate her. Cassandra is able to sense what is taboo and unlive but unable to remain separate from it.

Cassandra represents the archetype of medial knowledge. Unlike the ancient world there are no longer sanctuaries or sacred places to honor her way of knowing. She reflects the need to be aware of our medial skills and intuitive knowledge and seek training to help strengthen the ability to use this skill and not be overwhelmed by it. When Cassandra appears prominently she encourages the individual to find a voice for the medium through understanding the symbols, images, signs and omens of unconscious language. She embodies the ancient ways of knowing in a culture that no longer values prophecy and divination. Her knowledge is not objective but oracular. To embrace Cassandra we must abandon logic, separateness and rationality and enter into the irrational world where meaning is revealed through feeling and connectedness. However, Cassandra reminds us that in a scientific and ordered society our knowing may be rejected. Cassandra encourages us to have the strength of our convictions and a strong and healthy identity about our beliefs.

Oracular knowing springs out of the collective through an unconscious and unbound participation with everything in the environment. When boundaries are blurred and the veil between the worlds is lifted we enter into a participation mystique with the spirits of the world beyond us and may be called to act as a vessel for their message. Cassandra in your horoscope reveals where you are sensitive to the pattern of the goddess. Following are the placements of Cassandra in your horoscope by house and sign.

Cassandra is in the 7th House

As a young child you watch and learn from the interactions of your parents. If they share a positive and loving bond then you are likely to learn that relationships are a gift. As an adult you develop a deeply rewarding bond with a marriage partner, and possibly also business partners. On the other hand if your parent's relationship is fraught with difficulties then you are likely to be more sensitive than usual to the potential undercurrents in marriage unions. As you grow older you may be wary of forging your own commitment to another person, believing that your personal gifts will disappear.

Whether you grow up with loving or feuding parents, you have a wonderful ability to understand the benefits that can come through joining forces with another person. If you choose not to marry, then you are likely to form bonds with other people that help develop your gifts. Perhaps you become involved in creative projects that benefit both yourself and those working closely with you. On the other hand you may work as a marriage guidance counselor, mediator or diplomat.

In a woman's chart this placement of the goddess Cassandra can indicate an intimate bond with a dominant partner. This union needs to be closely monitored. You must be vigilant in making sure that you are not overly influenced by the other in your life. In other words you can form a strong love union, but do not let your marriage partner have control over you and your decisions in a negative manner. Ensure that your spirit is strong in this relationship.

In a man's chart this placement of the goddess Cassandra can depict partnerships with an influential woman, or possibly more than one. This union is likely to bring great personal and/or professional rewards. You need to ensure that you respect the wisdom and choices of your female counterpart in all contracts.

Cassandra is in Libra

The magic of relationships, the art of diplomacy and the inspirational power of beauty are prime motivations in your life. You have the ability to pursue any or all of these arenas and excel. However, you also have to be wary of misusing these powers. Integrity is vital; otherwise you could slip into bad habits such as flattering people to suit your own ends, or to maintain the peace. Harmony is not always attainable, no matter how clearly you can see its necessity. Speaking the truth may upset the status quo. Yet you are compelled to say what must be said even if it may be contentious or upsetting.

You like to imagine a world where beautiful people relate lovingly to each other in tranquil and inspirational surroundings, a veritable Garden of Eden. You risk intervening where you should not in an effort to create such a world. One of your major lessons is in living with conflict, learning when to use your powers of diplomacy and when to remain silent. Others can easily misunderstand your need to interfere in important matters. Therefore you can offer advice only when it has been sought, step into conflict only when you have been invited and create beautiful scenarios only where they are welcome. Another option open to you is to explore your imagination and need for beauty in the arts. In fact you are likely to excel in the fields of beauty or the arts - theater, dance, opera, painting, drawing, puppetry, poetry, modeling, fashion design, playwriting etc.

The placement of Cassandra in the sign of Libra in a woman's chart suggests that you are an artistic and loving woman, aware of the power of words to affect the lives of others. You are intuitive and prophetic and can channel these feelings into productive creative endeavors. . Through this powerful sense of knowing you may excel in an artistic profession.

In a man's chart this can indicate that you are attracted to artistic women, who play a diplomatic and inspirational role in your life. Perhaps you have a muse who inspires you to be creative and fulfilled.

Medea - Herbalist And Healer



'Of all things upon earth that bleed and grow, A herb most bruised is woman'
Euripes, Medea

Medea, a princess of Colchis, was known as the 'wise one' for her skill of healing and proficiency at using drugs and herbs. Colchis, which gives its name to Colchicum, the meadow saffron, was a kingdom on the Eastern shores of the Black Sea, considered a foreign, barbaric land through the eyes of a civilized Greece. Medea's ancestors were linked to both the sun and healing long before Apollo became the god associated with these realms. Helios, Medea's grandfather, was the Sun god of the old order, born a Titan's son. Her aunt Circe was a sorceress, a magician, herbalist and healer who knew the ancient ways of plants and spices and how to cast spells. Circe had trained Medea as a young woman in the arts of sorcery, magic and herbalism, teaching her how to mix potions, direct spells and rearrange matter. Medea was also a priestess in the temple of Hecate, honoring the goddess of the dark night and magic. Hecate guided her instincts. As a medical intuitive she knew the magical properties of herbs, the appropriate plants for healing, homeopathic tinctures and the process of preparing and administering these remedies in her caldron. As the surrogate of Hecate Medea knew the timing of the lunar cycle and how to draw down the moon when ritual and ceremony was needed.

However, Medea was unable to withstand the unholy alliance of the goddesses Hera and Athena who petitioned Aphrodite to conspire with them and cause the princess to fall in love with Jason. Medea became enchanted by Eros and fell in love with the Greek hero, who had come to Colchis to retrieve the Golden Fleece. Medea helped Jason achieve this impossible task with the help of special ointments, incantations and timing. Medea enabled Jason, her heroic/lover, to succeed at the trials set before him but in helping Jason be successful Medea had to betray her family and flee her homeland.

On their flight from Colchis Medea visited her aunt Circe who absolved her of her betrayal and eventually Medea arrived at Jason's birthplace, at the foot of Mount Pelion in Thessaly. When she arrived in her new homeland Medea used her great skill at the arts of magic and herbs to rejuvenate Jason's father but also used her sorcery to trick the king's daughters into unintentionally killing their father. To prepare for this procedure Medea disappeared for nine days collecting the special drugs and herbs that she needed. As the Moon swelled she gave sacrifices to her goddess Hecate, then used drugs to help Aeson, Jason's father, fall into a deep sleep. She then cut his throat to let the old blood run out, dismembered him, putting the pieces in a caldron with the liquid herbs she had prepared. Jason's father emerged from the caldron rejuvenated, forty years younger. Medea's spell captured the daughters of Pelias, the wicked uncle of Jason who had usurped his rightful claim to the throne. The daughters also wished to rejuvenate their father and Medea said she would perform the task again. The daughters prepared their father by dismembering him;

however, this time Medea did not put the herbs in the caldron and their father never emerged.

Having been responsible for the murder of the king Medea and Jason once again were forced to escape. While fleeing Medea's herbal bag broke open, spilling her drugs seeding the plains of Thessaly with an abundance of healing and magical herbs. As the first sorceress to perform rituals in Thessaly Medea is the seminal figure behind the region being known as 'the land of the witches'. Her myth intimates that she introduced woman's herbal knowledge from Asia Minor into Greece.

In later myth Medea is usually remembered, not as the skilled healer, but as a revengeful and spurned partner, a woman caught in the grip of jealousy for which she had no antidote. By the classical period the playwrights depict Medea consumed with rage, murdering her own children to avenge Jason's infidelity. However, Medea is more a reminder of the great respect and knowledge of healing, herbs and magic that was brought to the West and then subtly ignored and eventually demonized. Underpinning the myth are fragments of an older tradition. Jason's name means 'healer' and his partnership with Medea complements the old ways of healing before the emergence of rational medicine and the demonization of magic.

As botany evolved away from gathering herbs and digging roots of the pastoral communities to empirical and detailed research, purification ceremonies and the use of herbs became replaced by manmade drugs and prescriptions. The connections to the more instinctual, earthy and natural ways of healing were left behind. Traces of magic, ritual healing and evoking the spirit of the disease began to disappear in the Western medical tradition. Left to carry the ancient process of magic was Medea, the embodiment of the archetypal witch. As a heroine Medea champions the feminine wisdom that knows intuitively knows how to cooperate with nature and her cycles. She instinctually knows the right time to perform rituals and ceremonies to evoke the healing spirits or exorcize the demons.

When Medea is prominent in a birth chart she reveals the need to explore the ancient feminine traditions of herbalism, witchcraft and magic ritual. Intuitively we know the natural cycle of the body and what it needs to be well. Medea reminds us to honor the ancient custom of relating to the plant world, the wisdom of nature and the powerful healing and transforming properties embedded in the natural world. Instinctually the witch is the impulse that draws us to remedies and potions at the right time and is the urge to create ritual and ceremony to evoke the powers of the goddess. Following are astrological account of how the force of the goddess may be revealed through your horoscope.

Medea is in the 12th House

While Medea may be comfortable in the watery depths of the 12th house it does not necessarily translate that you will be at ease with this archetypal energy that is so deeply embedded in your psyche. Energetically Medea is not appreciated in our logical scientific world where knowledge needs to be measured and intuitive feelings need to be rationalized. Therefore your deep instincts, feelings, ways of knowing things and ability to see beyond this dimension may be put down and ignored. From an early age you may have been the one identified as being too imaginative or too 'strange'.

Yet interestingly the more those around you denied the more this realm of magic and mystery, the more in touch you became with your inner sense of knowing and seeing. An aspect of your fate includes the uncanny ability you have to know things or sense the future. While this may not be welcomed, even by yourself, it is a pattern that you will recognize and need to learn to accept as you mature. However, you're not alone. In the annals of your family history there will be those who would have had similar abilities and experiences. While they may not have been necessarily integrated or spoken of in your ancestral chronicles, nonetheless, they were part of your tribe. Innocent people became scapegoats in witch hunts and metaphorically speaking this is part of your racial memory. In some sense you're also redeeming this lost and misunderstood aspect of the family fate. Since this pattern in the family may still may be enshrouded or lost in shadow most familial members will still be in denial of this aspect.

While in your early years this may have contributed to you feeling marginal, in later years this will be able to

be more incorporated into your personality. This suggests that you're selected in a way to redeem mystery and magic from the storehouse of the past. You have inherited an intuitive, even mediumistic quality that allows you to communicate with other dimensions and worlds. It is important not to be afraid or dismissive of your feelings, hunches or visions but recognize them as part of a legacy. While your association with this way of knowing will make many feel uncomfortable it will draw those who are in need of comfort and healing to you.

Medea is in Pisces

Medea's lineage was powerful having inherited the wisdom of the witch from her aunt Circe, the regal poise of a queen from her father and the ability to be all knowing from her grandfather. Like Medea you too have a rich legacy. As the goddess is placed in the final sign of the zodiac it suggests your fate is to identify and consciously direct the visionary legacy that was inadequately expressed in your ancestry. Pisces is the sea, the vast, boundless, eternal sea that is also the symbol for the unconscious. Medea is the wise woman whose knowledge of magic and mystery is powerfully transforming. Together these two forces combine to produce the insight and wisdom necessary for the therapeutic understanding of the self and others. Therefore you may have instinctively been drawn to psychic development, devoted to a religious path, compelled to become a healer or psychotherapist. This combination blesses you with the ability to bewitch some with your presence and put others under your spell. However, all gifts are double-edged and the curse may be that you too become lost or confused by your own magic charms or the web of your fantasies. Your destiny leads you into the watery realm of the unconscious where you must metaphorically learn to read the weather patterns and know the tides. Perhaps the best you can do is to sail upon it or like a mermaid, swim in it.

Perceptions shift and uncertainty, confusion and ambiguity are present when we are engaged in the realm of the unconscious. With the goddess in your chart you are called on to trust the process you are in, revere the lunar way of knowing by listening to the voice of your unconscious as it speaks through dreams, feelings, and somatic responses or through omens, signs and synchronicities. You may feel under a veil of illusion as you are drawn away from everyday reality into the fluid world of imagery and vision. This leaves you vulnerable to the unconscious of others. Therefore you need adequate boundaries when involved with others, enough time to pursue your own projects and occasional time out for retreat and revitalization.

Medea's herbs are Echinacea root to cleanse the lymphatic system and golden seal that can aid as an antibiotic while a flower essence that might be helpful is rock rose. You have a great capacity to understand the dialect of the unconscious as it speaks through symbols, signs, omens and metaphors. Therefore as an affirmative ritual to the goddess record your dreams in a journal. In this realm Medea's knowledge of ritual and magic will help assist you in the important transitions of your life. Remember when you are faced with difficult choices or overwhelming decisions you will be empowered through ritual to choose the right path. Let the powerful feeling guide you to making the choice that is right for you.

Conclusion



This report is meant more of an introduction to the wonders of the asteroid goddesses rather than a complete course in its intricacies. When using this report, please bear in mind that, inevitably, every chart will contain some contradictory influences. Usually it is the responsibility of an astrologer to synthesise these apparent contradictions in order to present a cohesive and meaningful interpretation of the dilemmas of the chart. Further studies, or a consultation with a professional astrologer, are encouraged to explore this most ancient scientific and philosophic tool. We hope that you will discover a common thread that gently winds its way through the 12 Goddess placements in your chart, a thread that inspires you to continue to follow your dreams and discover the Goddess or God within.

About the Authors: The text in this report has been written by astrologers Stephanie Johnson and Brian Clark. Stephanie Johnson is a professional astrologer with a passion for seeing clients, writing astrological text and creating quality astrology software. She was a journalist in Australia, England and the USA before becoming a professional astrologer. She is currently the sole director of Esoteric Technologies Pty Ltd, and one of the creators of Solar Fire and Astro Gold. Stephanie is based on the Mornington Peninsula in Victoria, Australia. She is the driving force in the creation of the Solar suite of software and runs her own international consultation business and astrology report writing service. You can find more information at www.seeingwithstars.net

Brian Clark was the co-founder of the Chiron Centre, located for many years in Melbourne, Australia. As a consultant astrologer for more than 30 years he is deeply interested in astrology from a healing perspective. After a successful four-year teaching program in astrology for over 25 years, Brian has redeveloped the syllabus as a distance learning program (www.astrosynthesis.com.au) leading to the Diploma in Applied Astrology. He has his BA (Hons) and MA in Classics and Archaeology from University of Melbourne. Brian also lectures on myth and conducts tours to sacred sites in Greece through Odyssey. Brian has been honoured with a Life Membership from the Federation of Australian Astrologers (FAA). He is the author of Solar Writer - Vocation and Solar Writer - Kindred Spirits. He and Stephanie Johnson have collaborated on Solar Writer – Goddess.

About the Artist: Kay Steventon is a Melbourne based artist/astrologer. After graduating from R.M.I.T. in 1980 with a Diploma of Fine Art, Kay gained the F.A.A. Professional Astrologer qualification, and 'Living The Tarot' Diploma. Since 1966 Kay has had many solo and mixed exhibitions in Melbourne and overseas, specialising in symbolic art in 1992. Her first Tarot deck and book, 'The Spiral Tarot', was published in 1998. Kay's second Deck, 'Celestial Tarot', was published in 2003 with the Celestial book written by Brian Clark. A 52-card deck, 'Goddesses and Heroines' was published in 2018, again a joint effort by Kay and Brian Clark.

About Stella Woods



*'I am most happy to recommend Stella Woods to anyone who is in any way interested in Astrology.
Her gifts are absolutely marvellous and in sharing them, she does a great service to humanity.'*
Swarupa Sridharan, CEO Om Consulting

Stella Woods has been studying, reading and teaching astrology since 1987. Born in the UK, with an honours degree in French Language & Literature, Stella became interested in astrology and other esoteric studies when she moved to Australia in the mid-eighties. Since then she's offered astrological advice to thousands of clients; taught astrology and tarot; lectured at international conferences; hosted a radio talkback show on Melbourne's 3RRR 102.7 FM; written a monthly column for Australian new age magazine, Living Now and co-produced moon calendars for Australia, New Zealand, Italy, North America and Canada.

Stella is a member of the Tarot Guild and the APA (Association of Professional Astrologers). She also holds certificates in Medieval Astrology and Spiritual Group Facilitation and has studied Literary Symbolism, Kabbalah and Jungian Psychology. Stella has lived in the UK, Europe, North America and Australia and speaks fluent English, French and Italian. Her book *The Seven Secrets of Magic & Manifestation* was published in 2012. On a personal level Stella is totally passionate about astrology, tarot and the art of manifestation. Her dream is to bring these ancient teachings back to life by sharing their power and wisdom with humanity. In 2016, after 30 years in Melbourne, Australia, Stella relocated to Yorkshire in the UK for family reasons but continues to be available for online readings, consultations and private lessons.

If you'd like to get in touch with Stella, book an online astrology reading or order a birth chart report, visit www.stellastarwoman.com or email stella@stellastarwoman.com