

Inner Goddess Report for Marilyn Monroe

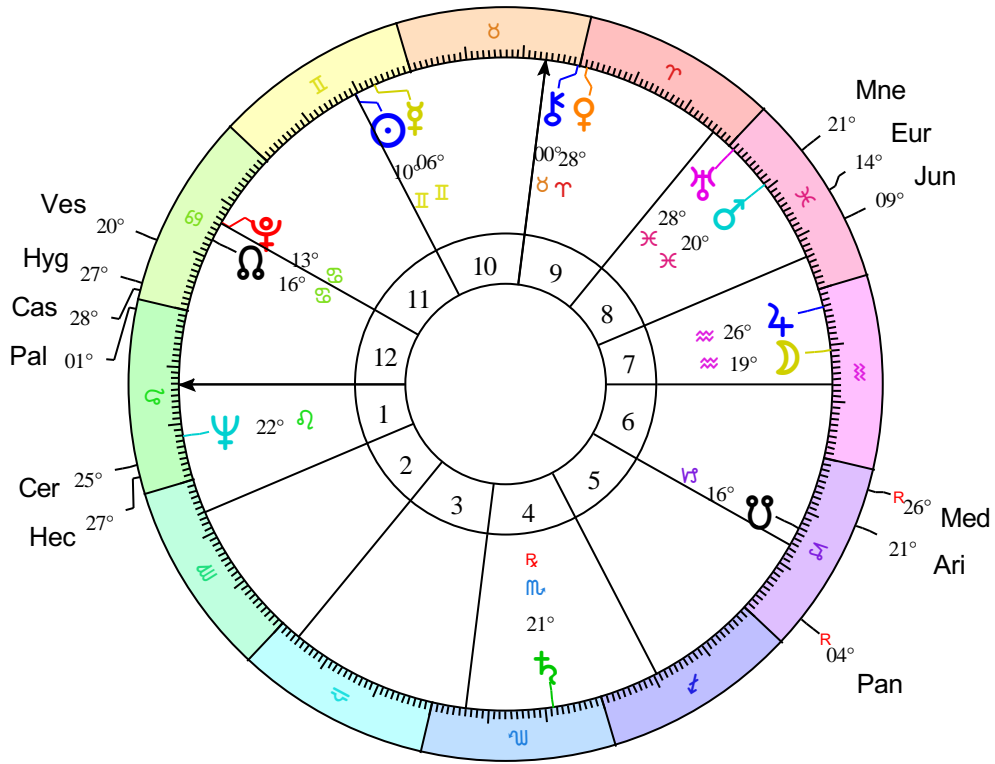
Stella Starwoman

*PO Box 2282, St Kilda West
VIC 3182, Australia
www.stellastarwoman.com
stellaw@ozemail.com.au
+61 (03) 9534 5021*

Stella
Starwoman

Marilyn Monroe

Female
 1 Jun 1926
 9:30 am +8:00
 Los Angeles
 34°N03'08"
 118°W14'34"
 Tropical
 Placidus



Key

Abbr	Asteroid
Cer	Ceres
Pal	Pallas Athena
Jun	Juno
Ves	Vesta
Hyg	Hygieia
Ari	Ariadne
Eur	Europa
Pan	Pandora
Mne	Mnemosyne
Hec	Hecate
Cas	Cassandra
Med	Medea

Astrological SummaryChart Point Positions: Marilyn Monroe

Abbr	Asteroid	Sign	Position	House	Comment
Cer	Ceres	Leo	25°Le26'	1st	
Pal	Pallas Athena	Leo	1°Le34'	12th	
Jun	Juno	Pisces	9°Pi10'	8th	
Ves	Vesta	Cancer	20°Cn36'	12th	
Hyg	Hygieia	Cancer	27°Cn27'	12th	
Ari	Ariadne	Capricorn	21°Cp05'	6th	
Eur	Europa	Pisces	14°Pi09'	8th	
Pan	Pandora	Capricorn	4°Cp31'	5th	
Mne	Mnemosyne	Pisces	21°Pi26'	8th	
Hec	Hecate	Leo	27°Le18'	1st	
Cas	Cassandra	Cancer	28°Cn39'	12th	
Med	Medea	Capricorn	26°Cp50'	6th	

Introduction



The Goddess is the custodian of life's mysteries and the primal world of archetypal forces. As representative of the world soul she engages us in the sacred rites of nature and reanimates life through the cycles of birth and death. Goddess culture flourished in the prehistoric period when magical consciousness prevailed, supernatural forces were deified and natural forces were revered. As consciousness developed through its phases the wisdom of the goddess was buried beneath the rational constructs of a scientific knowledge that erased the mysteries from life and excluded the magical processes.

With the advent of the asteroids the wisdom of the goddess is once again available to consciousness. Goddess wisdom revels in the ancient wisdom of cycles, the intelligence of the inner life, the sanctity of divination, the mystery of healing and the necessity for sacrifice and ritual. The ancient feminine wisdom of the goddesses embraced all phases of life, celebrated its mysteries, ritualized its passages and knew the power of the natural world. The Solar Writer - Goddess report celebrates twelve goddesses and heroines and seeks their wisdom and guidance.

The maxim 'as above, so below' underpins the philosophy of astrology. Inner and outer lives are woven together through investing the celestial sphere with meaning. Therefore when astronomical discoveries are made astrologers find new meaning and revelation in them. Astrological tradition suggests that with the major discovery of a planet the collective is confronted with the conscious awakening of an archetypal force that may have previously lain dormant or been repressed. As the 19th century dawned a discovery of a small planet would be made, heralding the reawakening of feminine power and the wisdom of the Goddess.

Late in the 16th century Johannes Kepler first suggested that there might be a planet between the orbit of Mars and Jupiter. Nearly two centuries later the publication of Bodes Law reiterated this possibility. Based on the theory that all the planets were in a harmonic distance from the Sun the law suggested there should be a planet orbiting between Mars and Jupiter. When Uranus was discovered in 1781 its distance from the Sun conformed to the law giving greater weight to the theory of the missing planet. Finally on New Years Eve 1800 a Sicilian astronomer spotted a new body in the region and named it Ceres after the patron goddess of his homeland. To the Sicilians Ceres favored their island and it was here they claimed Hades abducted her daughter.

One year later its orbit was confirmed and although small in comparison to the other planets the missing planet had become visible. But early in 1802 another body was sighted between Mars and Jupiter and named Pallas Athena.

Astronomers wondered if a planet had exploded in this region and therefore more would be discovered. And they were. More than four hundred of these small planets had been named as the 19th Century drew to a close.

It was not until the early 1970's as the woman's movement began to accelerate that astrologers began to take note of the significance of these new bodies, which were named asteroids. In 1973 an ephemeris of the first four discoveries was printed and the astrological community began to experiment with these new archetypes. The first four asteroids were named after the Olympian goddesses who had been previously unnamed in the astrological planetary pantheon: Ceres, Juno and Vesta were the three sisters of Jupiter while Pallas Athena was his daughter. All four were prominent in Greek myth and their cults predated their male counterparts. Previously in the astrological pantheon only the Moon and Venus were available to represent the lineage of the feminine traditions. Renewed images of the feminine had now appeared in the astrological tapestry. As astrologers began using these potent images of the asteroids the cults of the ancient goddesses were rediscovered, paralleling the cultural reclamation of feminine power. With the discovery of the asteroids and their use in astrology the ancient feminine wisdom of the goddess was brought to consciousness.

Each goddess in your personal Solar Writer - Goddess report has a specific function, being emblematic of an important sphere of your life. Every one embodies a different aspect of the Goddess herself. However, all twelve are involved in the handiwork of the Goddess. Therefore underlying each individual goddess is the sanctity of being, the awareness of the seasonal cycles of our life cycle and the acceptance of inner intelligence, signs, symbols and dreams. All twelve honor the instinctual wisdom of nature and follow her guidance.

These twelve goddesses preside over the three spheres of Heaven, the Earth and the Underworld. Being Olympians the goddess Ceres, Pallas Athena, Juno and Vesta are the goddesses of heaven who oversee the important initiations and transitions of the life cycle. These four goddesses were also the first named asteroids and the ones most frequently referred to in contemporary astrological literature. They personify four potent feminine functions or orientations to life. The goddesses of the underworld are powerfully insightful and understand the deep waters of the unconscious, the complexity of feelings, the power of mystery and magic and the uncertainty of life. These goddesses may reveal themselves through a healing crisis, the psychic senses, loss, betrayal or a myriad of other mysteries that arise in our lives. Hygieia, Cassandra, Hecate and Medea are the four goddesses who plunge the depths of the unconscious realm. Finally the goddesses who rule the Earth symbolize our worldly concerns and attitudes. Ariadne, Europa, Pandora and Mnemosyne are the influential representatives in the world who watch over our loves and labors, as well as our trials and triumphs.

The Solar Writer - Goddess report is a celebration of twelve of the numerous asteroids. Below the asteroid goddesses and heroines have been listed by their order of discovery. Each asteroid has its unique cycle and position in the horoscope. Keywords are listed below to introduce you to the meaning of each goddess as well as other astrological correlations that have a similar essence to the asteroid archetype. Each goddess will be explored through her myth and cult to appreciate her ancient role and contemporary meaning. The oracular meaning of the asteroid goddesses and heroines is based on the individual cult of the goddess. Once familiar with the presence of each goddess or heroine we will petition them for an oracle based on their position by sign and house in your horoscope.

Ceres, Asteroid No 1, was discovered in 1801. Ceres is closely aligned with the archetypes of Pluto and the Moon and especially strong when the Moon aspects Pluto. Her process may enter our lives when Pluto transits the Moon or the 4th house.

Pallas Athena, Asteroid No. 2, was discovered in 1802. Athena is sympathetic to the air signs especially the justice and strategy of Libra and the intelligence and objectivity of Aquarius. She is aligned with the masculine archetypes of

Mars and Uranus and close to Jupiter, her father's realm.

Juno, Asteroid No. 3, was discovered in 1804. Juno is the goddess of marriage and social customs. She reverberates with Libra and the 7th house. Her passionate side is reflected through the 8th principle of Scorpio and interchanges between these two astrological principles reflect the goddess.

Vesta, Asteroid No. 4, was discovered in 1807. Vesta is the spirit of the 6th house, the domain of the sacred in the everyday, the rituals of work and well being. Planets in Virgo respond to the archetype as do inner planets aspecting Saturn, the need for authenticity.

Hygieia, Asteroid No. 10, was discovered in 1849. The axis of health in the horoscope is the 6th-12th polarity. The Sun symbolizes the vitality and the ascendant suggests how we conduct that vital life force. Chiron is the archetype of healing. Hygieia is very much concerned with these principles.

Ariadne, Asteroid No. 43, was discovered in 1857. Ariadne's story plumbs the depths of the water houses. She leaves the familial terrain of the 4th house to be abandoned by her lover in the labyrinth of the 8th but awakens to her divine connection in the 12th. Neptune aspects to Venus or Mars may highlight these themes. Ariadne's process is revealed with transits to planets in the 8th house or Pluto transiting Venus or Mars.

Europa, Asteroid No. 52, was discovered in 1858. Taurus, Virgo and Capricorn and their rulers Venus, Mercury and Saturn represent the earth instinct. Of all three signs Taurus is the sign most closely aligned with Europa's passions and power. Planets in Taurus or the second house constellate the mythic pattern while transits through the second house or to Venus may evoke issues concerning values and resources

Pandora, Asteroid No. 55, was discovered in 1858. Pandora is a change agent and therefore may be sudden and unexpected like Uranus. Her curious nature and marking of threshold change is Mercurial, linking Mercury and Uranus. As an agent of transformation she has a Plutonic essence as well. Planets in Gemini or Mercury aspects to Uranus or Pluto highlight the nature of Pandora.

Mnemosyne, Asteroid No. 57, was discovered in 1860. The Moon records, reflects and reveals every heartbeat, breath and nuance of primitive life. Therefore the progressed Moon evokes memory as it progresses through the horoscope. Aspects between the Moon and Mercury as well as other planets aspecting these planetary archetypes reveal the process of feeling and rational memory.

Hecate, Asteroid No. 100, was discovered in 1868. Aspects to Mercury may signal how we might manage crossroads, our facility for change and adaptability. Crossroads in the life cycle are mapped out by the cycle of the slower moving planets while personal crossroads are reflected in the transits of the transpersonal planets to the personal ones. Note the South Node of the Moon.

Cassandra, Asteroid No. 114, was discovered in 1871. Cassandra revels in the world of Neptune - the archetype of the medial woman. Aspects between Mercury and Neptune, or Mercury in Pisces reflect Cassandra. Interconnections between Jupiter and Pluto may also ignite a similar pattern.

Medea, Asteroid No. 212, was discovered in 1880. Medea is similar to the archetypes of Pluto and Scorpio, as she understands the process of metamorphosis. Planets in the Eighth House or in aspect to Pluto may conjure up the potent magic of Medea.

Goddess Mythology



Mythology serves as a psychological record of human development recording the imagination and symbols of the culture. Mythic stories speak to the inner life as they deal with universal themes and truths illustrating the archetypal forces that influence the course of the human drama. In archaic societies myths offered an explanation of the world and its creation, the cycle of birth, growth and death, how things came into existence as well as how they disappeared. In contemporary times we have scientific explanations for many of the ancient mysteries, but myth is just as valuable to help us to imagine our own origins and invest our lives with meaning. Mythic themes stir the imagination and broaden the horizon of the individual's story placing it in a context of a larger story.

Mythology is the link between the magical phase of being when consciousness participates in nature and the rational phase when we are separated from the natural world. The magical phase embraces the culture of the Great Goddess when life is full of mystery and wonder and we are one with the natural order, not separated or expelled from it. In this phase all nature is sacred as all life is invested with the divine. The asteroids are surrogates of the Great Goddess and reconnect us to her culture. As emissaries the asteroid goddesses and heroines invest life with the sacred, value imagination and mystery and inspire ritual and sacrifice in order to reconnect to the wellsprings of her magical forces.

Following is a summary of their genealogy and mythic tradition. Let the myths resonate with your imagination and speak to you in their own way.

The Roman goddess Ceres is also known as Olympian goddess, Demeter. She is the daughter of the Titan Cronus and Rhea and mother of Persephone. She is the Corn Goddess who personifies the agricultural cycle of fertility and harvest, as well as loss and renewal through her daughter Persephone.

The Olympian goddess Pallas Athena was a daughter of Zeus, born from her father's head after he had swallowed Metis. The Romans referred to her as Minerva. She is revered as representing the wisdom of reflection and strategy.

The Roman goddess Juno is also known as the Olympian goddess, Hera. She is the daughter of the Titan Cronus and Rhea and mother to Ares, Hephaestus and Hebe. She is the goddess of Marriage and Social Customs who oversees the seasons of a woman's life.

The Roman goddess Vesta is also known as the Olympian Goddess Hestia. She is the daughter of the Titan Cronus and

Rhea and is the goddess of the Hearth who embodies sacred space.

Hygieia was the daughter of the Greek god of healing, Asclepius and the beloved goddess of Health. She is the sister of other minor healing deities and heroes including Panacea, Machaon and Podalirius. As the goddess of Health, Hygieia is the giver and preserver of well being whose function is to maintain a healthy relationship between body and soul.

The Cretan goddess Ariadne was from the Minoan dynasty. She is the daughter of King Minos and Queen Pasiphaë, granddaughter of Helios and Zeus. She is sister of Phaedra and half-sister to the Minotaur. As the wife of Dionysus, Ariadne embodies the sacred marriage having endured the trials of betrayal and abandonment.

Europa was a Phoenician princess, sister to Cadmus and matriarch of the Minoan dynasty, mother to King Minos and grandmother of Ariadne and Phaedra. She represents the creative and earthy process that supports and guides worldly success.

Pandora was the first woman, shaped by Hephaestus, to be the harbinger of a new age. She was married to Epimetheus and was the mother of Pyrrha. As a representative of the ancient ways of the goddess, Pandora brings the gift of hope.

Mnemosyne was a Titaness, a daughter of Gaia and Uranus, known as the goddess who personified the faculty of memory. As the mother to the Nine Muses she represents enchantment, inspiration and the power of remembering.

The goddess Hecate was the daughter of Perses and Asteria, the granddaughter of Phoebe, and a powerful goddess revered by all the gods. Later she became an attendant to Persephone. As an underworld goddess she was represented in her three-fold nature and was worshipped at the crossroads and as the guardian of transitions.

Cassandra was the daughter of Priam and Hecuba, the regents of the powerful dynasty of Troy. She was the twin sister to Helenus and sister to seventeen other siblings including Paris and Hector. From an early age she had oracular ability, yet no one believed her. Cassandra carries the feminine mysteries of divination even in a contemporary world that devalues the sacred tradition.

Medea was the Princess of Colchis, granddaughter of the Sun god, Helios and niece of the sorceress, Circe. Medea is the great witch of the Greek myths, knowledgeable in herbs, healing and the art of metamorphosis.

Ceres - The Earth Mother



*I died to mineral and plant became
Died from the plant and took a sentient frame
Died from the beast and donned a human dress
When by my dying did I ere grow less?
Rumi*

Ceres is the Roman agricultural goddess whose gift of grain, 'cereal', was distributed to mankind as thanksgiving for the release of her beloved daughter from the underworld and also as an eternal symbol of the continuity of life. Ceres is the goddess of agriculture who instinctually knows the cycle of loss, death and rebirth through her attachment to her beloved daughter.

The Roman goddess was modeled on her Greek counterpart Demeter whose central myth focused on the loss of her daughter, Persephone. It was this myth, which inspired the greatest initiation rites in the ancient world - the Eleusinian Mysteries. These mysteries re-enacted the terrifying journey of Persephone into the underworld and through these rituals both male and female participants faced their terror of death and became thankful for the gift of life.

Ceres, corn goddess, patron of farm life and vegetation is both an agricultural and underworld deity. She is an earth mother who presides over the cycle of fertility, birth, harvest, decay, death and rebirth. From the archaic period the goddess protected and insured the fertility and propagation of the crops and livestock. Her sanctuaries were placed near arable land, outside cities, where pilgrims would come to petition the goddess for a fertile crop and feast on the abundant gifts of food that the goddess provided.

Her myth was more ancient than her male contemporaries and reached back to the epoch when deities of the underworld (death) and the earth (life) were one. Ceres represents both loss and harvest and her classical story embraces each aspect in the myth of her daughter who becomes the Queen of the Underworld.

The myth of Ceres/Demeter and her daughter is a heartbreaking narrative of closeness, separation, grief and reunion, the motivation behind the establishment of the Eleusinian Mysteries. The brutal breaking of their attachment is the impetus that allows each woman to develop independently of one another into sovereignty over their own sphere. Since antiquity this poignant portrait of the mother-daughter bond has probably been the most cherished of all the Greek myths. The

classical myth is also remarkable as it places the feminine characters at the heart of the narrative with the male gods on the periphery honoring a sacred and profound feminine story. The Ceres myth was first told in a hymn to the great goddess Demeter.

Kore, the innocent maiden Persephone, was playing in a meadow gathering flowers when the earth rumbled beneath her and broke open. Suddenly from the chasm in the earth a chariot drawn by four black horses appeared. In the chariot was Hades, the Lord of the Underworld, who seized her. As she struggled to break free the chariot carrying them disappeared into the black hole. Demeter wandered aimlessly in search of her daughter. No mortal or god could help her with information about her daughter's disappearance. Finally after nine days she met Hecate, the goddess of the crossroads. Hecate heard Persephone screams, the only clue to the abduction.

Demeter raged and withdrew the gift of fertility from the earth causing a great famine. She also withdrew herself from the company of the gods and in disguise wandered amongst mortals unnoticed. Grief-stricken, depleted and withered, Demeter wandered to Eleusis where she met the daughters of the local king who pitied her and brought her home. Their mother gave Demeter the task of caring for her infant son. Demeter nursed him on ambrosia and nectar and every night she would baptize the infant in fire in order to render him immortal and safeguard him from the fate of the eternal cycle of life, death and rebirth. However, one evening the Queen interrupted Demeter in the middle of her ritual and screamed in fear for the boy's safety. At that moment the cycle of mourning was broken. Demeter cast off her old age, changing her size and appearance to reveal herself as the great goddess and commanded the king to build her a great temple and introduce her worship to the people of Eleusis.

However, Demeter was still furious at the abduction of her daughter and withheld the new crop's seed so the earth continued to be barren. Zeus intervened and demanded Demeter return to Olympus and fulfill her duties. Demeter refused. Finally Zeus in his anguish agreed to release Persephone from the underworld so the crops would grow again. Persephone was eager to be reunited with her mother. But before she left the underworld Hades gave her a pomegranate seed to ingest. Innocently Persephone took the seed and swallowed it now binding her eternally to this place. Having eaten in the underworld meant Persephone now belonged there.

Demeter and Persephone's reunion was ecstatic and both rejoiced at the sight of one another even though they knew they would not be together as in the past. As the mother, Ceres indicates the necessity to nurture a creative project even though that means letting it go. By relinquishing an attachment a phase of the cycle ends and prepares us for a new beginning.

Astrologically the goddess Ceres represents the feminine wisdom that acknowledges loss. Loss is intricately woven into the tapestry of life; attachment, separation and loss are part of life's greatest mystery. Feminine wisdom knows that grief is only one phase of the great wheel and mourning allows the process to be complete so that life may be renewed. Following is a portrayal of the goddess Ceres in your natal horoscope.

Ceres is in the 1st House

The goddess Ceres is prominent in the first house of your astrology chart, meaning that you are able to represent or understand the deepest qualities of women and all that is considered feminine. You bring fertility and growth to all the areas of life that you are involved with.

In a woman's chart, this position of Ceres means that you are likely to excel in some area of your life that typifies the very best womanly traits. This could be the more traditional role as nurturer and family caretaker. After all the goddess Ceres is an earth mother who presides over the cycle of fertility, birth, harvest, decay, death and rebirth. Others may

see these traits in you. On the other hand you could excel in a way that enables women to break through traditional barriers. You could be a leader in your field in a way that helps other women better understand the wisdom of the feminine. In today's society you can play a creative role in helping other women reconnect with their feminine power. Personally, you understand the rhythms of life and are able to work co-operatively and empathetically with others.

In a man's chart this position of Ceres means that you are likely to form a strong bond with a woman who significantly influences your life journey. Your youthful relationships may involve a sense of loss or separation, but as a mature adult you are able to appreciate the mature feminine traits of nurturing, wisdom, creativity and empathy.

Whatever your gender you may experience a period of loss or separation earlier in your life; however, this experience is likely to carve a deep well of understanding in your psyche. As a result you are a caring and supportive companion during times of bereavement, helping loved ones to face their grief and gain a new sense of hope. It is also possible that you understand the healing powers of music and the arts and perhaps become involved in these fields either as a hobby or profession.

Although you may consider yourself a conservative person, others may view you a little differently. You may have a traditional role in society, but somehow you stand out as someone who is prepared to protect your rights, your relationships and to stand up for the underprivileged. Your friends and colleagues may turn to you in times of trouble as a mediator or advocate. You need to choose your friends, marital partner and, where possible, colleagues, carefully. You are a true nurturer and divided loyalties could easily cause problems. You need to find the appropriate blend of closeness and freedom in each relationship. Finding time for your own pursuits is important to your sense of well being, particularly when these involve gardening, cooking or the arts, the domain of the goddess Ceres.

Ceres is in Leo

Although you are well aware that life has its serious moments, you prefer to concentrate on the lighter ones. Therefore you are good company. Friends and relatives enjoy your cheery nature. Of course you are not always bright and cheerful, but you do like to take care of yourself by focusing on life's pleasures. Beauty, fashion, the arts, and any fun activity all play a part in helping you remain upbeat. You are also keen to share these activities with those close to you.

Depending on other aspects of your birth chart you are likely to enjoy a pleasurable relationship with your mother, or a key mother figure. As a child it is likely that your mother encourages the playful side of your nature, perhaps even indulging your whims. You learn how to have fun and enjoy the world of make-believe, playing happily on your own or with other children. You share many traits with author J.M. Barrie's characters Peter Pan and Tinkerbell. As you grow older you are likely to retain many of these traits. In fact one of the few drawbacks of the placement of the goddess Ceres in the sign of Leo can be that you find it difficult to grow up, leave the family nest and make adult decisions. You need to 'grasp the nettle' and face life with maturity. Commitment can be rewarding. In fact you are likely to be surprised by the treasures that result from facing all the seasons and changes in your life.

You need to hear the echo of your own voice, the applause from your performance or the acknowledgment of a job well done. You are a creative soul and need to be interactive in an expressive way. Ceres supports all your efforts in expressing your self and encourages you to feel comfortable with your creativity.

Pallas Athena - The Wisdom Of The Warrior



*I celebrate the powers of Pallas Athena, the protectress of the city:
 Dread, as Ares, She busies herself with the works of war,
 With the sack of cities, with the battle-cry and with the combats.
 It is She also who saves the fighters that go to war and come back alive.
 Hail, Goddess, give us good fortune and happiness Pallas.'*
Homeric Hymn 11

The architectural masterpiece, the Parthenon, was dedicated to the goddess whom the classical Athenians cherished. Pallas Athena was their advocate for law and order, the teacher of household arts like spinning, weaving, and cooking, as well as their protector and defender.

As their goddess of war she helped the Greeks defeat Troy, the Athenians repel the Persians; as their goddess of useful and decorative arts she inspired them to build exceptional monuments and temples. The goddess of merciful justice transformed the law courts and at the dawn of the fifth century she inspired the democratic shift in Athenian politics. Athena was the revered goddess of the Athenians who celebrated her birthday each year with a great festival and procession through the Agora up to the Acropolis.

As a multi-tasked goddess many images are associated with Pallas Athena but it is the owl that reminds us of her wisdom. Her intelligence is 'bright-eyed' and sharp, focused on the immediate, located in the present, aligned with the head and not the instinct. Pallas Athena embodies the rational and encourages left-brain thinking. Her wisdom controls the instincts, learning to direct them into heroic pursuits to eradicate what is dark and primitive. She is civilizing and organizing, bringing culture and cultivation to mankind. Justice and law are part of her new order replacing retaliation and revenge.

Strategic, reflective and controlled her craft and skill is mirrored in the multiplicity of devices she offered man, the fertility of her ideas and the usefulness of her inventions and techniques. As Pronoia she is 'before knowing' embracing forethought and strategic thinking. As a warrior queen she was born from the forehead of her father Zeus, fully armored and mature, suggesting that the wisdom of goddess had been reborn into a new order. As father's special daughter Pallas Athena mirrored the rational intelligence and counsel of Zeus. Metis, the mother of Athena, was an ancient goddess of wisdom known as Wise Counsel or Cunning Intelligence. She knew the feminine mysteries, the intelligence

articulated by the heart and the inner world of instinct and intuition. From her Pallas Athena inherited another kind of wisdom: the wisdom of intuitive knowing often experienced in the belly as a 'gut instinct'. It is a knowing that may speak through symptoms or disease, through creativity or craft, or radiate through stillness and tranquility or even erupt in anger or hostility. It is a wisdom born out of an intimate connection between mind and matter, a fluid way of being that the ancient Greeks knew as Sophia.

Athena is a proud daughter born from a power struggle between her powerfully dominant father and her intuitively wise mother. Consciously Athena only knows her father's way and the new order. Born of man, like Eve, this myth is often cited when tracing the emergence of 'father-right' from the long held tradition of 'mother-right'. The daughter is now aligned with the sky father who colludes in rejecting the earth mother. The tables have turned in the familial pattern and now it is father and daughter colluding against mother, no longer mother conspiring with her youngest son against the father. When Athena emerges she reflects the need for logic and rationality rather than feeling and instinct. Her path follows the reason of the head, aligned with her father, not the impulse of the heart, the vulnerable feminine side that she has not been nurtured by.

Like Eve, Athena's feminine legacy is not so easily erased. Both their myths contain the image of the snake, a sacred symbol of their legacy of feminine wisdom, healing and regeneration. By the classical period Athena's wisdom became subjugated to Zeus. Shaped by the masculine wisdom becomes linear, logical and rational. Metis is no longer acknowledged as her other parent. The internal wisdom of cycles, intuitive knowing and the complexity of intrapsychic understanding becomes concealed under Athena's armor.

Athena is also associated with the arts of healing, health and regeneration. As Athena Nike she was the goddess of Victory, first victorious in war and later a victor on the sports field. Athena signaled victory and as a patron of heroes she was also known as the goddess of the near, as she was always close to the hero and a staunch supporter of the heroic. As the goddess of war and defender of her father's realm Athena became aligned with the hero as his guide and protector. In mythic portrayals of the hero, Athena stands behind or beside him as his staunch ally against the monstrous and dark forces. When Pallas Athena appears prominently in a birth chart she encourages us to be heroic and battle the regressive forces of our instinctual nature. It is necessary to reflect on the situation and not react emotionally, detaching enough to formulate a decisive plan of action.

In astrology the goddess Pallas Athena represents the reflection and meditation that develops out of the turmoil of chaos and uncertainty, helping us to become more strategic and deliberate in our actions. Metis is the valued intelligence that guides our instincts and plans strategically and arises into consciousness at exactly the right moment. Pallas Athena discerns and through reflecting on emotionally entangled situations allows consciousness to develop. Following are the house and sign descriptions of the goddess Pallas Athena in your horoscope.

Pallas is in the 12th House

You are wise, not necessarily in the ways of the modern-day technological world, but in the ways of the feminine psychic world. Classical civilization is more appealing than current society. If you had lived in olden days you may have been considered a witch, in the nicest sense of the word. You may even feel at times that you have been on this planet earth for centuries not just years. You have an affinity with the depths of the oceans, the heart of the forests and the canopy of constellations. You sense the underlying magnetic forces of the planet, and have an understanding of the movement of the tides and the planets. And yes, you are probably a little psychic, able to discern the thoughts of other people and perhaps even detect personal events and on a larger scale, oncoming earthquakes. In fact you may have difficulty tuning out the noise of society and people's worries and concerns. For this reason crowds are not a pleasant experience. You prefer the silence of the halls of learning, the isles of libraries, the sanctity of churches and the heart of

nature.

Whereas other people are aware of the laws of society you are aware of the greater laws - the laws of nature and the spiritual laws. Ancient wisdom teachings are second nature. Astrology, alchemy, and magic fascinate you. Herbalism, homoeopathy and other forms of natural healing also attract your interest. You are more interested in the feminine arts rather than orthodox medicine. Therefore you are more likely to work behind the scenes teaching or healing through unorthodox means rather than in a conservative institution.

The goddess Pallas in this position can be challenging when it comes to matters of justice. You have a strong sense of the underlying causes of injustice and feel compelled to communicate your perceptions. While you are unlikely to cause conflict you may unwittingly create some enemies along the way. Your lack of sensitivity to polite society means that you can, without meaning to, state your case at the wrong time or in the wrong place. Instinctively you will know when this has occurred and need to learn how to correct the imbalance that you have created. Otherwise it will come back to haunt you. At some stage in your life you may choose to take up battles on behalf of people less fortunate than yourself -those imprisoned unfairly, the sick and incarcerated or refugees.

The goddess Pallas Athena's wisdom helps you control your instincts and learn to direct them into heroic pursuits to eradicate what is dark and primitive. She is civilizing and organizing, bringing culture and cultivation to mankind. This is your gift.

Pallas is in Leo

You are a strategist, a charming one at that! You believe that charm is likely to win you friends and influence people and you are probably correct. On the whole you genuinely enjoy the company of your friends, family and colleagues. You have many creative talents and enjoy sharing your gifts with others. You have a good sense of fun. You like to spread joy and goodwill wherever you go, and appreciate others joining in on your escapades.

Your effervescent personality is a delight. However, as editor and reviewer Cyril Connolly wrote, 'all charming people have something to conceal, usually their total dependence on the appreciation of others.' Are you truly being yourself, or are you like an actor on a stage? Do you know when to show your true colors? Perhaps you rely too heavily on the expectations and opinions of other people rather than on your own sense of self worth. This is likely to be your challenge. You need to learn to appreciate your own gifts, to feel genuine joy over the achievements of other people but to pursue your own fulfillment.

You are a born creative leader. In other words you have the ability to bring out the best in other people, to motivate them to use their gifts and to follow their dreams. Your positive outlet is an inspiration. Your talents may be linked to the entertainment or hospitality industry, the arts, fashion or decorative arts. You may also enjoy teaching young children, helping them reach their full potential. Beauty may be important to you. Again you need to make sure that you place the same emphasis on inner beauty as you do on the artifice of beauty products and appearance. When your true inner joy shines forth then you are a force to be reckoned with!

Juno - Socializing The Soul



*'And wheresoever we went, like Juno's swans,
Still we went coupled and inseparable.'
As You Like It, Shakespeare*

Juno Regina shares the honor of the highest deity in the Roman pantheon as queen next to her husband-brother Jupiter, king of the gods. Each woman had their own guardian spirit named Juno, who guided their transitions into the stages of motherhood and marriage. As a light bringer she was also invoked for protection during childbirth. As the goddess of marriage her Roman name Juno was the derivative of June, the season of the bride. Women celebrated her annually in the festival of Matronalia. By the Roman period Juno had become emblematic of the woman as wife and citizen presiding over social customs and duties. In earlier Greek myths Juno was a powerful goddess in her own right known as Hera, the adored feminine deity of many powerful city-states.

The derivation of Hera's name may be related to Hora or season, as she is custodian of the seasons of a woman's life. On the Olympian pantheon she was the goddess of marriage and embodied social ritual and custom. At her cult in Argos young girls ran races to prepare for their marriage and the rituals of womanhood. In the Greek myths Hera was a wife and unlike her husband Hera does not have affairs. However, in Greek myth Hera also seeks revenge upon her husbands' liaisons with others. By the classical period the tales of Zeus and Hera rival contemporary soap operas where the cycle of betrayal, outrage and revenge is the central plot. Hera consistently plots revenge against Zeus' lovers and children from these affairs. However, there was an earlier time when the Olympian couple was not always locked in power struggles or scheming and bullying each other. This was when they first fell in love in the palace of their aunt and uncle where they were being hidden, protected by their mother Rhea from the familial wars that were raging with their father. Here in the great palace beneath the sea, they consummated their relationship, a relationship that was to remain secret for nearly 300 years. Underpinning the later myths are fragments, which reveal Hera was an ancient goddess before she became aligned with her brother in a sacred marriage.

Epithets of Hera such as 'cow-eyed' refer to her earlier association with the earth and agriculture, while her epithet 'of the white arms' may link her to an association with the Moon. She is often depicted in three phases as the maiden, the fulfilled and the solitary, a trinity of aspects represented by Hebe, Hera and Hecate. Hebe was the daughter of Hera and the cupbearer to the Gods who became married to Heracles after his ascension to Olympus. In this aspect Hera is the maiden, the youth and the aspect of the feminine that retains her virginity, even in relationship. The central phase was

motherhood, wifedom and a woman of power. Local folklore suggested she bathed in the streams of Argos where she was able to regain her virginity lost in the marriage with Zeus. Hecate was associated with the final phase embracing Hera's aloneness and need for solace. At times Hera would leave Zeus to go off on her own to pursue her needs for privacy, renewal and worship.

Hera was indigenous to Greece long before Zeus was triumphant. The cult of Hera may have been so powerful that unlike the other goddesses Zeus was unable to be dominant, settling instead for an equal relationship. Her cults on Samos and in Argos are linked to the prehistorical period. On Samos one of the first mammoth stone temples of the archaic period was built in honor of Hera. Similarly her temple at Olympus predates the magnificent one built for Zeus. No doubt Hera is an older goddess like Demeter and Hestia, her sisters who were born to Cronus and Rhea before their brothers. However, to incorporate Hera into the politics on Olympus she became the wife of Zeus and mother to his children.

Another mythic fragment, which suggests Hera is a powerful ancient goddess, is her link to Heracles. Even though their relationship is estranged Heracles is named for the great goddess. His name literally translates into the glory of Hera. Hera whose name closely resembles hero is aligned with the greatest of all heroes, Heracles and plays a potent role in many heroic sagas. Their antagonistic relationship ironically spurred him on to become the greatest hero and ironically myth depicts Hera as his mother-in-law. No longer the object of her scorn Hera has challenged Heracles to become the hero. As mother-in-law she models a strong and uncompromising woman who demands the hero be the best man for her daughter.

Juno and Hera are the composite that portray the seasons of a woman's life as well as the evolution of woman's roles. The spirit of Juno in contemporary woman has new power and possibilities and the placement of the goddess in our horoscope is an invitation to challenge the constructs of the social roles that are inhibiting for us. As a partner and equal Juno is supportive, enterprising, challenging and confronting helping shape potentiality into reality.

In astrology the goddess Juno represents the status and achievement in the world that are intricately aligned with social customs and tradition. Equality in relationship is necessary at all stages of the life cycle to insure both inner and outer fulfillment. Juno's ancient legacy is equal relationship and through her archetypal experience you can become aligned with your heroic self. Descriptions of the goddess in your astrological chart follow:

Juno is in the 8th House

Marriage is a deeply personal and significant union in your eyes. You value love, commitment and the promise of marriage. You long to make a lasting commitment in an equal relationship and want to exchange the vows of commitment in an official ceremony. It doesn't matter to you whether or not this ceremony is performed in a traditional or unorthodox ceremony, but you do want the comfort that the ritual of making vows provides. Once a vow is made then you are determined to keep it. You expect the same from your spouse. You have a great capacity for being honest, loyal and trustworthy in your intimate relationships but this also needs to be experienced from your partner.

You enjoy the intensity of romance and passion at the start of your marriage and the excitement of setting up a home together. However, much to your own chagrin, you find that familiarity can indeed breed contempt. The daily grind of living together soon loses its shine. Your challenge is to keep the flames of romance burning, and to find meaning within daily acts of love and kindness. Otherwise you soon become bored, and if this is the case you are likely to create conflict simply for the effect of escaping boredom or look for trouble where it doesn't exist. You may start to doubt your partner's commitment, either because you realize that your behavior is not conducive to loving relations or because you are suspicious of your spouse's behavior. Possessiveness and jealousy, either your own or your spouse's, can cause

further problems. The birth of a child in this scenario is unlikely to prove a salve to your problems. In fact it is more likely to cause further tribulations. Love, loss and betrayal can become themes in your marriage if you remain unconscious of the need to keep the relationship alive. You need to be mindful of not turning your love life into the soap operas that you enjoy so much.

On a more positive note, you learn much about the seasons of life through your marriage. The act of commitment to another person reflects your honorable intention of remaining true to yourself and another person. There is great beauty in your promise. You can learn to accept your own and your spouse's failings. In doing so, this strengthens your resolve to live your own life to the fullest extent. You also learn the true meaning of passion. As famous author Mark Twain once said, '*Of the delights of this world man cares most for sexual intercourse, yet he has left it out of his heaven.*'

Eventually you can attract a partner who is supportive, enterprising, as well as challenging and confronting in positive ways.

Juno is in Pisces

You are an idealist when it comes to marriage. From a young age you are seeking the perfect somebody to help you feel complete. Romantic illusions abound from a young age. As a child you may even begin this process by having an imaginary friend, as the perfect antidote to the harsh realities of growing up. As you grow up you seek the perfect marriage partner. The trouble is you are very good at creating illusions. You are a sensitive and understanding soul, ready to see the good in everyone. You are a savior in the best and worst sense of the word.

You can really help and support your loved ones, but you can also try to save those who are not worthy of your efforts. You see everyone through rose-colored glasses. This can be a positive trait, but it can also be misleading when it comes to love and romance. You need to be very careful to make sure that you are really seeing your potential mate in their true colors. You fall deeply in love, but how much of this is illusion? Ask your more practical friends for their opinions, and listen! If you marry someone unsuitable then you are likely to be very miserable, because you have such difficulty letting go and moving on. You really want to see the best in a person and to believe in your marriage, but you are in danger of becoming a victim of abuse if you marry the wrong person. Disillusionment is the other side of illusion.

The goddess Juno is asking you to have faith in yourself, to follow your own path, to pursue your own spiritual or artistic interests. Once you have truly built on your own self-esteem, and discovered your own self-worth then you can attract a worthy mate. Religion, orthodox or unconventional, may teach you some valuable lessons. Again you need to be wary of losing your sense of self in other people. Make sure that you join reputable spiritual or religious groups, but avoid cults or any group that requires you to sacrifice your own sense of self. Once you have a strong sense of your own beliefs and values then you can begin to express your own spiritual values or follow your own artistic pursuits. You can also begin the search for a meaningful marriage, someone to share your faith and interests. From a strong sense of self you can begin to love unconditionally, both yourself and your spouse.

Vesta - The Inner Life



*'Leave those vain moralists, my friend, and return to the depth of your soul:
that is where you will always rediscover the source of the sacred fire which so often inflamed us with love of the
sublime virtues;
that is where you will see the eternal image of true beauty, the contemplation of which inspires us with a holy
enthusiasm.'*

Jean-Jacques Rousseau

The cult of the Roman goddess Vesta was connected to the Greek Hestia. However, the Roman archetype had considerably altered from her Hellenic counterpart. By the Roman period the sacrament of virginity was liberalized, no longer conceptualized as a psychic state but now institutionalized as a spiritual way of being. Priestesses of Vesta, known as Vestal Virgins, served the goddess for a period of thirty years. While the position was privileged it also was one of great piety, devotion and responsibility. Vestal Virgins tended the sacred flame and guarded the Palladium, the secret objects brought from Troy to preserve the memory of the ancient city and protect the new satellite city of Rome. However, in ancient Greece Hestia was the embodiment of an internal and sacred space not a religious institution. Vesta's heritage reaches back to the traditions of honoring the authenticity of the inner life as symbolized by the spirit of the sacred flame, not a system of regulations.

In ancient Greece the goddess received the highest respect. Acknowledged as the deity mankind must first honor when feasting and drinking the goddess embodied grace and virtue. Veiled and virginal her sanctuaries were places of refuge, asylum and political peace. Constant, focused and disliking change Vesta is the hearth, a symbol for both the center and the focus of the home as well as the metaphor for family life and the family circle. As custodian of the hearth she is central to psychic life representing the sacral center, the goddess who honors sacred space and protects holy images. She embodies spatiality, conferring safe places to congregate, mediating soul by giving it a hallowed place to be acknowledged. As a virgin (unto herself) goddess Vesta is the custodian of soulful space personifying the stillness at the center of our busy everyday lives. As goddess of hospitality she also welcomes travelers across the threshold offering sanctuary and hospice. Vesta is the continuity of family life and the coherence it brings to our everyday experiences. Vesta was the first-born child, the first devoured by Saturn and the last one to be disgorged from his belly. Therefore she represents the beginning and the end, the alpha and the omega, the eternal cycle. Vesta is not a part of the outer rim of the cycle but situated at its center, personifying stillness, discretion, centering and immobility, aspects of her Greek counterpart, Hestia.

Few Greek myths remain of Hestia; she is rarely personified, no statues or temples remain, yet at times in the archaic period she was the most honored goddess, worshipped at the center of the city and the center of the Greek household. By the classical period Hestia was not included as one of the twelve Olympians having been replaced by Dionysus. Hestia and her brother Hades are the only two siblings who remain detached from the Olympian family dramas and feuds. Unlike their brothers, Poseidon and Zeus, or their sisters, Hera and Demeter, they are not identified with their family of origin or their siblings. Their places are internal, interior and introverted. Few images or alters survive as reminders of their worship or importance in cult. There were virtually no temples erected to them and they were seldom represented in art, sculpture or vase painting. Neither were they parents to heroes like their siblings. As gods of place both Hestia and Hades have been re-placed and dis-placed which are potent clues as to what we culturally and psychologically have done with these archetypal energies. In a modern context this place of Hestia, as a metaphor for the hearth of inner life, has become dis-placed, re-placed by the rush and busyness of the outer world. When the inner life is sidelined and banished to the fringes of society, anxiety, terror and panic can no longer be constrained in the community. Hestia reflects the need for solace, quiet and retreat into the inner sanctuary of the Self.

As an image of center, Hestia is not personified or remembered by statues or temples but manifests through the sense of peace. She is the central point; the meeting place the fires of the home, the hearth, the Omphalos as the symbol for the center of the Earth. In antiquity her sanctuaries were non-warring zones, places of political peace. Plato remarked, *'when the Gods warred, only Hestia did not take part'* that characterized the goddess' propensity to non-involvement. In the earlier myths of Hestia she resisted the advances of both her brother Poseidon and her nephew Apollo and was honored with remaining eternally virginal, symbolic of her attachment to the inner life. She is the aspect of self, which can never be violated or abused and always able to access the soul. Hestia is central to psychic life and expressions like 'can't settle down', 'off center', 'being off base' remind us of being out of touch with Hestia. As the hearth she is a guide to the inner life and the central image around which soulful images can constellate. She represents sacred space, the meditative moment the soul of place and the feeling of home.

In astrology Vesta is the inner instinct that honors soul by giving it a sacred place, an altar, a quiet moment. She represents hospice and offers hospitality to the aspects of self that feel displaced and dislocated. As the hearth light she offers stillness, quietude, meditation and solitude in the midst of the everyday. The inner life is the container for anxiety and despair as well as a refuge from the pollution of daily life. Below are descriptions of where Vesta is to be found in your horoscope, the spheres where she seeks to be honored in your life.

Vesta is in the 12th House

There is a real temptation for you to spend much of your time on your own, withdrawn from society. This is fine if you are able to live in a religious community dedicated to prayer and meditation; however, this is not likely. The ability to live like a hermit in the hills is a rare one. It is more likely that you are required to deal with the challenges of living in an active and productive society. You are likely to be passionate about a solitary pursuit - reading, meditating, prayer, communing with nature to name a few. A limited amount of time relaxing in front of a television may also help recharge your batteries. Friends may misunderstand your needs, amiably joking about your need to "navel gaze" but contemplation inspires you. As mentioned previously there are limits. Your gifts need to be shared with others. Perhaps working in an institution such as a hospital, prison, the armed forces, could provide the discipline that you need to be an active member of society. On the other hand you may enjoy a role as a spiritual teacher.

Ideally other aspects of your birth chart will balance this placement of the goddess Vesta. If this is the case then perhaps you will have a good balance between pursuing solitary pursuits and then sharing them through various mediums with others. For instance you may spend much time on a creative project that you can then publish, sell or teach when it is

completed. You are in touch with a wellspring of creative possibilities.

Another indication of this placement of Vesta in the 12th house of your birth chart is a fascination with the rites of initiation in various religious traditions, as well as possible involvement in secret societies. On the negative side you need to apply discipline and restraint to any involvement in such matters, otherwise you could attract forces that work against you. In ancient astrological times this would have meant secret enemies and the possibility of incarceration. On the positive side this can lead to a deeper understanding of the spiritual and hidden elements of society. You may also build positive links with other people through your involvement.

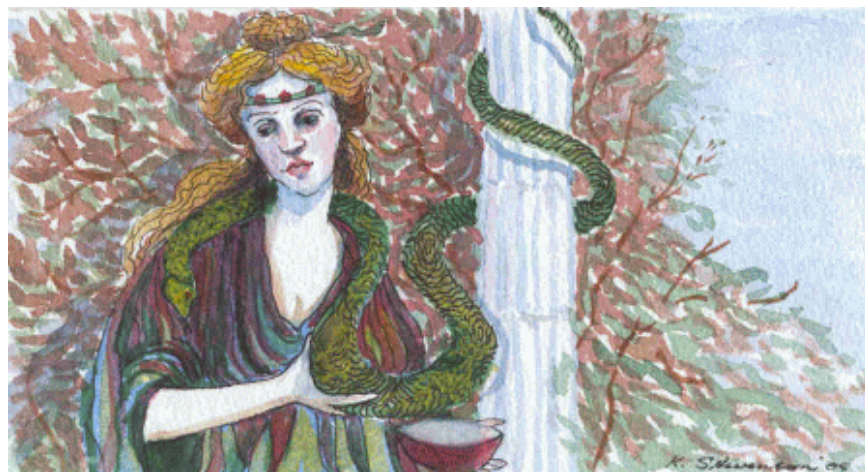
Vesta is in Cancer

You are well aware of the role that families play in society as well as both the positive and negative effects that families can have on individual members. This is also true for society as a whole. You are able to unconditionally accept family members, foibles and all. However, this is not always true for other people. You may or may not have suffered at the hands of your own family, but you are aware that love not judgment is vital for the growth of human beings. Families are the building blocks of society in your opinion. Therefore it is essential that people have a firm foundation on which to build their lives.

Acceptance of other people's values and family systems is also vital. These are the matters that motivate you to right the wrongs in some area of society. You are committed to supporting your own family members, even at great personal cost to your own desires. Education for future generations is one of your catch cries; however, you also need to nurture yourself. You are also committed to helping the less privileged members of society, especially disadvantaged children or animals. You may move away from home to achieve your goals, to a different neighborhood or even another country. You need to be wary of becoming disillusioned, as your own high ideals may not always be attainable. If you work with disadvantaged animals, children or families then you may find that your enthusiasm may be dampened unless you withdraw occasionally to stoke your own fires.

You have a kind heart and true purpose to show and teach compassion. You are a real treasure for your loved ones. A foundation stone for your sense of security and well being is the time you dedicate to the sacred. Therefore in the midst of administering to family and friends it is wise to remember your need for quiet, contemplation and peace.

Hygieia - The Soul Of Health



'Health, greatest of all the blessed gods, may I live with you for the rest of my life'
Hymn to Hygieia, Ariphron

In the ancient Greek sanctuaries of healing statues of Hygieia, the goddess of health, reminded the pilgrim of the archetypal quest for wholeness and well being. Adorned with a simple garment Hygieia was often represented as youthful, radiant and smiling, attributes that are companions of health. Either she is holding or feeding a snake. Carrying a bowl of food or water Hygieia is generally represented tending the sacred snakes that were housed in the temples on the sanctuaries of healing. Sometimes she is presented holding a wreath of laurel, combining victory with health, or other plants known for their medicinal properties, a motif that links her to an ancient tradition of woman healers, herbalists and midwives.

Hygieia's intimate relationship with the serpent recalls her link to the ancient goddesses of healing and nature. Earth and Mother goddesses were accompanied by serpents and the ancient belief was that they transmitted the power of healing and prophecy. As a symbol of both regeneration and divination serpents were sacred to the goddess who gave them sanctuary in the bosom of the earth. Later the cult of sacred snake was adapted and serpents were included in the rituals at the sanctuaries that offered healing and spiritual guidance. The ancients also saw the sacred serpent dwelling in the body and when awakened it could offer illumination, vitality and the radiance of well being. As nature became less mysterious snakes became demonized, no longer transmitting the ancient wisdom of healing but transporting demonic and darker forces.

Hygieia nurtures and tends the snake revering its sacred power to rejuvenate and shed its old ways. She celebrates its dark, earthy force and recognizes the divine mystery of illness and health. Like her ancient ancestors, Hygieia honored the union between the natural and supernatural worlds knowing that health and well being depended on bringing them both into a cohesive whole. Goddess wisdom also knew that all of nature was animated by spirits that could be petitioned through magical and religious ritual in an attempt to restore equilibrium and well being. Hygieia is the modern surrogate of the ancient goddesses who honor the great mystery of healing.

To the Greeks Hygieia personified health, that mysterious amalgam of well being, wholeness and happiness. She emerged in the classical period when the cult of Asclepius became widespread and flourished throughout the Graeco-Roman world. Hygieia was mainly represented as the daughter of Asclepius, the Greek god of healing, although

sometimes known as his wife. Her numerous statues equal those of Asclepius and in the cult of healing she was revered and equal to the god himself. Interestingly the popularity of temple medicine practiced at the sanctuaries of Asclepius paralleled the growth of rational medicine that had emerged through the teachings of Hippocrates. Hygieia stands at the crossroads of magico-religious healing rituals and contemporary medical practice, holding the tension between the two but allowing each to co-exist. She embraces wholistic healing in every manifestation as she is dedicated to the pursuit of health.

In the ancient community disease was portrayed as a possession by a demon, the intrusion of a spirit or the curse of a god. In the cult of Asclepius illness was seen to be more the call of the divine, the voice that echoed the split between body and spirit. It was the illness that called the pilgrim to the temple to restore equilibrium and well being. At the temple the patient would prepare for an encounter with the god often by fasting, bathing or meditating. Then the patient was escorted into the temple where they would lie down and fall into a deep sleep wherein the god would appear to them in a dream. Once contact with the god had been made through the inner process of the dream the patient would be restored to health. In the healing sanctuaries of Hygieia health was evoked through contact with the divine in the inner sanctuary of the soul. Yet synchronous with these practices were medical doctors who suggested that disease was a natural occurrence and not of the god's making. Hence Hygieia eventually became associated with mental health and well being as rational medical doctors gained a stronghold on the health of the physical body.

When Hygieia is strong in a birth chart we are reminded that health is the alignment of body and soul, heart and mind, outer success and inner peace. One at the expense of the other constellates dis-ease in the temperament that may manifest as a physical symptom, mental anguish or emotional pain. Hygieia is the personification of Health who calls us into the inner sanctuary of the soul to restore health and regain equilibrium. On a divinatory level Hygieia will be chosen when the healing of a situation is imperative. Rational healing is not the only answer. It must be accompanied by attending to the root cause, which ultimately is the illness in the soul. In a psychological sense Hygieia is soul of health, the urge to attend to psyche and its needs by nurturing our deeper urges and impulses. Feeding the snakes is a metaphor for nurturing the dark and mysterious aspects of the soul and attending to the unconscious.

In astrology Hygieia represents health that is forged through the alliance of the natural with the supernatural, the right brain with the left, the inner world with the outer, the serpent with the soul. Hygieia reminds us that health is an archetypal image embedded in the psyche. When the soul is not nourished or attended it speaks through illness and disease. The placement of Hygieia by house and sign that follow are where the goddess seeks her expression in your life.

Hygieia is in the 12th House

Two millenniums ago Cicero suggested that diseases of the soul were more dangerous and more numerous than those of the body. Hygieia symbolizes the link between the soul and bodily health, and this is especially highlighted when the goddess occupies the 12th house. Health of the soul suggests enough time and space in the busy day for nurturing the inner life, periods of retreat to reflect and meditate and ample occasions to find meaning in the midst of the mundane. Hygieia invites you into her sanctuary where inner peace, harmony and well being can be restored through rest and retreat. To Hygieia health is achieved by maintaining a holistic balance; being in your 12th house Hygieia suggests that health is also promoted through the attention to dreams, the involvement with images and the respect of the unconscious. With Hygieia in the 12th the need for soul space is revealed through feeling 'out of sorts' or unwell as the goddess summons you to attend to the internal world. In many ways the body is the reflection of the inner world and illness the living dream projected onto the physical self. Illness is the soul's way of making the need for creativity, inspiration and imagination conscious. Hygieia longs to be able to express its urge for wholeness through a creative form or an imaginative project.

In the 12th we encounter ancestral attitudes and images. With Hygieia in this house certain familial attitudes towards health, which may not be appropriate or beneficial for you, may be deeply engrained in the ethos of the family. To begin to support your individual and unique health regimes it may be necessary to move away from familial attitudes and values concerning healthcare, creating reactions and consequences from other family members. Healthcare and healing is a family issue and there will be many stories, which have shaped the family myth around helping, hospitalisation, and healthcare in general. In the extended family there are probably other nurses, healthcare workers or medically trained individuals who have chosen the calling to serve through healing.

Your call to healing is very strong and at times may have overwhelmed your sense of self. You seek your own wholeness through working and healing others. However, you are also sensitive to losing yourself in the pain and illnesses of others. As there is a tendency to lose boundary between you and those you care for it is important to be aware of not becoming enmeshed with those who are ill, victimised, and in need.

Hygieia is in Cancer

No doubt the combination of Hygieia, the goddess of health, in Cancer, the sign of care taking, emphasizes the need to take care of your health. It may also suggest that the route to your well being is not only the care of the self, but also through your innate capacity to mother and nurture others. You may feel called to one of the health care professions, especially through caring for others when they are vulnerable. Whether you work in physical or mental health fields your interest in healing and caring for others was forged out of your own familial experiences. You also have an instinct and interest in early child development and the health care of the young. For you, a healthy family life is a priority.

For women this placement may address the instinct to mother and the healing that is constellated through this experience. While you were pregnant or during the perinatal period a health crisis may have developed, alerting you to a larger issue of health. Perhaps pregnancy or being a mother altered your attitudes to health and well being, or simply being a mother has thrown you a new lifeline and you are radiant in your role as mother. While it suggests that well being is akin to mothering it may also imply that your own healing journey was literally connected to your mother or the familial legacy of the feminine. Caring for others was a theme in the familial environment but how fate arranged this in your own experience will be unique. On a psychological level your healing journey may have started in the role of daughter or son to a mother who herself needed care taking. Or your own sensitivity to caring for others was borne either out of your own feeling of neglect or, to the other extreme, watching your mother administer to those in need.

The goddess Hygieia draws your attention to the fluctuation of your feelings and moods as there is a strong connection between the way you feel and your own physical and mental health. Your tendency to absorb the feeling atmosphere around you and not express your own feelings, especially when hurt or offended, leaves you weakened and prone to feeling unwell. The unease or bloating in your stomach alerts you to the need to express your feeling in order to regain balance. Weight and water retention are another way the goddess draws your attention to caring for yourself and urging you to express your authentic feelings.

Ariadne - The Labyrinth Of The Soul



'To be always fortunate, and to pass through life with a soul that has never known sorrow, is to be ignorant of one half of nature.'

Seneca

Daughter of the great dynasty of Knossos, Ariadne's fate was overshadowed by the curse that plagued her family. In the guise of a great white bull, Zeus had abducted her grandmother Europa from Phoenicia and brought her to Crete. Her mother Pasiphaë had also become enamored by a great bull. Ariadne participated in the family fate: as Pasiphaë's daughter her lifeblood was impassioned and as Europa's granddaughter her destiny was to abandon her ancestral home.

Poseidon cursed Ariadne's family when her father Minos refused to sacrifice his most magnificent bull to the god. Spurned, the god aroused Pasiphaë's shameful lust for the impressive bull that became embodied in her bull-son, the Minotaur, human from the shoulders down. Banished into the labyrinthine blackness below the palace Ariadne's half-brother, the Minotaur, fed on sacrificial children sent from Athens every nine years. Heroic Theseus was one of fourteen youths sent to Crete to face death at the hands of the Minotaur.

When Theseus arrived to participate in the bull games Ariadne's passions were ignited when she saw him for the first time. Beguiled by the handsome hero, Ariadne devised a plan for Theseus to slay the Minotaur and return safely through the dark tunnels of the labyrinth. For her complicity Theseus promised he would marry her and take her away to Athens. Unconscious that her fate was enmeshed with the god Dionysus and not Theseus Ariadne set upon her course to help her lover and in turn betray her family.

Through the dark labyrinthine tunnels Theseus crawled, quietly, mindful not to make sounds that would waken the sleeping Minotaur. Wrapped around his wrist was a ball of yarn, tied to the pillar at the entrance of the maze, which unravelled as he made his way through the dangerous tunnels. Ariadne's thread was the umbilical cord that connected him to the outer world and guaranteed his return after he killed the Minotaur. That evening Ariadne escaped with Theseus. In the dark Mediterranean night they set sail for a victorious return to Athens. Leaving behind her father and sacrificing her brother she surrendered to the passion that burned inside, the rapture only Aphrodite could inspire, a similar fervor that had inflamed her mother and grandmother. The next night Ariadne and her lover reached the island Naxos. Exhausted by traveling and fatigued from the emotional turmoil that had preceded their escape they collapsed into a deep sleep. But as the rays of the morning sun lit her face Ariadne awoke to discover her lover had vanished. At

the edge of the shore she saw the sails of his ship in the distance. Athena had carefully woken Theseus before dawn, setting him on his course home without Ariadne. Abandoned, betrayed and used, Ariadne descended into her own complex world on the shores of Naxos.

Blinded by her passions Ariadne had been complicit in her abandonment. In betraying her family to follow her hero she had set the cycle of betrayal in motion. Projecting her heroic self onto Theseus had left her separated from her own center. Alone Ariadne was forced to connect with her internal world. At this threshold Ariadne experienced an epiphany of Aphrodite the goddess who ignited the passionate fires that led to her suffering. Appearing to Ariadne the goddess revealed her true fate: she would wed her real soul mate, the divine Dionysus. Dionysus celebrated their sacred marriage by offering Ariadne the crown as the symbol of their intimacy and eternal union.

Ariadne's myth portrays the heart's painful journey when connection to the inner self is severed and sacrificed to the lover. Ariadne followed her lover's course rather than her own internal labyrinthine journey, losing her genuine direction. Using the thread, the symbolic connection to her inner core, to serve the hero Ariadne lost contact with her own inner wisdom. Abandoned she was no longer able to define herself exclusively through a partner; therefore a more authentic sense of self could emerge. The painful process of confronting her naïve trust and blind faith in Theseus enabled her renewal and redemption. In psychological terms a more divine sense of union is possible when projections onto the other are consciously relinquished. Dionysus embodies a woman's masculine spirit enabling her to define herself in terms of her own needs and not through someone else.

When Ariadne is prominent in the birth chart she reveals the course of the heart encouraging the individual to acknowledge that the threads to their inner self are tenuous and must be honored in relationship. Ariadne celebrates a more intimate connection with the heart, whether that is through a personal relationship, a new creative endeavor or a new course of life.

In astrology Ariadne represents abandonment as an archetypal process that strips away the mind's illusions in order to hear the calling of the true self. Confronted by the painful reality of being left the individual is forced to relinquish their hopes and fantasies in order to awaken to the authentic path of the heart. Ariadne embodies the soul in relationship that must first experience the painful course of the labyrinth before a divine connection can be realized. Following is the astrological thread that Ariadne weaves through her house and sign in your horoscope.

Ariadne is in the 6th House

As a young child you enjoy the ins and outs of daily life - home, school and then perhaps higher education. However, you do not enjoy any major changes in your young life and these are likely to occur. For instance if your parents separate then you are likely to suffer a real sense of loneliness. On the other hand your family may move neighborhoods. This is also somewhat devastating as you are forced to change schools and friends. You feel isolated, cut off from all that is familiar. As a result you are forced to search within for a sense of belonging. This can be positive, encouraging a newfound independence, but it may also leave its emotional scars. You may find it difficult to form intimate, long-lasting relationships. Independence is a great attribute but you also compromise and respect your loved one's need to influence your life.

As an adult all of your co-workers and friends fall in love, marry, co-habit and bear children, but you may not feel so inclined. Of course many of your friends may then divorce, fight over property and children and face the long, lonely journey of being single but still you feel as if you are missing out. So if you do feel that you are missing out on some important aspects of your personal life, you are probably working too hard, losing yourself in your job, taking care of the daily details and your co-worker's problems rather than facing your own truth.

At some stage in your life you need to take time out, to reclaim your own dreams and wishes. Daydreaming may not be part of your nature, but you need to face the truth that work is not everything. You need to embrace all aspects of life. It is possible that the practises meditation, yoga, prayer and other spiritual pastimes may help inspire a renewed sense of self. You may continue in the same vocation, but now you have a sense of purpose and fulfillment. Peace permeates your life.

Ariadne is in Capricorn

You have a tendency to seek security as a way of boosting your self-esteem. You work hard to have a secure job, a comfortable house and a respectable marriage. You also like to have money in the bank and a good retirement fund. You worry when your environment or relationships change, preferring to keep everything as stable as possible. The difficulty is that, by trying to maintain the status quo, you eventually lose the very thing that you seek - a strong sense of self. One day you may realize that all of your hard work may well have been in vain because you feel empty, unable to really enjoy the fruits of your labors. You need to consider making changes. A journey of self-discovery is in order.

If you try to avoid this journey then you may be forced to let go of your material acquisitions through circumstances that seem to be beyond your control. You need to rediscover a sense of passion and face your fears. Change can be liberating. Slowly but surely you can gain a deep understanding of your own true nature and seek new paths of self-expression. Instead of building castle in the sand you can rebuild your life based on passion, flexibility, joy and spiritual values. The goddess Ariadne celebrates a more intimate connection with your heart, whether that is through a personal relationship, a new creative endeavor or a new course of life.

Ariadne's thread binds your heart to the world outside your home and family. Part of your journey will be to negotiate the labyrinth of possibilities in the world until you find your vocation. When you do you, you will also find your own autonomy and authority, for you are the only author of your life script, not your parents or your partners.

Europa - The Soul Of The Earth



*'On a beach in Sidon a bull was aping a lover's coo. It was Zeus.
He shuddered, the way he did when a gadfly got him.
But this time it was a sweet shuddering.
Eros was lifting a girl onto his back: Europa'
The Marriage of Cadmus and Harmony, Robert Calasso*

Underneath the Cretan palace of Knossos hidden in a labyrinthine chamber lived a bull-man, the Minotaur, the shameful shadow of the Minoan clan. Two generations earlier the story began when Zeus shape-shifted into a beautiful white bull to seduce a young Phoenician princess named Europa. Like the gods of the old religion Zeus took the shape of a virile and magnificent bull to mesmerize the innocent girl who was unaware that her destiny would instigate the founding of two great dynasties as well as the continent named for the virgin Zeus had abducted.

Europa had been playing in a field gathering spring flowers to make garlands when she became enthralled by a large charismatic bull that meandered into the meadow. Possessed with desire to know the bull, she moved closer. Zeus, the bull-god, knelt before her gently beckoning Europa onto his back. She dared to climb upon him, and then slowly he took her step-by-step across the meadow towards the sea. With the power of a great god, the bull strode the waves across the sea to Crete. Europa clung tightly to the powerful bull, as she rode farther and farther away from her homeland. Zeus had made his conquest. He took Europa as his lover, fathering three children by her; one was Minos the founder of the Cretan dynasty.

Europa's father summoned his sons and instructed them to search for their sister and not to return home until the task had been accomplished. Cadmus set out on the quest, eventually journeying to Delphi to ask the oracle where he could find his sister. The oracle advised Cadmus to relinquish the quest for his sister, as his fate was to found the city of Thebes, not find his sister. In order to find the location of Thebes, he must follow a cow until it came to a place where it would lay down due to exhaustion. Europa had been abducted by a god disguised as a bull; her brother Cadmus is led by a cow to his destiny. Both siblings' destiny is to found a great dynasty guided by the commanding and enterprising bovine instinct. Like the zodiacal sign of Taurus the bull symbolizes inherent resource and power and the ability to either cultivate land or build structures that create wealth.

Europa's son Minos claimed the throne of Crete with the blessing of the god Poseidon, his great grandfather who

offered him a gift from the sea. A sacred white bull majestically arose out of the ocean and Minos promised to return it to the god in sacrifice. However, the bull was so regal and powerful, Minos decided not to sacrifice the majestic bull but substitute it for a prized white bull from his own herd. Outraged at the deceit, the earth-shaker Poseidon cursed the Minoan dynasty provoking Pasiphaë, Minos' wife, to be sexually obsessed with the beautiful god-like bull. Her craving led to her becoming pregnant with her monstrous son, the Minotaur. Minos' greed and failure to respect the laws of the gods produced a monster that had to be buried beneath the surface of the family in the labyrinthine dungeons of the palace. Buried shame or repression lurking under the atmosphere of the family home eventually surfaces through the next generations. This became evident through the fate of Europa's granddaughters daughters Ariadne and Phaedra. The myth the Greeks retold was a variant of a much earlier motif when the bull was consort of the earth goddess. Europa is the ancient goddess whose earthy instinct is powerful and resourceful. Europa heralds contact with the ancient feminine instincts that generate the power to create abundance.

Throughout the myth of Europa the bull image reoccurs. It is a multi-dimensional symbol of earthy passions, desires, magnetism, wealth and potency whose shadow is greed and lust. The Great Bull of Heaven was an image of archaic power, fertility and enterprise. The appearance of the heavenly bull of Taurus heralded spring when the bountiful Earth became carpeted with wildflowers and the cycle of courtship began. The great bull is engaging and charismatic constellating the generative power of the feminine. Aphrodite who symbolizes the beauty, sensuality and attractiveness of this archetype is the persuasive erotic power that draws Europa, Pasiphaë, Ariadne and Phaedra into her domain. Europa embodies the wealth and majesty of the bull, its earthy passions and its worldly triumphs.

Europa, as the bull-goddess, reclaims the power to construct and direct the course of her own life. When she is prominent in a birth chart it suggests the individual's present course is to construct a solid foundation that will secure the rapid growth of resources.

In astrology Europa embodies the ability to ride the bull, harness its power and give birth to its resourceful creativity. Innately she is the image of feminine power, guidance and direction. Embodying earthy instincts she knows how to cultivate the earth and create abundance through her passionate, attractive and commanding nature. How she finds expression in your life is explored through the goddess Europa's placement in your horoscope, as follows.

Europa is in the 8th House

Your life is a strange and compelling journey. Often you feel safe and secure in your associations, investments and joint ventures. However, you are also aware that life changes and you need to adapt in order to survive. You are well aware of the benefits of pooling resources with other individuals and carefully select your allies. Your resources are both emotional and physical. Therefore when you are deeply connected and involved with another person your happiness and fulfillment is mirrored in the world through ample capital and possessions. You like to spend money on beautiful possessions, ranging from small objects for daily use to investment properties. However, you also have an uncanny ability to gain through the efforts of others. You need to ensure that you do not become a burden on others. Teamwork requires that everyone pitches in. If you do your fair share then you are likely to reap great rewards through any joint ventures.

You do not wear your heart on your sleeve, as the saying goes. In fact you may do a pretty good job of covering up your deepest feelings, but your emotions are far from superficial. You are sensitive to your environment, but particularly to other people and mostly to your spouse. You love deeply, even if you do not always show your emotions. You are loyal and trusting in intimate relationships.

You are a good listener, although you are sometimes surprised by some of the things that people tell you. A colleague,

friend or family member may start to share some personal matters and then the story takes an unusual turn. This is because people feel comfortable in your presence. They trust you to keep their inner most secrets. Honoring intimacy through confidentiality, containment, privacy and trust is important in all your close relationships. First make sure that you want to be drawn into the intimacy of the other's confidence and secondly if you are, respect their confidentiality as you would your own.

You are also sensitive to the cycle of the seasons, probably preferring Spring to Winter. You may also feel a deep bond to the natural environment. Pets do not have quite the same appeal as seeing an animal in its natural habitat. Therefore, when you need to feel connected, return to a natural setting to reunite with the wellspring of your inner strength.

Europa is in Pisces

You are a water baby at heart. You love all things aquatic. This can range from enjoying a simple walk by the ocean to the urge to study marine life. Swimming, diving, and other aquatic activities are likely to appeal, calming and soothing your soul. Hence you are likely to live by the water, whether it is an ocean, lake, river, or creek. If it is not possible for you live by water then you decorate your home with water themes, perhaps even installing a pool, fountain or pond in your garden.

At some stage in your life you may fall in love with someone who lives across the seas. You may be tempted to move closer to this loved one. On the other hand once you are comfortable in your own waterside home or marine oriented profession you are unlikely to change your course for someone else. In some cases this position of the goddess Europa can indicate someone who is at the beck and call of a loved one. You need to make sure that your caring nature is not taken for granted, that you are not treated like a doormat. Stand up for your own ideals.

Water represents the intuition. Yours is strong. Generally speaking you rely on your instincts to guide many decisions, combining a rational, pragmatic approach to your intuitive intelligence. You have a strong altruistic streak, a natural inclination to save others. This can shape your life because you also have the ability to channel your ideals into practical pursuits. For instance you may become a counselor, an advocate for underprivileged or disadvantaged sections of society, a policy maker for the downtrodden or a member of a group intent on saving the planet. It is also possible that you are artistic. Whether or not you have a gift for one of the arts you are likely to be soothed by harmonious music, beautiful artwork or inspirational theater. Inspiration and ideals are important to you. As US general and politician Carl Schurz so aptly said, 'Ideals are like stars: you will not succeed in touching them with your hands, but like the seafaring man on the ocean desert of waters, you choose them as your guides, and following them, you reach your destiny.' In many ways your destiny is guided by your ideals.

Pandora - A Gift Of Hope



*'Hope sole remain'd within, nor took her flight,
Beneath the vessel's verge conceal'd from light'
Hesiod*

Pandora's story was written eight centuries before Christ in the epoch when gender roles were rigidly defined. Yet the mythic plot echoes timeless motifs, even ones used in contemporary science fiction. In Greek myth Pandora is the first woman, mother of all mortal women, created by the gods to assert their superiority over mankind. Cast as a femme fatale, a 'beautiful evil', she possesses a jar filled with toxins designed to pollute the race of mankind. Alluring, yet dangerous, Pandora represents a vestige of the ancient goddess culture threatening the emergent patriarch. Yet she also transports an indelible gift from the goddess embedded at the bottom of the urn.

Three centuries later her myth was carved on the marble base underpinning the spectacular cult statue of Athena. When designing the Parthenon and its decorations the Athenians chose the myth of Pandora to be the motif at Athena's feet. On the pedestal of the colossal statue suppliants to Athena were reminded of the creation of the first woman and the plagues she brought to bear on humanity, a striking contrast to Athena who brought victory and pride to the Greeks. Like Athena Pandora's birth was unusual. Fashioned out of the earth at the command of Zeus, Pandora was the instrument designed to punish mankind for the unsanctioned possession of fire stolen by Prometheus.

Zeus was furious when Prometheus stole fire from heaven, smuggling it in a fennel stalk and distributing it to mankind. With the theft the distance between man and god narrowed, as fire was the alchemical agent that would refine raw materials and promote the development of mankind. As the human race developed there would be less need for the gods. Zeus' revenge was to send a 'gift' to man that would counterbalance the profit mankind gained from using fire. To date men had lived without evil in a golden age, which now would come to an end through the guile of a beautiful woman.

Zeus instructed the smith-god Hephaestus to fashion a beautiful maiden resembling a goddess out of clay and water. Athena was to teach the phantom how to weave a web, Aphrodite was instructed to make her seductive and Hermes, the trickster-god, was to teach her how to be deceitful. Adorned with beautiful garments from the Charities, Zeus breathed life into Pandora, who was given as a gift to Epimetheus, the brother of Prometheus. In her hands she carried an intricately designed urn, the dowry Zeus had given her. Shut inside it was all the evils, storms and plagues that bring

misfortune to mankind. Instructed not to accept any gifts from Zeus, Epimetheus became enchanted by the beautiful Pandora and forgot his brother's warning. Pandora opened the jar and before she could close the lid disease, old age, pain, toil, death and all the other ills that plague humanity spilled out. When she was finally able to seal the jar nothing remained except Hope, trapped at the bottom. In their benevolence the gods had insured an antidote for suffering. Pandora offers hope when all else has failed.

The myth of Pandora was included in Greek literature synchronous with the time that the myth of Eve appeared in Jewish writings. In both myths Pandora and Eve become the patriarchal scapegoat for all of humanity's troubles aligning feminine power with evil. This mythic misogyny defines the time when masculine values were dominant and feminine values were denigrated, even demonised. Pandora and Eve became the composite projection of evil, blamed for their lack of foresight, chaos and feelings. Underlying the mythic stratagem was a motif from an earlier period when goddess culture was dominant.

In Greek Pandora translates into 'all gifts' and her entry into Greek myth suggested this name because the gods of Olympus each gave her a gift. However, this mythic thread is probably an inversion from earlier goddess culture when Pandora may have referred to the goddess giving gifts. Gift giving became an essential component of Greek culture and this inverted fragment reminds us of the abundant side of the goddess who offers us the cornucopia of plenty. Pandora is born of the earth like Gaia, supplying the gifts of life. And the gift of life she brings that cannot be destroyed is Hope. On a psychological level hope is the mechanism that breathes life into the soul after it has been bruised and deflated.

Pandora emerges at a critical time historically and psychologically. She enters Greek myth when the goddess culture has waned and been rejected and man is no longer in favor with the gods. Psychologically Pandora appears to offer hope in devastating times. She brings a powerful gift that cannot be destroyed by life's ills. Hope is the life force that survives the disaster evoking images of healing and improvement. When Pandora is prominent in a birth chart she confronts us to delve into the deepest part of ourselves to tap the reservoir of faith. Having survived the projections and denigration of the other, Pandora resurrects life once again through the auspices of hope.

In astrology Pandora reminds us that embedded in every disaster is the gift of renewal through the auspices of faith and hope. Illness, destruction, old age and pain are part of feminine wisdom and this knowledge stands in direct contrast to masculine fantasies of a Golden Age and Garden of Eden. How she enters our life is reflected in the placement of the goddess. Descriptions of the goddess by house and sign in your horoscope are next.

Pandora is in the 5th House

You are adventurous and romantic, the life of any party. You enjoy dressing up, acting the fool and generally having a good time. You also get great pleasure from beauty whether this is by owning one highly attractive object or surrounding yourself with good-looking people. Fine wine, good food and good company are high on your list of priorities. You may tend to concentrate too much on pleasure, rather than on substance. In fact you have been known to cast off anyone who is too serious. Always stirring up fun and adventure may put you at risk of not being able to settle down or find your unique creative voice.

Others may try to warn you, but you may not be able to easily give up the need for fun and frivolity. However, the fates may have woven their creative design in their own unique way. Your nemesis may eventually be a child. You are extremely fond of children, although you are likely to enjoy their company as a favorite aunt or uncle rather than take responsibility for a child's upbringing. Nevertheless the faith of a child, either your own or someone else's is likely to offer you hope of redemption. Through their eyes you are able to see new directions, creative freedom and hope for a different lifestyle.

Your fondness for children may also result in a vocation for teaching or mentoring. Your charismatic nature, spontaneity, and tendency to leave everything to the last minute alchemically combine into an ability to be an inspirational teacher. Your joyful approach to your own vocation arouses others to follow their own dreams. Whether your followers are young or old, you teach them the joy of childlike belief in their own talents and the greater good of this world.

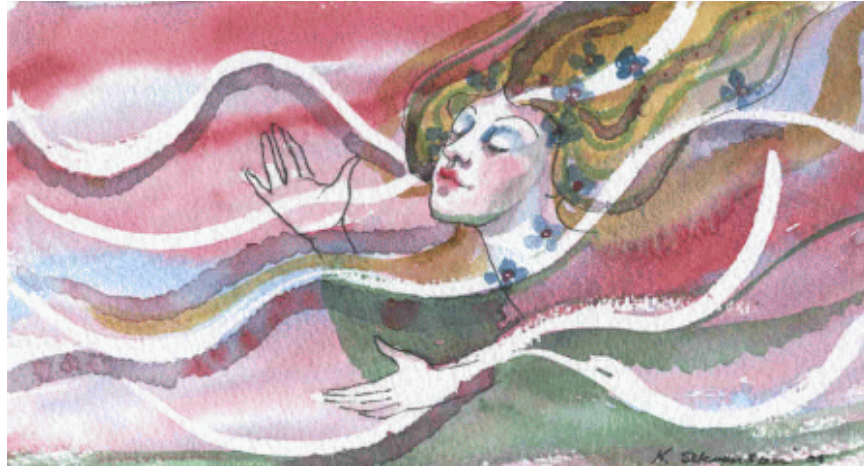
Pandora is in Capricorn

Has anyone ever told you that you have an over developed sense of responsibility? That you work too hard, worry too much or look after your family too much? All of the above? Well it is true. You are a dedicated person of integrity. You are keen to do the right thing in your private life, as well as in society. You hold down a responsible job, working hard to pay the bills and achieve a little extra. If you are married then you are likely to be a stable and loving partner, ready to support your spouse's hopes, dreams and wishes.

Compromise is your middle name! If you are single, then you are a loyal and loving friend, ready to listen to their problems and share their joys. You give regularly to charity, help out on local club committees when possible and do your share on your child's school roster. You are a model citizen. So what is the problem you ask? The problem is that you don't know when to stop. You are so busy being the perfect spouse, dedicated employee, responsible boss, all-powerful parent that you don't know when to take time out for yourself. Just the thought of being a little selfish heralds waves of guilt. You may be frightened that if you stop caring for others, even for a moment, then your achievements will come to nothing, that all will fall like a house of cards. This is not necessarily true.

If it does become a reality then your achievements were not based on a firm reality. You need to consider your own hopes and wishes occasionally. You may need to reconsider your own ambitions, the big ones such as career options and marriage proposals. However, you do not necessarily have to change much in your life. You may only need to consider listening to your own heart on daily matters, such as taking some time to relax and enjoy the sights and sounds of nature. You may even enjoy sitting down and watching someone else do some of the daily chores without feeling compelled to join in. Once you have achieved more balance in your life you will be amazed by your renewed sense of hope and vitality.

Mnemosyne - The Soul Of Memory



*'Thou fill'st from the wingèd chalice of the soul
Thy lamp, O Memory, fire-wingèd to its goal.
Dante Gabriel Rossetti*

The faculty of memory was so important to the ancients that it was personified as a goddess. In Greek cosmogony Mnemosyne was the daughter of Uranus and Gaia, a pre-Olympian goddess who characterized Memory. Being one of the original deities Mnemosyne is the custodian of memory before the advent of writing, literacy, books, recordings and computers. She embodies the voice of an oral culture that communicates from the soul through stories, pictures, metaphors and body language. Mnemosyne finds her voice through the poetry of images revealing her memoirs through a dream, a feeling, a response, a longing or a sudden thought that darts into consciousness. Embedded in the fragments of a song, a myth, or a fairy tale linger ancient truths that awaken the goddess. Dwelling in the soul Mnemosyne unexpectedly arouses memory through our senses and bodily reactions.

To the ancient Greeks memory was a goddess residing in the heart. Memory was soulful, an aspect of psyche that was creative and evocative and the ancients also saw the goddess as mother of the Muses. Goddess culture honored her form through three phases and originally Mnemosyne was celebrated through the Muses of meditation, memory and song. In early myth the Muses were the triune aspect of memory who inspired poetry and song. As rational science and beliefs began to emerge the seat of memory began to shift to the brain, aligning memory with a more logical and calculating experience rendering Mnemosyne a passive goddess who collected and stored life's impressions. Later myth suggested there were nine muses. Zeus visited Mnemosyne for nine nights and was the father of her nine daughters, the Muses, the inspiration and manifestation of the soul of memory. As mistresses of healing and prophecy the Muses inspired and taught others to contact a deeper knowing through their imagination and creativity which guarded the wellspring of memory. As custodians of the arts each had a sphere of influence which they inspired and animated with ancient images and recollections. History, Music, Comedy, Tragedy, Choral Dance and Song, Lyric Poetry, Religious Dance, Astronomy and Epic Poetry were the personifications of the ancient goddess of memory. Apollo, lord of the rational sphere, became their guardian and leader.

Memory's daughters are the muses, the ones who inspire and enchant the soul. Through her and her daughters we are able to engage in weaving the fragments of memory together to evoke meaning. Mnemosyne reminds us to remember the ancient ways. The goddess of Memory is not just a passive recorder of experience and events but a poetic and

heart-rending process that inspires the imagination. Mnemosyne re-collects the emotional experiences, feelings and impressions of our life. She is the archive of all that we have tasted, touched, wanted, smelt and felt. Her memories are stored in the psyche as images, symbols, feelings, impressions and instincts or become imprinted in the body, in the adrenal or olfactory glands, the tension in the muscles, allergies and illnesses. Mnemosyne is rhythmic and reflective, not linear, evoking dreams, images, songs that give continuity to our life's narrative. Memory and imagination are woven together when Mnemosyne and her daughters are aroused.

To the ancients the sacred sanctuary of Mnemosyne and the Muses was the museum. These ancient shrines dedicated to the goddess ceded to the structures we know today as museums where we house the great works of the imagination. On an inner level the museum is the sphere of Mnemosyne where impressions and feelings from the past are evoked in the present situation.

In astrology Mnemosyne, the goddess, helps us remember images and impressions from previous phases of our life in order to give meaning, context and insight into these experiences. She acts as a loosening agent, allowing buried complexes, taboo feelings, repressed memories to breathe again to find some place in the sunlight of consciousness. She connects passages of time together. Links can be made back to times in the previous cycle allowing space for the process of reflection and musing. Following is a report of how Mnemosyne brings the muse into your life experience.

Mnemosyne is in the 8th House

You are a prophet. This can be as simple as having the foresight to see the consequences of other people's actions or as miraculous as having the gift of clairvoyance. The extent of your gifts depends on other aspects of your birth chart, but you are gifted in the 'invisible' arts. Psychology, prayer, meditation, alchemy, magic, astrology, divination, criminology, and stock market trading are just some of the areas of interest that may spring from your talent for foretelling the future. This talent of yours actually stems from deep within. This could perhaps be your own childhood experience, but it is more likely that you were born wise. You may or may not consciously remember life before your birth, but some well of knowledge seems to dwell within, enabling you to draw on an innate wisdom.

Your talents may not be appreciated within your immediate family or circle of friends. As a child you are likely to be the one who states an honest fact only to find out that the adults would rather that you had kept quiet. As you mature you are quick to recall the discomfort and learn to keep some of your observations quieter than you would otherwise like. Nevertheless there are times when you are asked for advice and your gift for telling the truth and predicting future trends is not always appreciated. As Matthew says in the Bible, 'a prophet is not without honor, save in his own country, and in his own house'. You may have to travel further a field than your own family, or hometown, before being truly appreciated as a gifted teacher, preacher or prophet. As mistresses of healing and prophecy the Muses inspired and taught others to contact a deeper knowing through their imagination and creativity which guarded the wellspring of memory. You may choose to teach metaphysical matters, work as a psychologist, start your own business or earn your money through stock or property investment. You enjoy stepping into the unknown, because for you very little is unknown. You follow your instincts.

You are also happy to share your knowledge with your marriage and business partners, as long as these important people are trustworthy and treat you with respect. If you feel that you are being used, taken advantage of, then you are likely to leave, taking as many resources with you as possible. You have a long memory when it comes to betrayal and need to be careful that you don't try to exact revenge. Although you are gifted at foretelling other people's lives, and the consequences of their actions, you may not be able to counsel yourself in the middle of intense emotional situations. Prayer and meditation can be highly beneficial during transformational moments such as separation, divorce, legal matters, birth and death. You are likely to be a very understanding counselor, listening and remembering details of other

people's stories. However, you also need to remain open to joyful experiences. You may need to rely on your memory of pleasurable moments in order to help yourself, and others, through the portals of change. Your own experiences deepen your ability to empathize with others. This remains the goddess Mnemosyne's calling to you - to teach others intimacy, by facing the depths of sadness as well as the heights of joy.

Mnemosyne is in Pisces

You are a muse, an artistic and poetic person with a vivid imagination. It is so important for you to find an artistic outlet for your creative vision. The goddess Mnemosyne finds her voice through the poetry of images revealing her memoirs through a dream, a feeling, a response, a longing or a sudden thought that darts into consciousness. Embedded in the fragments of a song, a myth, or a fairy tale linger ancient truths that awaken the goddess. The goddess of Memory is not just a passive recorder of experience and events but a poetic and heart-rending process that inspires the imagination. Mnemosyne re-collects the emotional experiences, feelings and impressions of our life. All of these things she asks of you.

Perhaps you feel this yearning? Or perhaps you have buried it deep under the responsibilities of daily life? Your soul longs for expression. You must find time to express your truth, your imagination, even if only in a daily journal that you tuck under your bed. If you do not follow your heart's desires then you could feel lost, like a wanderer trying to find a safe haven. You are a gentle soul and prone to depression if your life lacks meaning. If you start to feel despondent then you need to rediscover your creative spark through spiritual or artistic means. Tell your friends about your dreams, read about other people's epic journeys, inspire yourself with beautiful artwork or watch an inspiration film. Do whatever you can to discover the wellspring of artistic talent that yearns to be free. You can express yourself through music, art, poetry, film, theater, or any form of writing. If you tune into your intuition then ideas and words will flow.

Your artistic nature and works are likely to bring joy to all who come into contact. Of all of the signs of the zodiac the goddess Mnemosyne is the most poetic in Pisces. Poetry is likely to speak to your heart. You can read other people's poetry, listen to the poetic words of songs, attend poetry readings or write your own. As English poet John Masefield wrote, 'since the printing press came into being, poetry has ceased to be the delight of the whole community of man; it has become the amusement and delight of the few.' A Poet Laureate, John Masefield was known, amongst other things, as the poet who wrote about the sea. A love of the ocean is likely to feature largely in your own life. You may spend many a moment daydreaming while soaking up the sun, smelling the salt water and feeling the wind. You recognize the importance of valuing the sacred moments in daily life, the importance of myth and magic. The goddess Mnemosyne is urging you to express these values so that you, and those who come into contact with you, can experience joy and peace.

Hecate - The Soul In Transition



*'Leave those vain moralists, my friend, and return to the depth of your soul:
that is where you will always rediscover the source of the sacred fire
which so often inflamed us with love of the sublime virtues;
that is where you will see the eternal image of true beauty,
the contemplation of which inspires us with a holy enthusiasm.'*
Anthony Robbins

Hecate became associated with the dark phase of triple goddess who embraced the spheres of heaven (Selene), earth (Artemis) and underworld (Persephone). Her initial association with the underworld was as an attendant to Persephone. It was Hecate who heard Persephone's screams when Hades dragged her down into the netherworld. Hecate was also present when Hermes escorted Persephone out of the underworld. As a guardian of the threshold Hecate witnessed Persephone's descent and release. Her cave is located between the earth and the underworld confirming Hecate's role as an intermediary, bound to neither world but in between both.

As a threshold goddess Hecate is encountered when the paths of our lives converge and we are uncertain which fork in the road to follow. Throughout antiquity she was worshipped at the intersection of roads and by Roman times she was known as Hecate Trivia, the goddess of the three ways. On the night of the New Moon pots of food were left at the crossroads as votive offerings to the goddess. 'Hecate's suppers' honored the transition of one lunar cycle to the next on the night that the old month ended. Statues with three bodies and three heads were erected at crossroads for travelers to leave offerings and say prayers to Hecate for guidance across an important threshold.

At transitional spaces where paths converged travelers would pass from one world into another, therefore crossroads became associated with spirits and shades. Hecate became aligned with ghosts and hallucinations as the ancient Greeks attributed the power to conjure up the dead and the phantoms of the imagination with her. Known as the leader of souls she was associated with magic, divination and contact with the shades of the dead. By the classical period Hecate had become affiliated with witchcraft and magic, known as the goddess of ghosts and night terrors. Her companions were dogs. As guardians of thresholds and instinctually able to trace a scent hounds represented Hecate's instinctual wisdom. By later antiquity Hecate had become the patroness of witchcraft.

Hecate's triple aspect was also reflected in the phases of the Moon. As 'Mistress of the Moon' Hecate governed its

dark phase. Sappho called her the 'Queen of the Night' and as a light bearer she often carried two torches. Knowing the wisdom of cycles and their triune phases of birth, death and rebirth the lunar goddess also represented the menstrual crossroads in a woman's life cycle. As a birth goddess she was an intermediary figure not only for souls departing their body but also for souls entering a new one. Hecate appears at the threshold of change in women's lives as she enters a new phase of the life cycle. As a lunar goddess associated with fertility rites she is aware of the richness of the dark and hidden treasures. In her dual role as guardian of the threshold and Queen of the Night she knows that every decision taken at the crossroads must come from a deeper level of soul.

Since her early depiction in epic Hecate has become denigrated, often portrayed as a negative and a dangerous demon of the dark. Disassociated from the totality of the lunar cycle she has become identified only with its dark phase. Fear of the dark, death and the underworld were projected onto Hecate who represented the dismembered connection to the feminine wisdom of cycles. Her ancient myth reminds us of her perpetual role as an intermediary and attendant at the crossroads. We meet her on the precipice of change, at crossroads, on doorways, in transition. During these times of initiation Hecate helps us to accept our disorientation between two ways of being.

When the goddess Hecate is prominent in a birth chart she depicts the area in which we are at crossroads in our lives. Time can sometimes seem suspended while we reorient ourselves to a new way of being. Confusion, loss and disconnection are natural moods during this phase as we let go of what has been in order to greet what may be. By house position Hecate would suggest where you will encounter her in your life; by sign she colors your life with magic and mystery. Following are the astrological descriptions where Hecate enters your experience.

Hecate is in the 1st House

Can you recall the witch Samantha in the television series or film called 'Bewitched'? This colorful character is able to manipulate her world and the people in it with a blend of charm and a little magic. You are able to do the same. In this sense you are a powerful person, making an impact on your environment. The goddess Hecate is well known for her influence on witchcraft, but she is more than a witch. She is a very powerful goddess, the only Titan to be accepted into the Olympian reign. You are also a very powerful person, whether you realize it or not. Other people respond to you at a very deep level.

You are healthy, perhaps with the help of herbal medicine and good exercise. Nevertheless, unless other influences in your birth indicate poor physical health, you are sturdy, vibrant and energetic. You are well able to physically accomplish all of your personal life goals. The goddess Hecate in this sphere of your birth chart also indicates that you are well able to emotionally, mentally and spiritually achieve your life purpose. You are one of those lucky people who seem to spread a little magic wherever you go. You may gather a flock of friends, relatives and colleagues who want to benefit from your protection. On the other hand your friends, relatives and colleagues may want to protect you from your constant need to look after the outcasts of society. You have a great capacity for love and compassion, wanting to look after the victims of society.

Partially your power lies in the fact that you can tune into spiritual realms while also holding a position of authority in human society. At times you may feel overwhelmed by the responsibility that you feel towards those less fortunate than yourself. You may be somewhat reclusive or contemplative, but not for long, because you know that you have a job to do. Whenever you are at a crossroads, you know the importance of pausing to contemplate the next turn, but you also know it is imperative to make a choice and keep moving. You are active, not passive, in all that you do. You make an impact on the world around you. The goddess Hecate is urging you to keep your own self-esteem intact and to make a positive impact.

Hecate is in Leo

You are larger than life, a veritable tour de force in your chosen field. The powerful goddess Hecate in the sign of Leo combines the potency of the Moon and the Sun. Therefore you have the Sun, Moon and stars at your disposal. You need only be wary of becoming too self-centered. You need to remain focused on this goddess' calling - finding an outlet for your many talents, a passion that does not feed your ego but does assist other people. As US author Henry Miller once said, 'develop interest in life as you see it; in people, things, literature, music - the world is so rich, simply throbbing with rich treasures, beautiful souls and interesting people. Forget yourself.' In losing yourself in your creative pursuits you find your identity.

How many people have playfully called you a saint or a scoundrel? That's because you know the importance of levity. It is almost as if you feel compelled to make jokes in serious moments. You are irreverent. You understand the importance of making life-changing decisions, of reaching crossroads in life that demand serious consideration, but you also know that people can get bogged down and this is not helpful. Sometimes you may go too far in your attempts to be funny and entertaining, and other people may not appreciate your jokes. Nevertheless your irrepressible joy is contagious, uplifting even the most downtrodden acquaintance. You believe that laughter is the best medicine, even in a crisis and may become a comic actor, stand-up comic or writer of funny stories. Your aim is to help people through troubled times by lightening their load. Hence some people may claim that you are a saint and some may state that you are a scoundrel who doesn't understand their true pain. But you do.

You are also likely to understand the inspirational role of the arts in human society. You know that opera, theater, music, dance, art and poetry can all help people through difficult transitory times. You are likely to have an artistic passion that needs to be expressed in your life, whether professionally or as a hobby. You need a vehicle through which you can understand your own emotional undercurrents. Whenever you are at a crossroads in your own life you can come to a better idea of which path to take by following your heart, finding a creative outlet and expressing yourself. Too many responsibilities are likely to weigh heavily on your soul. You may also be a night owl, preferring like Hecate to travel at night. The excitement of the city night-lights may be irresistible, luring you out to nightclubs, theater venues and other such attractions. You love the glitter and glamour, but are you also aware of your own spiritual nature. The goddess Hecate is urging to find meaning in your life, something that inspires you and uplifts others. Innately she is your special talent or creative flair that you discover when you are at a crossroads in your life.

Cassandra - The Prophetic Soul



'And though I have the gift of prophecy, and understand all mysteries and all knowledge, and though I have all faith, so that I could remove mountains, but have not love, I am nothing.'
I Corinthians 13:2, Bible

Cassandra stood on the walls of Troy and watched Paris' ship enter the harbor. Her brother had returned from Sparta having seduced Helen away from her homeland to bring her to live in Troy as his wife. With the blessings of Aphrodite Paris and his lover Helen had snuck away from her palace undetected and sailed across the Aegean to Asia Minor. A dark cloud shrouded the ship as it anchored. When Cassandra watched her brother and Helen disembark and approach the city gates she was flooded with images of Troy's destruction, filling her with an ominous and terrible feeling. Possessed by this eerie perception she uttered a warning to the crowd that was gathered at the gates to welcome the couple. From deep inside she divined the future: Helen's entrance into the city would lead to its destruction. Ignoring Cassandra and her prophecy the crowds turned away to welcome the new royal couple into their city. Time and time again her message was rejected and ridiculed. Ten years later a similar scenario would unfold. Cassandra would warn the Trojans not to accept the wooden horse into their city. Once again no one would heed her accurate predictions. The Greeks, angry at Helen's abduction, sacked Troy and left the city in ashes.

Cassandra was one of the daughters of the royal family of Troy, a sister to both Paris and Hector and twinned to her brother, Helenus. When the twins were infants they accompanied their parents to the temple of Apollo to celebrate a festival in honor of the oracular god. During the ritual the twins fell into a deep sleep. Two temple snakes slithered into their basket as they slept and bit them on their ears injecting the gift (or poison) of prophecy into them. From that day both Cassandra and Helenus were known for their prophetic nature.

Having the gift of sight Cassandra entered the temple to serve Apollo being called to her vocation as his Pythia, the voice of the oracular god. However, Apollo fell in love with her and demanded she reciprocate his desire. But Cassandra refused to consummate the relationship preferring to worship the god in spirit, not body. Enraged Apollo found a way to avenge her rejection. Knowing he could not retract the gift of prophecy that he had given her when she was so young he cursed her so no one would ever believe her prophecies. The god begged her for one kiss and Cassandra consented. As she opened her mouth to kiss the god Apollo breathed his curse into her insuring others would no longer value her prophetic vision. He turned his back on her, condemning Cassandra to see the perilous future yet never able to be understood or believed. Cassandra, cursed by the narcissistic god for rejecting him, was later

violently assaulted by Ajax upon the altar of Athena when the Greeks were ransacking Troy. After the sack of Troy the leader of the Greek fleet Agamemnon took her as his slave back to his palace of Mycenae. As she approached the mammoth walled city her images of destruction became more and more intense. Racked by the violent visions she screamed a warning for Agamemnon to not enter the palace foreseeing his brutal murder at the hands of his wife. In her heart she also knew that entering the city with him would result in her own death.

Cassandra personifies the medial woman whose intuitive faculties and understanding of the unconscious patterns are not welcomed in an ordered rational society. She sees what others are too fearful to see and exposes the inevitable patterns that underpin the situation. In an atmosphere of control and denial Cassandra is marginalized and demeaned becoming the projective reflection of the fear of chaos and uncertainty. Disbelief and ignorance render her wisdom impotent. When dark feelings, dread or grief are repressed in the atmosphere Cassandra is the medium of their expression. Her curse is that she is not identified with her feelings leaving her misunderstood and marginalized. Her feelings, identified by others as autonomous ravings, isolate her. Cassandra is able to sense what is taboo and unlive but unable to remain separate from it.

Cassandra represents the archetype of medial knowledge. Unlike the ancient world there are no longer sanctuaries or sacred places to honor her way of knowing. She reflects the need to be aware of our medial skills and intuitive knowledge and seek training to help strengthen the ability to use this skill and not be overwhelmed by it. When Cassandra appears prominently she encourages the individual to find a voice for the medium through understanding the symbols, images, signs and omens of unconscious language. She embodies the ancient ways of knowing in a culture that no longer values prophecy and divination. Her knowledge is not objective but oracular. To embrace Cassandra we must abandon logic, separateness and rationality and enter into the irrational world where meaning is revealed through feeling and connectedness. However, Cassandra reminds us that in a scientific and ordered society our knowing may be rejected. Cassandra encourages us to have the strength of our convictions and a strong and healthy identity about our beliefs.

Oracular knowing springs out of the collective through an unconscious and unbound participation with everything in the environment. When boundaries are blurred and the veil between the worlds is lifted we enter into a participation mystique with the spirits of the world beyond us and may be called to act as a vessel for their message. Cassandra in your horoscope reveals where you are sensitive to the pattern of the goddess. Following are the placements of Cassandra in your horoscope by house and sign.

Cassandra is in the 12th House

You have the ability to see far beneath the superficial aspects of life. You are wise beyond your years, able to analyze and understand everyday matters as well as highly spiritual ones. You are able to foretell the outcomes of societal trends, as well as personal ones. On a personal level others often seek your counsel, advice and support. This is because you are often able to predict what will happen to them, who will win the football match, even on what horses to place a bet. You may choose a professional that requires your gifts of personal and collective insights, such as social work, counseling, politics, policy making, stock-market trading and economics.

The goddess Cassandra was both gifted and cursed. At times you realize that your insights can be a curse. Sometimes your loved ones refuse to heed your well-meant advice. You can see the consequences of the actions of those close to you long before they can, but you can't control the way they choose to react. Sometimes you feel like you are simply sitting to one side and waiting for a train wreck to happen. This is true both for personal and societal matters.

In a woman's chart it is possible that an influential man will challenge your beliefs at a very deep level. In a man's chart it

is likely that you will attract a wise woman who helps you understand the deeper meanings in life. Either way you are challenged to develop the spiritual side of your life in a way that enhances your own or other's journeys.

Cassandra is in Cancer

You are a sensitive person, particularly empathetic with your loved ones. You are deeply concerned with suffering, both those close to you and the suffering of humanity. You are keen to encourage your family members and enjoy discussing all manner of subjects with those who you care for. However, you also hold strong opinions about the importance of family, the role of families in society and the need for humanity to view itself as one big dynasty. Sometimes you may be a bit too forthright in these opinions. Others may tire of your didactic ways, misunderstanding your caring for morality. You have an understanding nature; however, you may sometimes feel unable to offer any words of comfort to those in trouble. Words are not enough. You need to find an outlet for your sensitivity. Charity work, counseling, policy making for the underprivileged and speaking up on behalf of those in need can all provide relief. Through these means you are able to fully express your inherit wisdom.

The family, and the history of your family, also plays an important role in your life. Stories of family members, both past and present, are inspiring. You may enjoy tracing the lineage of your own family, perhaps even keeping a written record. You may be the voice of the family through speaking up for others or suggesting what needs to be done. On a collective level you are a spokesperson for family values and traditions.

In a woman's chart Cassandra indicates that you are a powerful and empathetic woman with the ability to speak from the heart destined to be a powerful influence on those she cares for. You may have inherited a particular talent from your ancestors, one that involves communicating - acting, writing, singing, dancing, story telling, or foretelling the future. On the other hand you may be particularly knowledgeable in a certain subject, inheriting your good judgment from a family member.

The goddess Cassandra in the sign of Cancer in a man's chart means that you are able to attract a wise and nurturing woman, who provides a strong support. This is most probably because you had a prophetic and visionary mother who fiercely protected her and your rights to speak up and say what you believed to be true. You are well advised to respect the power of the feminine arts.

Medea - Herbalist And Healer



'Of all things upon earth that bleed and grow, A herb most bruised is woman'
Euripes, Medea

Medea, a princess of Colchis, was known as the 'wise one' for her skill of healing and proficiency at using drugs and herbs. Colchis, which gives its name to Colchicum, the meadow saffron, was a kingdom on the Eastern shores of the Black Sea, considered a foreign, barbaric land through the eyes of a civilized Greece. Medea's ancestors were linked to both the sun and healing long before Apollo became the god associated with these realms. Helios, Medea's grandfather, was the Sun god of the old order, born a Titan's son. Her aunt Circe was a sorceress, a magician, herbalist and healer who knew the ancient ways of plants and spices and how to cast spells. Circe had trained Medea as a young woman in the arts of sorcery, magic and herbalism, teaching her how to mix potions, direct spells and rearrange matter. Medea was also a priestess in the temple of Hecate, honoring the goddess of the dark night and magic. Hecate guided her instincts. As a medical intuitive she knew the magical properties of herbs, the appropriate plants for healing, homeopathic tinctures and the process of preparing and administering these remedies in her caldron. As the surrogate of Hecate Medea knew the timing of the lunar cycle and how to draw down the moon when ritual and ceremony was needed.

However, Medea was unable to withstand the unholy alliance of the goddesses Hera and Athena who petitioned Aphrodite to conspire with them and cause the princess to fall in love with Jason. Medea became enchanted by Eros and fell in love with the Greek hero, who had come to Colchis to retrieve the Golden Fleece. Medea helped Jason achieve this impossible task with the help of special ointments, incantations and timing. Medea enabled Jason, her heroic/lover, to succeed at the trials set before him but in helping Jason be successful Medea had to betray her family and flee her homeland.

On their flight from Colchis Medea visited her aunt Circe who absolved her of her betrayal and eventually Medea arrived at Jason's birthplace, at the foot of Mount Pelion in Thessaly. When she arrived in her new homeland Medea used her great skill at the arts of magic and herbs to rejuvenate Jason's father but also used her sorcery to trick the king's daughters into unintentionally killing their father. To prepare for this procedure Medea disappeared for nine days collecting the special drugs and herbs that she needed. As the Moon swelled she gave sacrifices to her goddess Hecate, then used drugs to help Aeson, Jason's father, fall into a deep sleep. She then cut his throat to let the old blood run out, dismembered him, putting the pieces in a caldron with the liquid herbs she had prepared. Jason's father emerged from

the caldron rejuvenated, forty years younger. Medea's spell captured the daughters of Pelias, the wicked uncle of Jason who had usurped his rightful claim to the throne. The daughters also wished to rejuvenate their father and Medea said she would perform the task again. The daughters prepared their father by dismembering him; however, this time Medea did not put the herbs in the caldron and their father never emerged.

Having been responsible for the murder of the king Medea and Jason once again were forced to escape. While fleeing Medea's herbal bag broke open, spilling her drugs seeding the plains of Thessaly with an abundance of healing and magical herbs. As the first sorceress to perform rituals in Thessaly Medea is the seminal figure behind the region being known as 'the land of the witches'. Her myth intimates that she introduced woman's herbal knowledge from Asia Minor into Greece.

In later myth Medea is usually remembered, not as the skilled healer, but as a revengeful and spurned partner, a woman caught in the grip of jealousy for which she had no antidote. By the classical period the playwrights depict Medea consumed with rage, murdering her own children to avenge Jason's infidelity. However, Medea is more a reminder of the great respect and knowledge of healing, herbs and magic that was brought to the West and then subtly ignored and eventually demonized. Underpinning the myth are fragments of an older tradition. Jason's name means 'healer' and his partnership with Medea complements the old ways of healing before the emergence of rational medicine and the demonization of magic.

As botany evolved away from gathering herbs and digging roots of the pastoral communities to empirical and detailed research, purification ceremonies and the use of herbs became replaced by manmade drugs and prescriptions. The connections to the more instinctual, earthy and natural ways of healing were left behind. Traces of magic, ritual healing and evoking the spirit of the disease began to disappear in the Western medical tradition. Left to carry the ancient process of magic was Medea, the embodiment of the archetypal witch. As a heroine Medea champions the feminine wisdom that intuitively knows how to cooperate with nature and her cycles. She instinctually knows the right time to perform rituals and ceremonies to evoke the healing spirits or exorcize the demons.

When Medea is prominent in a birth chart she reveals the need to explore the ancient feminine traditions of herbalism, witchcraft and magic ritual. Intuitively we know the natural cycle of the body and what it needs to be well. Medea reminds us to honor the ancient custom of relating to the plant world, the wisdom of nature and the powerful healing and transforming properties embedded in the natural world. Instinctually the witch is the impulse that draws us to remedies and potions at the right time and is the urge to create ritual and ceremony to evoke the powers of the goddess. Following are astrological account of how the force of the goddess may be revealed through your horoscope.

Medea is in the 6th House

The goddess Medea weaves her rituals into the tapestry of your life everyday through her focus on work and health. In your 6th house she is concerned about maintaining a well-balanced life and urges you to be mindful of this in the everyday tasks of life. Therefore it would be important to recognize the need for sanctuary in your daily life, which may be found through meditation, activity or involvement with practices that you're passionate about. Medea is a goddess of the ancient wisdom and a simple ritual done mindfully like throwing the runes, choosing a Tarot card, lighting incense, playing devotional music or chanting an affirmation would empower you for the day. However, Medea could also be found by remaining alert in the simple everyday tasks when attending to domestic chores, preparing meals, caring for the household pets or sorting the laundry. You can become empowered by being involved with what you're doing no matter how simple or mundane the assignment, and have the ability to find magic and meaning day after day.

Through the ages Medea has been known as a wise woman, witch and medicine woman. In a contemporary context

she embodies the spirit of healing in an everyday context. Therefore you would find it meaningful to be informed about nutrition, diet, medicinal and herbal remedies, flower essences as well as availing yourself of the abundant knowledge available on the healing power of the mind. However, the goddess in your chart also suggests that your healing abilities may be channeled through work, whether that is healing in emotional and psychological ways through social work or counseling or through the medicinal and pharmaceutical traditions. Your work as a natural healer is innate to you and whether you choose that path professionally or not you will be called upon in this capacity by your co-workers and those you share your everyday life with. They will seek you out for your natural healing qualities.

But Medea also advises you to be cognizant of your own health regimen encouraging you to be aware of your own body and its needs. You may be more sensitive to processed food and manufactured drugs than most or find your lack of tolerance to noise, smoke or any of our modern pollutants. Therefore your body will call you to seek out the remedies and potions you need to feel well and stress free in your life. Through this journey you will encounter Medea and her depth of wisdom about the natural world and the power it can bestow to improve the quality of our everyday life.

Medea is in Capricorn

No doubt Medea broke the rules. Certainly she disobeyed her father in order to forge her own path into the world. Medea in Capricorn may bring this theme into your life in a unique way. Being the sign that is most elevated in the natural wheel of the zodiac Capricorn is about the overt rules, customs and standards of society. Its path is traditional, upholding the structures and principles of the authority of the land. Archetypally Medea opposes the hierarchy and by nature is non traditional and chooses to live outside the system. Herein lies your dilemma, to be able to forge a life according to your own rule and regulations without feeling outcast and unacknowledged.

Psychologically this suggests you have an innate desire to be your own authority. This is your life vocation. To forge your own path commands nerve and spirit and an inner conviction that this is what must be done. Without this fervor to be autonomous you fall under the enchantment of everybody else's expectations and unlived lives. You need to cast a spell upon yourself not to get enchanted by the values and ideals of the world outside yourself, so you can remain true to your own persuasion.

In the Tarot Medea chooses the Major Arcana card of the Devil to remind us of the feelings of imprisonment when we are stuck in an unfulfilling job, bound to an endless cycle of despair, trapped in a loveless relationship or driven by compulsions. All arise from trying to honor the futility of control or the pointlessness of perfection. This image confronts your creative possibility of breaking loose from the chains that bind. Medea also suggests that unexpressed creative possibilities may manifest as depression and lethargy. To restore well being these creative potentialities need to be nurtured and supported. In order to break the cycle of being bound to doing the right thing and following other's rules, you need to be inspired by the belief that something exists beyond the materialistic or perfectionist reality you might be stuck in.

In medical astrology Capricorn focuses on the skeletal system of the body and especially on the knees and the hamstrings, which remind the spirit of the need for flexibility. Therefore Medea's herbs remind us of this pattern. Comfrey when used in a salve or poultice relieves the pain associated with fractures and knee reconstructions. Sarsaparilla root is helpful for relief of arthritic pain; the soul's ache when we have become too unyielding and inflexible, while wintergreen is a remedy for rheumatism. In this sign the goddess reminds us to not get caught in the rigid need for control or the futility of perfection, but to enjoy the world as it is in the moment. A ritual of time out is magic enough.

ABOUT STELLA WOODS



“I am most happy to recommend Stella Woods to anyone who is in any way interested in Astrology. Her gifts are absolutely marvellous and in sharing them, she does a great service to humanity.”

Swarupa Sridharan, CEO Om Consulting

This report is meant more of an introduction to the wonders of the asteroid goddesses rather than a complete course in its intricacies. Further studies, or a consultation with a professional astrologer, are encouraged to explore this most ancient scientific and philosophic tool. It is hoped you will discover a common thread that gently winds its way through the 12 Goddess placements in your chart, a thread that inspires you to continue to follow your dreams and discover the Goddess or God within.

Stella Woods is one of Australia’s leading astrologers with hundreds of satisfied clients and a reputation for offering practical, sensitive and insightful advice. She is also an experienced astrology teacher and counsellor, a popular radio presenter and a national magazine columnist.

Stella has been studying, reading and teaching astrology for over 20 years and is a member of the Association of Professional Astrologers and a Professional Member of the Tarot Guild of Australia. She also holds certificates in Medieval Astrology and Spiritual Group Facilitation and has studied Literary Symbolism, Kabbalah and Jungian Psychology.

To hear Stella in action, tune into her fortnightly astrology talkback segment on Melbourne’s 3RRR 102.7 FM (Wednesdays 10-11 am) or read her ‘Stargazer’ column in ‘Living Now’ magazine.

On a personal level Stella is totally passionate about astrology and tarot. Her dream is to bring these ancient teachings back to life by sharing their power and wisdom with humanity.

If you’d like to book a personal reading, order a birth chart report or join one of Stella’s astrology courses, go to www.stellastarwoman.com or contact Stella at stellaw@ozemail.com.au or tel/fax: +61 (03) 9534 5021